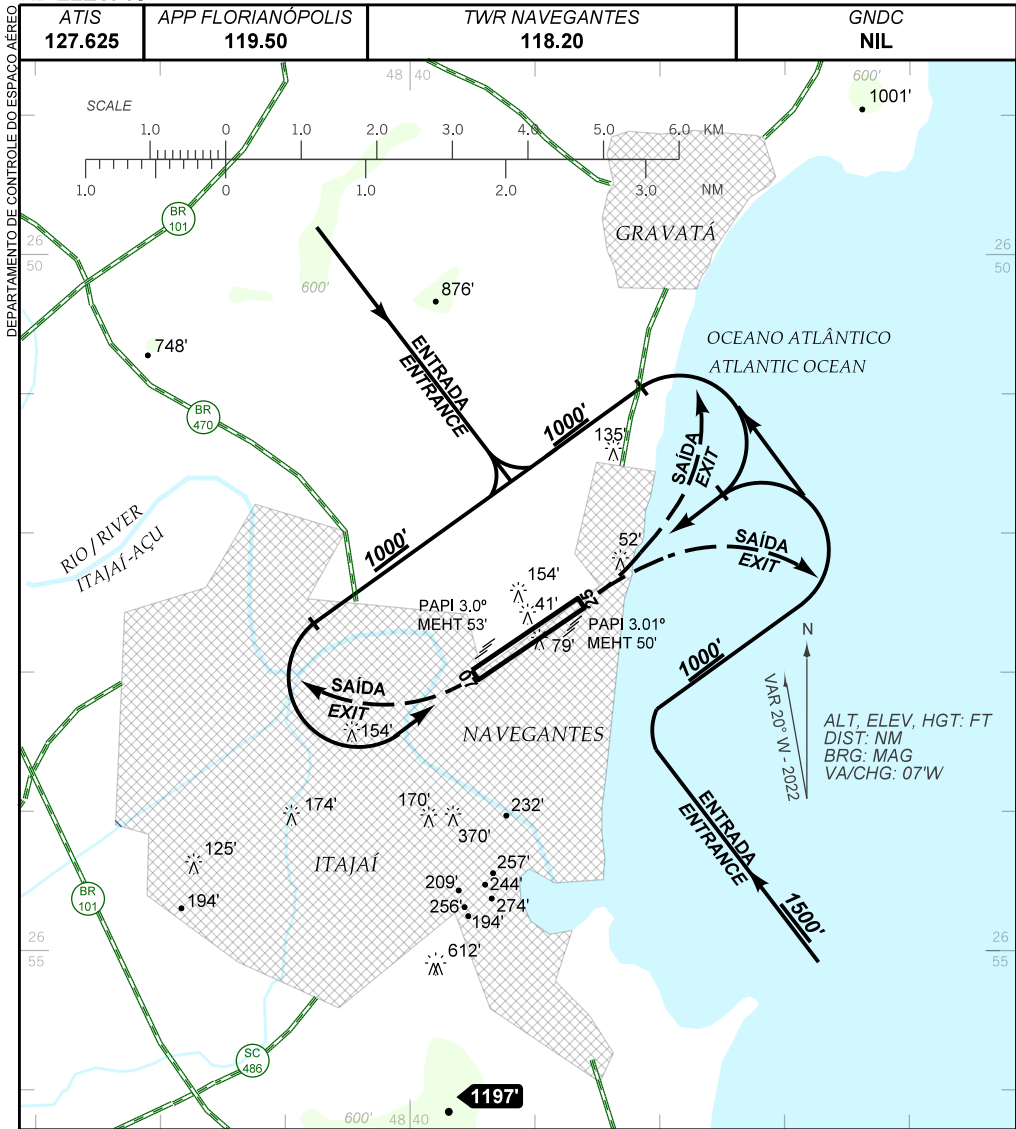


VISUAL APPROACH CHART
(VAC)

NAVEGANTES / Ministro Victor Konder, INTL (SBNF)

AD ELEV: 18'

RWY 07 / 25



RMK:

- 1- AERONAVES PROCEDENTES DO SETOR SUL/SW DEVERÃO ENTRAR NO CIRCUITO PELO PONTO MÉDIO DA PISTA 07/25.
AIRCRAFTS FROM SOUTH/SW SECTOR MUST ENTER TRAFFIC PATTERN TROUGH 07/25 RUNWAY MIDDLE POINT.
- 2- AERONAVES ENTRANDO PELO SETOR SUL/SE/SW DEVERÃO OBSERVAR GUINDASTES BALIZADOS A 1640 M DA THR 07, ELEVAÇÃO 370 FT.
AIRCRAFTS ENTERING FROM SOUTH/SE/SW SECTOR MUST OBSERVE LIGHTED TOWER CRANES AT 1640 M FROM 07 THR, ELEVATION 370 FT.

CHANGES: APP. DEC. LAYOUT. PAPI.