

INSTRUMENT APPROACH
CHART (IAC)

PONTA PORÃ / Ponta Porã, INTL (SBPP)

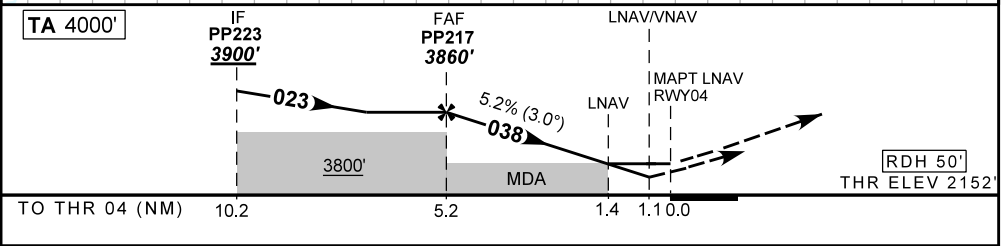
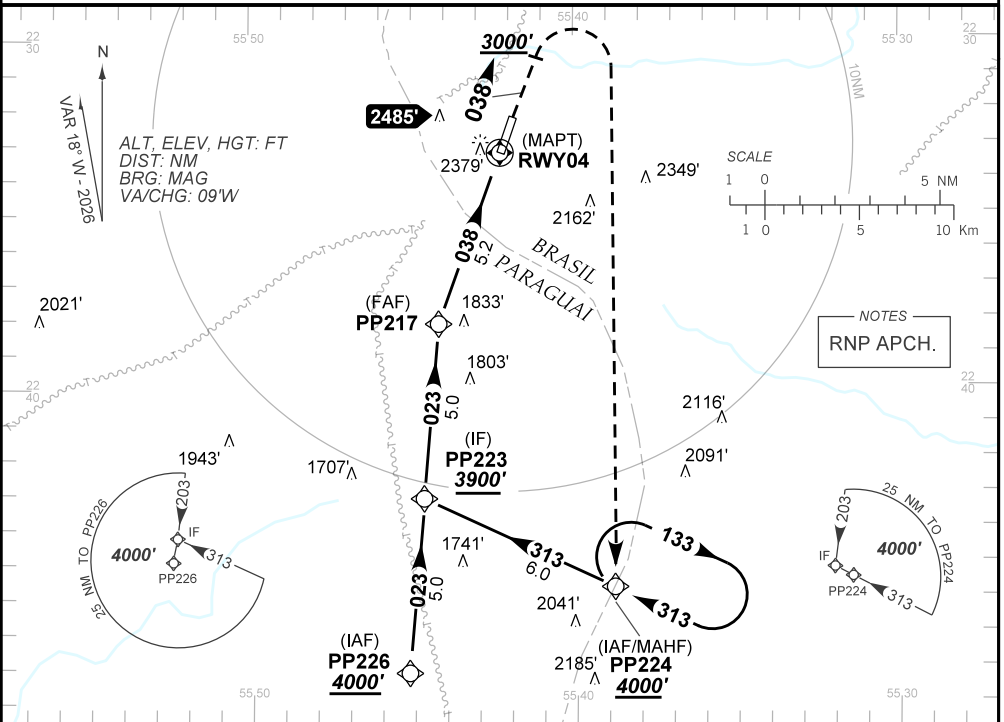
AD ELEV: 2152'

RNP RWY 04

ATIS NIL	APP NIL	AFIS PONTA PORÃ 125.90	GNDC NIL
TEMP LNAV/VNAV MIN -10°C / MAX 53°C	FINAL CRS 038°	FAF: 3860'	LNAV/VNAV DA / (OCH): 2545' / (393')
		LNAV MDA / (OCH): 2640' / (490')	

APCH Perdida: Subir para **4000'**. Manter rumo **038** até **3000'**. Após, curvar à DIREITA direto PP224 para espera.
Missed APCH: Climb to **4000'**. Maintain course **038** until **3000'**. After, turn RIGHT direct PP224 for holding.

DEPARTAMENTO DE CONTROLE DO ESPAÇO AÉREO



TA 4000'	IF PP223 3900'	FAF PP217 3860'	LNAV/VNAV	MAPT LNAV RWY04	RDH 50'	THR ELEV 2152'
TO THR 04 (NM)	10.2	5.2	1.4	1.1	0.0	

	PP217	4.0	3.0	2.0	1.4	RWY04	Ground Speed (KT)	090	110	130	150	170	190
	3860	3476	3157	2839	2640	ALT	FPM	500	600	700	800	900	NA
	1708	1324	1005	687	490	(HGT)	FAF-MAPT	NIL					

STRAIGHT-IN	CAT	A	B	C	D	E
LNAV/VNAV	DA / (OCH)	2545' / (393')				NA
	ALS/NO ALS/ RVR ALS (m)	NIL / 1800 / NIL				
LNAV	MDA / (OCH)	2640' / (490')				
	ALS/NO ALS/ RVR ALS (m)	NIL / 1800 / NIL		NIL / 2300 / NIL		
CIRCLING	MDA / (OCH)	NA				
	VIS (m)					

CHANGES: AD ELEV. PROC. THE ELEV. VAR.