

STANDARD DEPARTURE CHART
INSTRUMENT (SID)

JOINVILLE / Lauro Carneiro de Loyola (SBJV)

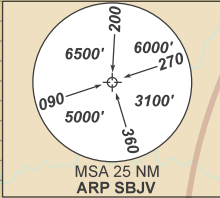
RWY 33

RNAV POXOL 1F

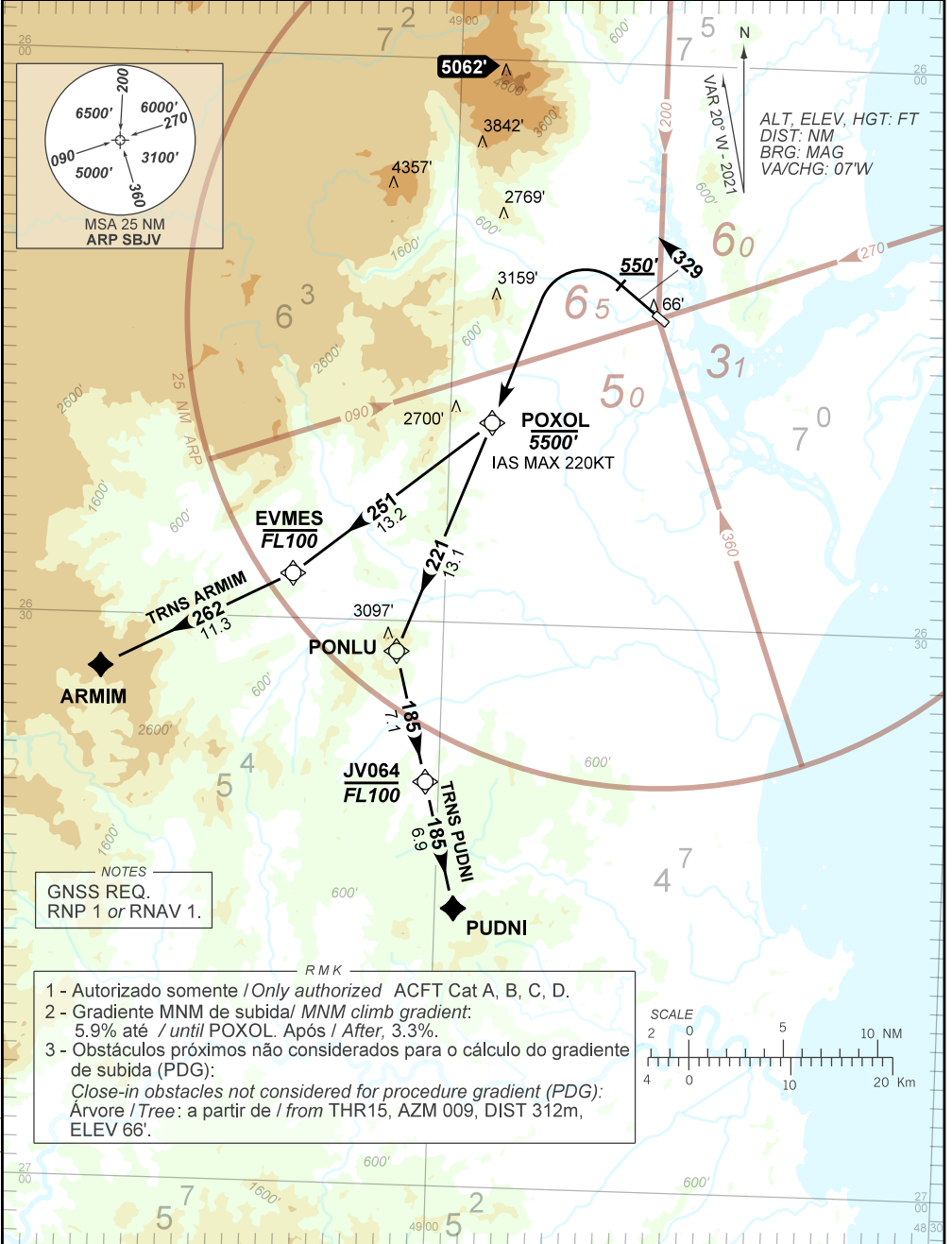
AD ELEV: 15'

TA 9000'	ATIS 127.85	TWR JOINVILLE 118.00	APP CURITIBA 119.95 119.70 120.65 120.95 129.55 133.15	ACC CURITIBA 126.10 127.50 128.45 135.85
----------	-------------	----------------------	---	---

DEPARTAMENTO DE CONTROLE DO ESPAÇO AÉREO



ALT, ELEV, HGT: FT
DIST: NM
BRG: MAG
VA/CHG: 07°W



NOTES
GNSS REQ.
RNP 1 or RNAV 1.

- R M K
- 1 - Autorizado somente / Only authorized ACFT Cat A, B, C, D.
 - 2 - Gradiente MNM de subida / MNM climb gradient: 5.9% até / until POXOL. Após / After, 3.3%.
 - 3 - Obstáculos próximos não considerados para o cálculo do gradiente de subida (PDG):
Close-in obstacles not considered for procedure gradient (PDG):
Árvore / Tree: a partir de / from THR15, AZM 009, DIST 312m, ELEV 66'.



CHANGES: AMA, ATIS, OBST, VAR.