

INSTRUMENT APPROACH
CHART (IAC)

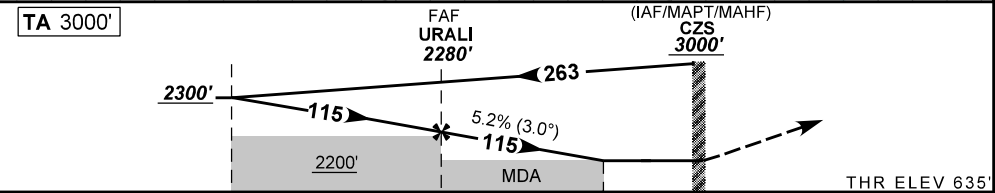
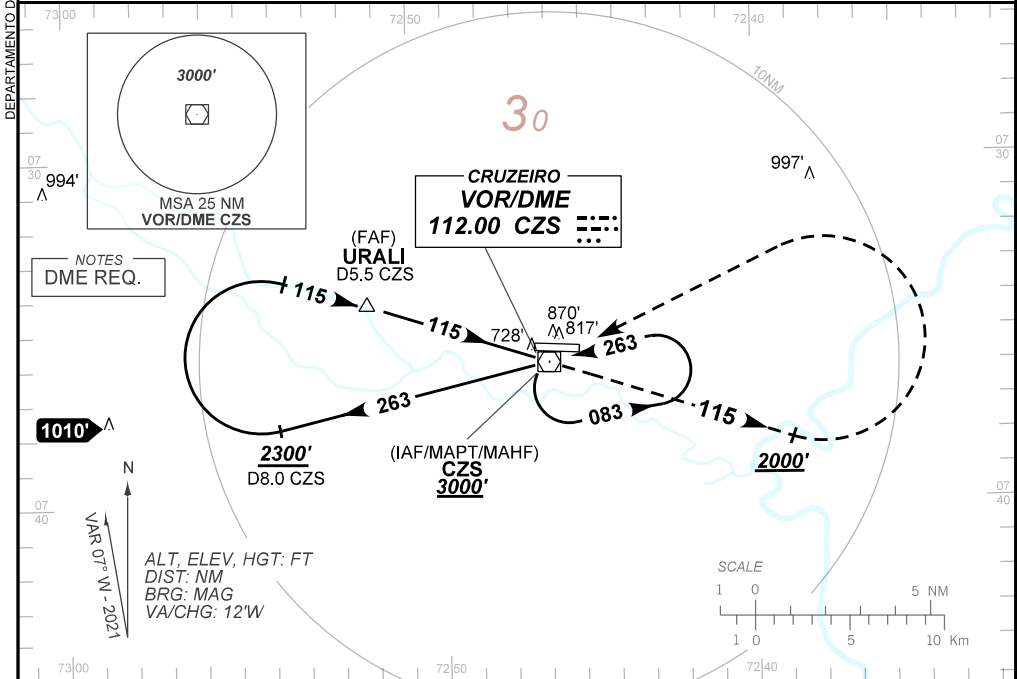
CRUZEIRO DO SUL / Cruzeiro do Sul, INTL (SBCZ)

AD ELEV: 636'

VOR RWY 10

ATIS NIL	APP NIL	AFIS CRUZEIRO 125.70	GNDC NIL
VOR CZS 112.00 MHz	FINAL CRS 115°	FAF: 2280'	VOR MDA / (OCH): 1070' / (440')

APCH Perdida: 1) Subir para **3000'**. Manter proa **115** até cruzar **2000'**. Então, curvar à ESQUERDA direto VOR CZS para espera. 2) IAS MAX 220KT
Missed APCH: 1) Climb to **3000'**. Maintain heading **115** until passing **2000'**. Then, turn LEFT direct CZS VOR for holding. 2) IAS MAX 220KT



TO THR 10 (NM)	7.5	5.0	1.2	0.0
TO CZS (NM)	8.0	5.5	1.7	0.5

	URALI	4.0	3.0	2.0	1.2	RWY10	Ground Speed (KT)	090	110	130	150	170	190
	2280	1959	1640	1322	1070	ALT	FPM	500	600	700	800	900	1000
	1645	1324	1005	687	440	(HGT)	FAF-MAPT	NA					

STRAIGHT-IN	CAT	A	B	C	D	E
	MDA / (OCH)	1070' / (440')				
VOR	ALS/NO ALS/ RVR ALS (m)	NIL / 1600 / NIL		NIL / 2000 / NIL		
CIRCLING	MDA / (OCH)	NA				
	VIS (m)					