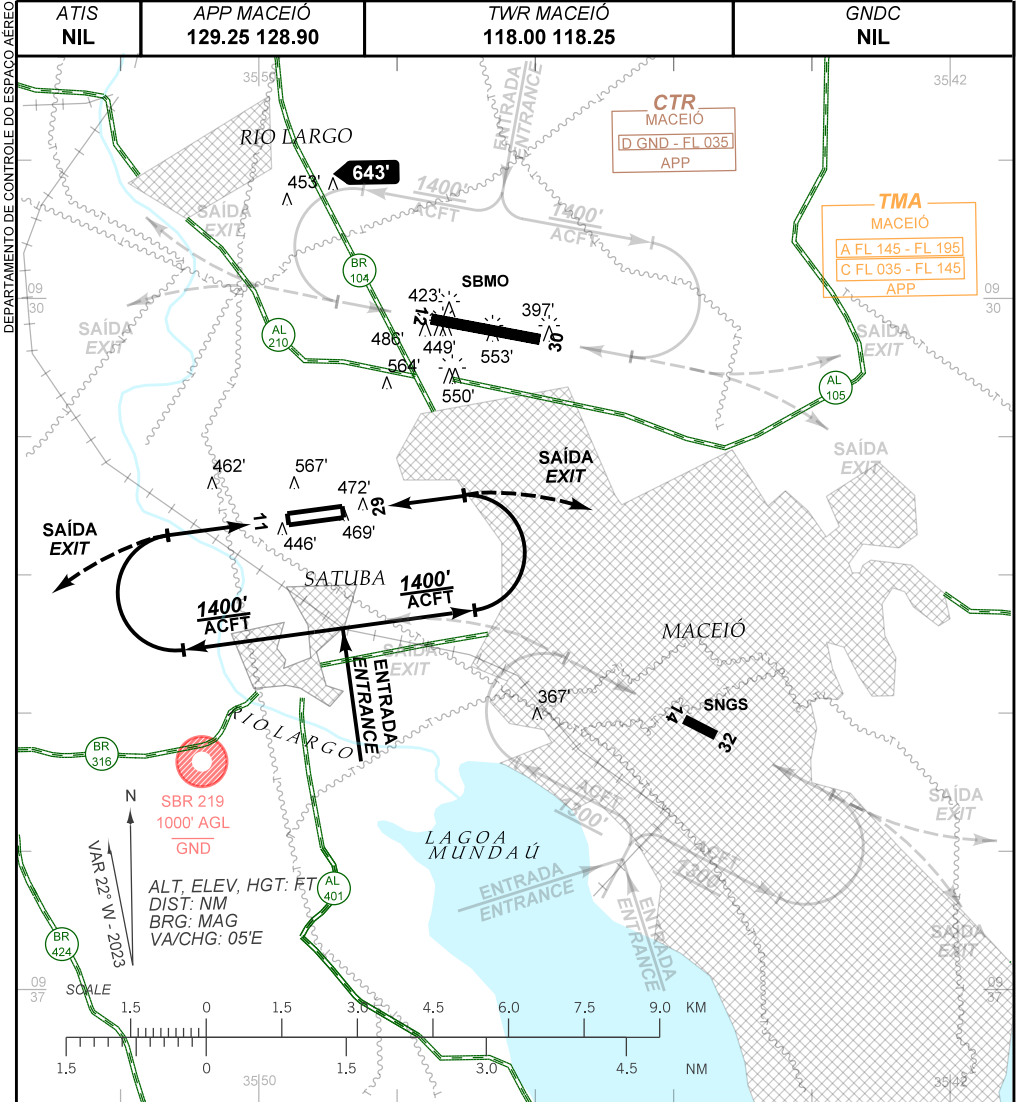


**VISUAL APPROACH CHART
(VAC)**

RIO LARGO / Manduca Leão (SNML)

AD ELEV: 404'

RWY 11 / 29



- RMK:**
- 1 - AUTORIZADO SOMENTE / ONLY AUTHORIZED ACFT CAT A, B.
 - 2 - CONTATO COMPULSÓRIO COM APP-MO ANTES DE INICIAR TKOF.
COMPULSORY CONTACT WITH APP-MO BEFORE TKOF.
 - 3 - PROIBIDO OPS ACFT SEM RÁDIO.
PROHIBITED OPS ACFT WITHOUT RADIO.
 - 4 - VELOCIDADE MAX NO CIRCUITO DE TRÁFEGO DE 120KT.
MAX SPEED AT TRAFFIC CIRCUIT 120 KT.
 - 5 - PARA POUSO EM SBMO E SNGS, VER VAC DESTES AERÓDROMOS.
FOR LANDING IN SBMO AND SNGS, SEE VAC OF THESE AERODROMES.