

INSTRUMENT APPROACH
CHART (IAC)

CORREIA PINTO / Aeroporto Regional do Planalto Serrano (SNCP)

AD ELEV: 2887'

RNP RWY 27

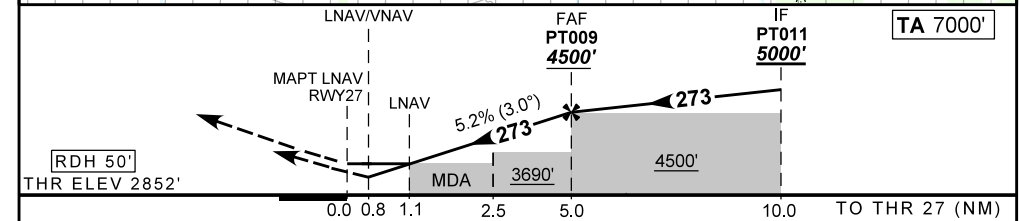
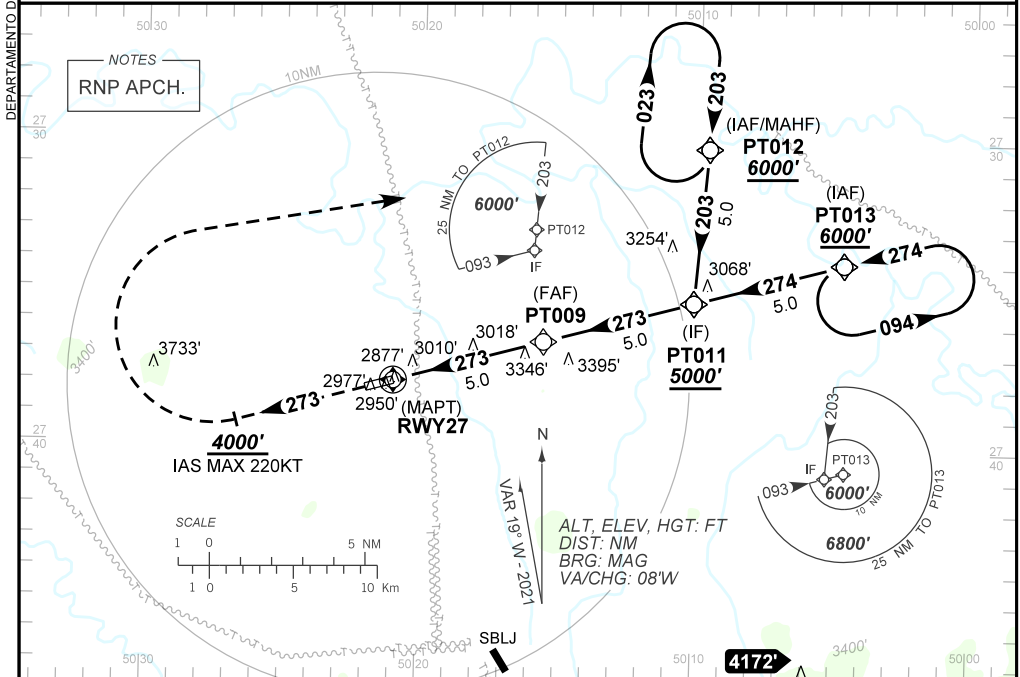
ATIS NIL	APP NIL	AFIS 131.10	GNDC NIL
-------------	------------	----------------	-------------

TEMP LNAV/VNAV MIN -10°C / MAX 45°C	FINAL CRS 273°	FAF: 4500'	LNAV/VNAV DA / (OCH): 3171' / (319)'	LNAV MDA / (OCH): 3260' / (410)'
--	-------------------	---------------	---	-------------------------------------

APCH Perdida: Subir para **6000'**. Manter proa **273** até **4000'**. Após, curvar à DIREITA direto PT012 para espera.

Missed APCH: Climb to **6000'**. Maintain heading **273** until **4000'**. After, turn RIGHT direct to PT012 for holding.

RMK: NIL.



RWY27	1.1	2.5	3.0	4.0	PT009	Ground Speed (KT)	090	110	130	150	170	190
ALT	3260	3690	3857	4176	4500	FPM	500	600	700	800	900	NIL
(HGT)	410	838	1005	1324	1648	FAF-MAPT	NIL					

STRAIGHT-IN	CAT	A	B	C	D	E	
	DA / (OCH)	3171' / (319)'					NA
LNAV/VNAV	ALS/NO ALS/ RVR ALS (m)	NIL / 1400 / NIL					
	MDA / (OCH)	3260' / (410)'					
LNAV	ALS/NO ALS/ RVR ALS (m)	NIL / 1600 / NIL			NIL / 1900 / NIL		
	CIRCLING	MDA / (OCH)	NA				
	VIS (m)						

CHANGES: NEW CHART.

DEPARTAMENTO DE CONTROLE DO ESPAÇO AÉREO