

**INSTRUMENT APPROACH
CHART (IAC)**

RIO BRANCO / Plácido de Castro, INTL (SBRB)

AD ELEV: 633'

ILS Y or LOC Y RWY 06

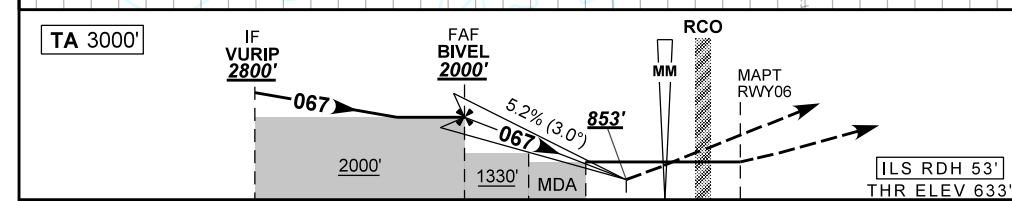
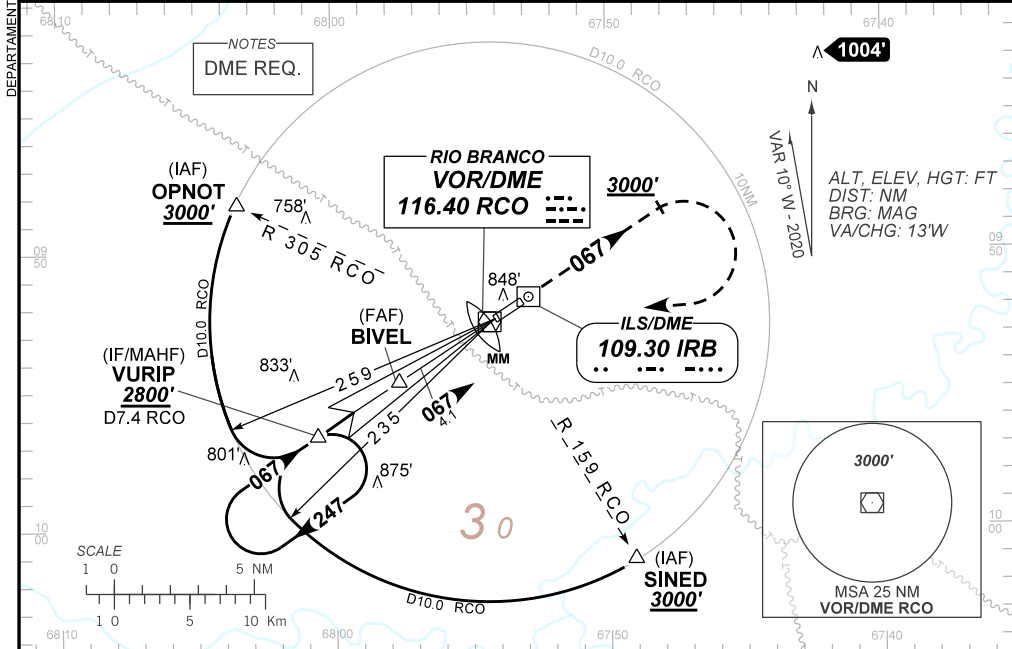
D-ATIS NIL	APP RIO BRANCO 119.90	TWR RIO BRANCO 118.70	GNDC NIL
----------------------	---------------------------------	---------------------------------	--------------------

LOC IRB 109.30 MHz	FINAL CRS 067°	FAF: 2000'	CAT I DA / (OCH): 853' / (220')	LOC MDA / (OCH): 1010' / (380')
------------------------------	--------------------------	----------------------	---	---

APCH Perdida: Subir para **4000'**. Manter rumo **067°** até **3000'**. Após, curvar à DIREITA direto VOR RCO. Após, interceptar a RDL **247°** do VOR RCO até VURIP para espera.

Missed APCH: Climb to **4000'**. Maintain course **067°** until **3000'**. After, turn RIGHT direct RCO VOR. After, intercept **247°** RDL RCO VOR until VURIP for holding.

RMK: (*)VIS RVR ALS 550m para APCH utilizando Diretor de Voo, Piloto Automático ou Head-Up Display(HUD).
(*)VIS RVR ALS 550m for APCH using a Flight Director, Autopilot or Head-Up Display (HUD).



TO THR 06 (NM)	7.6	4.1	3.2	1.0	0.7	0.5	0.2	0.0
TO IRB (DME)	9.0	5.5	4.6	2.4	2.1	1.9	1.6	1.4

	BIVEL	3.2	2.0	1.0	RWY06	Ground Speed (KT)	090	110	130	150	170	190
	2000	1702	1320	1010	ALT	FPM	500	600	700	800	900	1000
	1367	1069	687	380	(HGT)	FAF-MAPT	NA					

STRAIGHT-IN	CAT	A	B	C	D	E
CAT I	DA / (OCH)	853' / (220')				
	ALS/NO ALS/ RVR ALS (m)	800 / 1200 / 700(*)				
LOC	MDA / (OCH)	1010' / (380')				
	ALS/NO ALS/ RVR ALS (m)	800 / 1600 / 700		1000 / 1700 / 1000		
CIRCLING	MDA / (OCH)	NA				
	VIS (m)					

DEPARTAMENTO DE CONTROLE DO ESPAÇO AEREO
CHANGES: MISSED APCH. PROC.