

**INSTRUMENT APPROACH  
CHART (IAC)**

**CURITIBA / Afonso Pena, INTL (SBCT)  
RNP RWY 29**

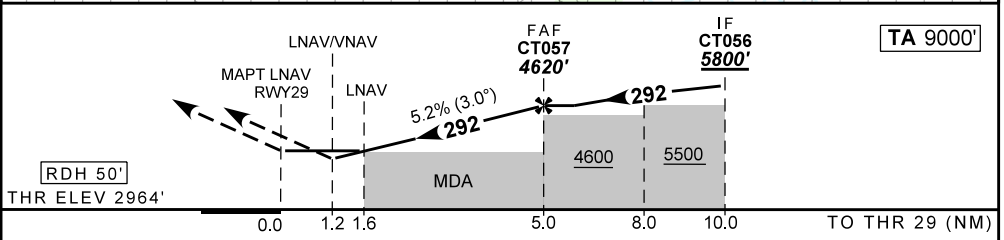
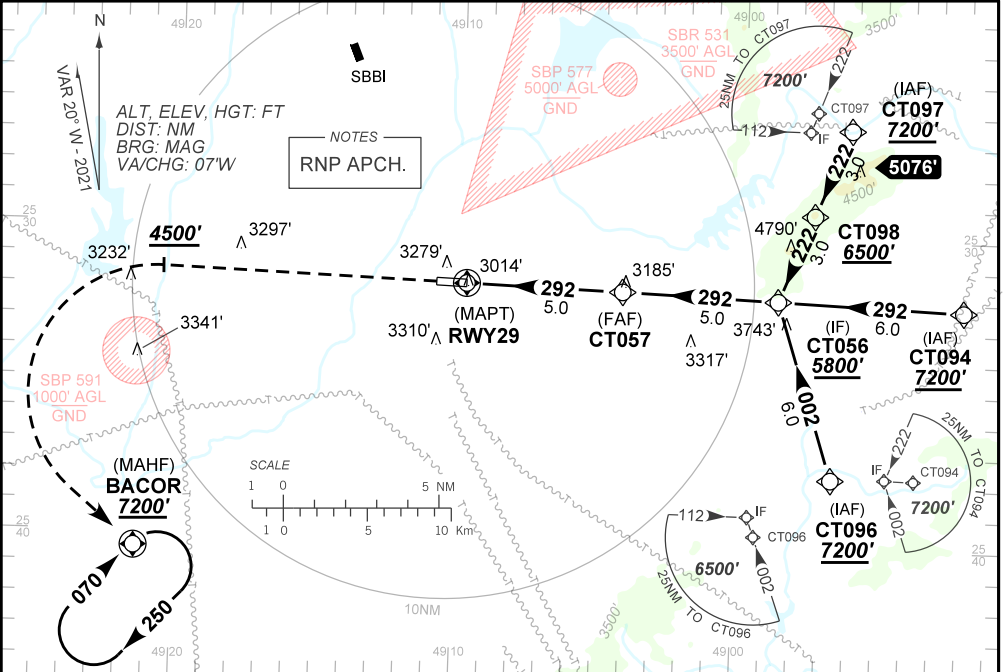
**AD ELEV: 2989'**

D-ATIS <b>127.80</b>	APP CURITIBA <b>119.95 119.70 120.65 120.95 133.15</b>		TWR CURITIBA <b>118.15</b>	GNDC CURITIBA <b>121.90</b>
TEMP LNAV/VNAV <b>MIN -10°C / MAX 55°C</b>	FINAL CRS <b>292°</b>	FAF: <b>4620'</b>	LNAV/VNAV DA / (OCH): <b>3402' / (438')</b>	LNAV MDA / (OCH): <b>3510' / (550')</b>

APCH Perdida: 1) Subir para **7200'**. Manter rumo **292** até cruzar **4500'**. Então, curvar à ESQUERDA direto BACOR para espera. 2) IAS MAX 250KT até BACOR.

Missed APCH: 1) Climb to **7200'**. Maintain course **292** until passing **4500'**. Then, turn LEFT direct to BACOR for holding. 2) IAS MAX 250KT until BACOR.

DEPARTAMENTO DE CONTROLE DO ESPAÇO AÉREO



RWY29	1.2	1.6	2.0	3.0	4.0	5.0	Ground Speed (KT)	090	110	130	150	170	190
ALT	3402	3510	3651	3969	4288	4620	FPM	500	600	700	800	900	NA
(HGT)	438	550	687	1005	1324	1656	FAF-MAPT	NA					

STRAIGHT-IN	CAT	A	B	C	D	E
	DA / (OCH)	3402' / (438')				NA
LNAV/VNAV	ALS/NO ALS/ RVR ALS (m)	NIL / 2000 / NIL				
	MDA / (OCH)	3510' / (550')				
LNAV	ALS/NO ALS/ RVR ALS (m)	NIL / 2000 / NIL		NIL / 2500 / NIL		
	MDA / (OCH)	NA				
CIRCLING	MDA / (OCH)	NA				
	VIS (m)	NA				

CHANGES: NEW CHART.