

**INSTRUMENT APPROACH  
CHART (IAC)**

**SÃO PAULO / Guarulhos - Gov. André Franco Montoro, INTL (SBGR)**

**AD ELEV: 2461'**

**ILS U ou/or LOC U RWY 09L**

D-ATIS <b>127.75</b>	APP SÃO PAULO <b>129.75 119.15 120.45 120.85 133.85 121.50</b>	TWR GUARULHOS <b>118.40 132.75 135.20 121.50</b>	GNDC GUARULHOS <b>121.70 126.90</b>
-------------------------	---	---	--

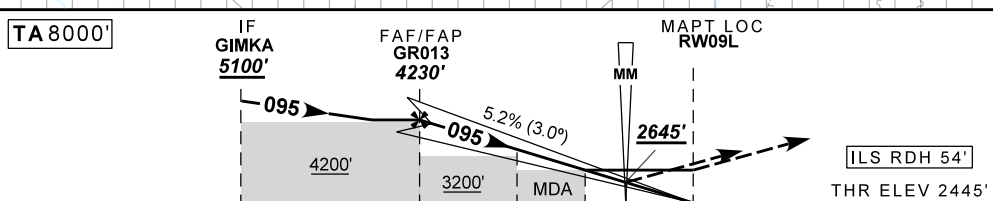
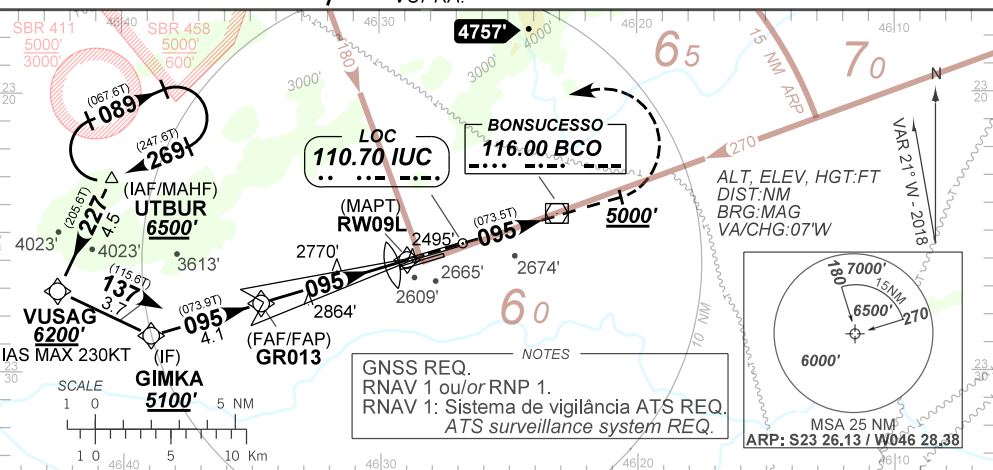
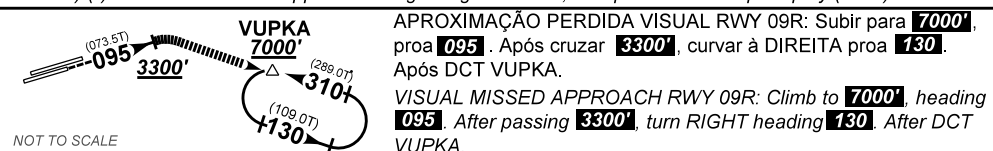
LOC IUC <b>110.70 MHz</b>	FINAL CRS <b>095°</b>	FAF: <b>4230'</b>	CAT I DA / (OCH): <b>2645' (200')</b>	LOC ONLY MDA / (OCH): <b>3070' (630')</b>
------------------------------	--------------------------	----------------------	--	--

APCH Perdida: 1) Subir para **6500'**, gradiente MNM 5%. Manter rumo **095** até passar **5000'**. Após, curvar à ESQUERDA direto UTBUR para espera. 2) IAS MAX 210KT.

Missed APCH: 1) Climb to **6500'**, MNM gradient 5%. Maintain course **095** until **5000'**. Then, turn LEFT direct to UTBUR for holding. 2) IAS MAX 210KT.

RMK: 1) (\*) RVR ALS 550m para aproximação utilizando Diretor de Voo, Piloto Automático ou Head-Up Display (HUD).

1) (\*) RVR ALS 550m for approach using a Flight Director, Autopilot or Head-Up Display (HUD).



TO THR 09L (NM)	9.5	5.4	2.8	1.8	0.5	0.0
TO BCO (DME)	15.1	11.0	8.4	7.4	6.1	5.6

GR013	4.0	3.0	2.0	1.8	RW09L	KT	90	110	130	150	170	190
4230	3773	3455	3136	3070	ALT	FPM	500	600	700	800	900	1000
1785	1328	1010	691	625	(HGT)	FAF-MAPT			NA			

STRAIGHT-IN	CAT	A	B	C	D	E
CAT I	DA / (OCH)	2645' / (200')				
	ALS/NO ALS/ RVR ALS (m)	800 / 1200 / 700*				
LOC	MDA / (OCH)	3070' / (630')				
	ALS/NO ALS/ RVR ALS (m)	800 / 1600 / NIL		2200 / 2900 / NIL		
CIRCLING	MDA / (OCH)	NA				
	VIS (m)	NA				

CHANGES: DEC. PROC.