

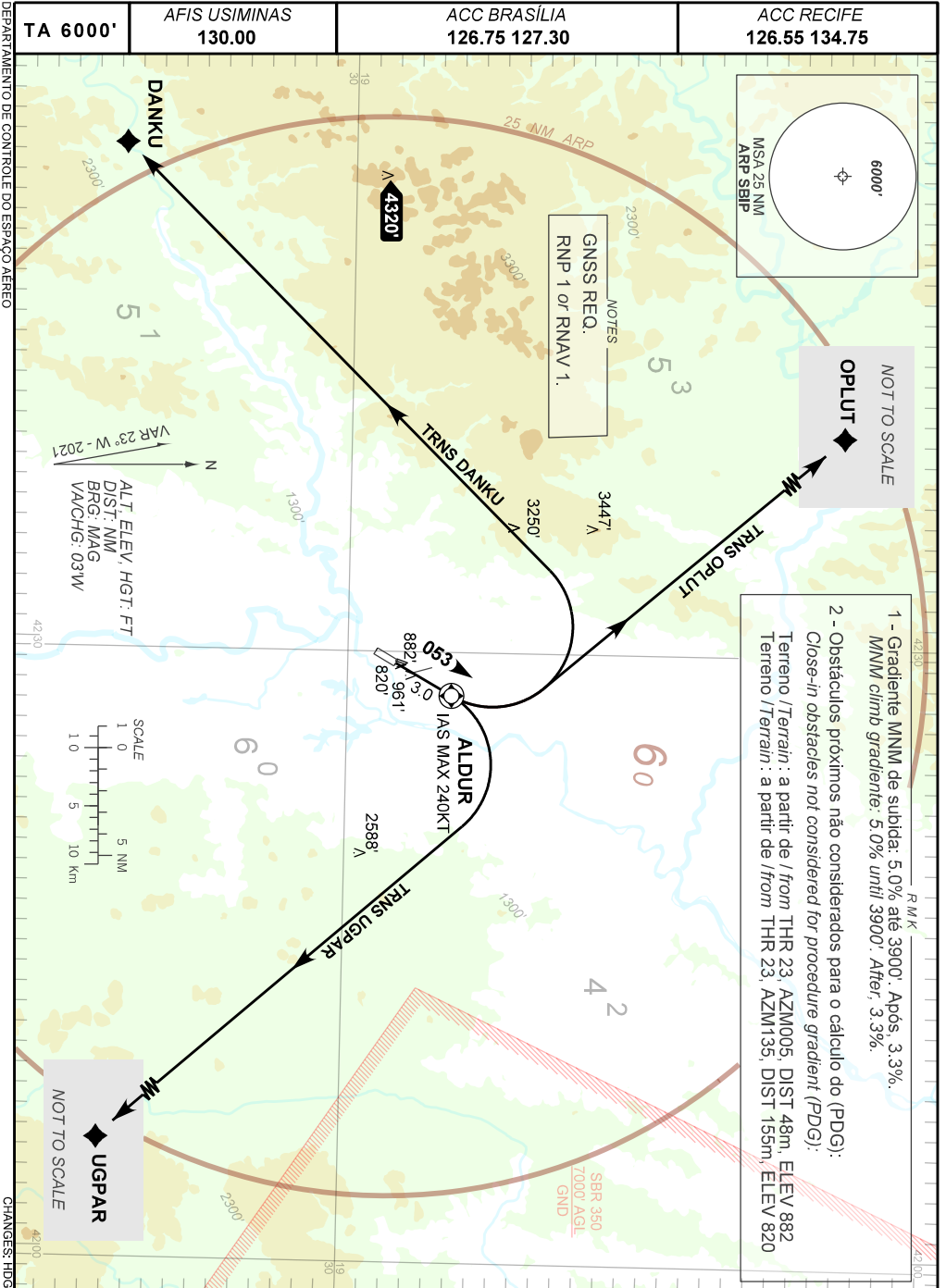
STANDARD DEPARTURE CHART  
INSTRUMENT (SID)

IPATINGA / Usiminas (SBIP)

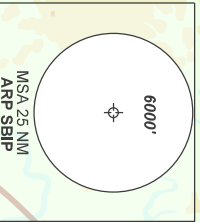
RWY 05

AD ELEV: 786'

RNAV ALDUR 1A



NOTES  
GNSS REQ.  
RNP 1 or RNAV 1.

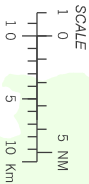


NOT TO SCALE  
OPLUT

1 - Gradiente MNM de subida: 5.0% ate 3900'. Após, 3.3% MNM climb gradient: 5.0% until 3900'. After, 3.3%.  
Terreno / Terrain: a partir de / from THR 23, AZM005, DIST 48m, ELEV 882  
Terreno / Terrain: a partir de / from THR 23, AZM135, DIST 155m, ELEV 820

2 - Obstáculos próximos não considerados para o cálculo do (PDG):  
Close-in obstacles not considered for procedure gradient (PDG):

VAR 23° W - 2021  
N  
ALT. ELEV. HGT.: FT  
DIST. NM  
BRG.: MAG  
VA/CHG.: 03W



DEPARTAMENTO DE CONTROLE DO ESPAÇO AEREO

CHANGES: HDG.