

**INSTRUMENT APPROACH  
CHART (IAC)**

**SÃO PAULO / Guarulhos - Gov. André Franco Montoro, INTL (SBGR)**

**AD ELEV: 2461'**

**VOR Y RWY 09L**

D-ATIS <b>127.75</b>	APP SÃO PAULO <b>129.75 119.15 120.45 120.85 133.85</b>			TWR GUARULHOS <b>118.40 132.75 135.20</b>	GNDC GUARULHOS <b>121.70 126.90</b>
-------------------------	--	--	--	--	--

VOR BCO <b>116.00 MHz</b>	FINAL CRS <b>095°</b>	FAF: <b>4080'</b>	N/A	VOR MDA / (OCH): <b>REFER TO MNM</b>
------------------------------	--------------------------	----------------------	-----	---

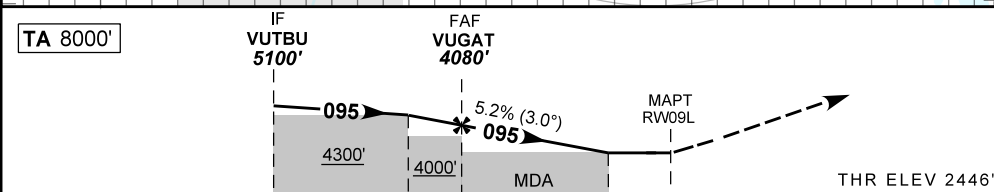
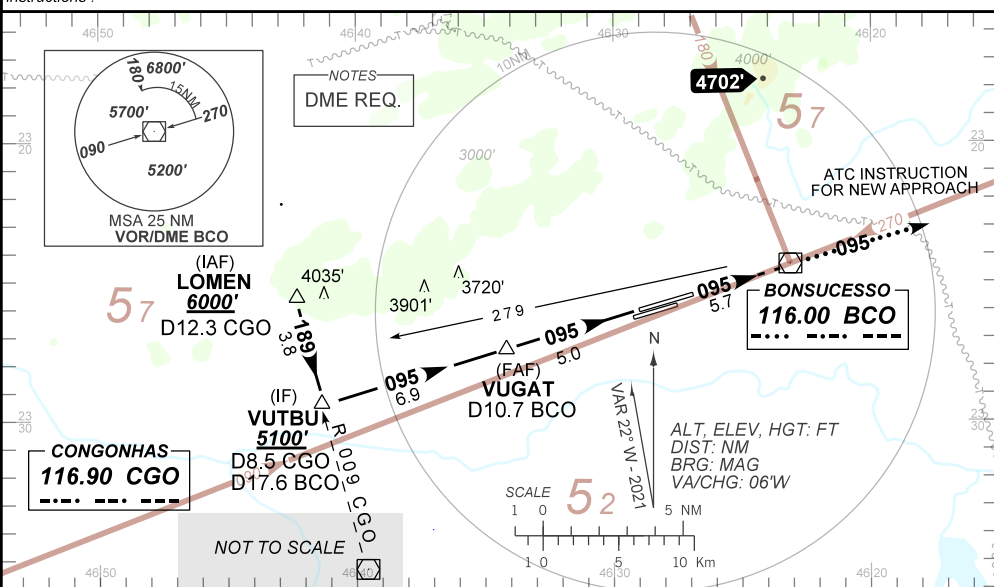
APCH Perdida: Subir para **6000'**, gradiente (\*VER MNM). Manter rumo **095** para VOR BCO e aguardar instruções ATC.  
Missed APCH: Climb to **6000'**, gradient (\*REFER TO MNM). Maintain course **095** to BCO VOR and expect ATC instructions.

RMK: NIL.

ARREMETIDA VISUAL RWY 09R: Subir para **6000'**. Manter proa **095** até **3300'**. Após, curvar à DIREITA proa **140** e aguardar instruções ATC.

VISUAL GO-AROUND RWY 09R: Climb to **6000'**. Mantain heading **095** until **3300'**. Then, turn RIGHT heading **140** and expect ATC instructions.

DEPARTAMENTO DE CONTROLE DO ESPAÇO AÉREO



TO THR 09L (NM)	11.9	6.0	5.0	2.3	0.0
TO BCO (DME)	17.6	11.7	10.7	8.0	5.7

	VUGAT	4.0	3.0	2.3	RW09L	Ground Speed (KT)	090	110	130	150	170	190
		4080	3770	3452	3240	ALT	500	600	700	800	900	NA
		1635	1324	1006	800	(HGT)	FAF-MAPT	NA				

STRAIGHT-IN	CAT	A	B	C	D	E
	MDA / (OCH)	3240' / (800')				
*Missed APCH Climb Gradient 5.0%	ALS/NO ALS/ RVR ALS (m)	1200 / 2000 / NIL			2900 / 3600 / NIL	
	MDA / (OCH)	3560' / (1110')				
*VOR	ALS/NO ALS/ RVR ALS (m)	1200 / 2000 / NIL	1600 / 2400 / NIL	4600 / 5000 / NIL		
	MDA / (OCH)	NA				
CIRCLING	MDA / (OCH)	NA				
	VIS (m)	NA				

CHANGES: DEC. IDENT. MSA. PROC.