

STANDARD DEPARTURE CHART  
INSTRUMENT (SID)

RIO DE JANEIRO / Galeão-Antônio Carlos Jobim, INTL (SBGL)  
RWY 10/15  
RNAV PCX 3A

AD ELEV: 28'

ACC CURITIBA  
124.00 125.35 128.25  
133.40 133.60

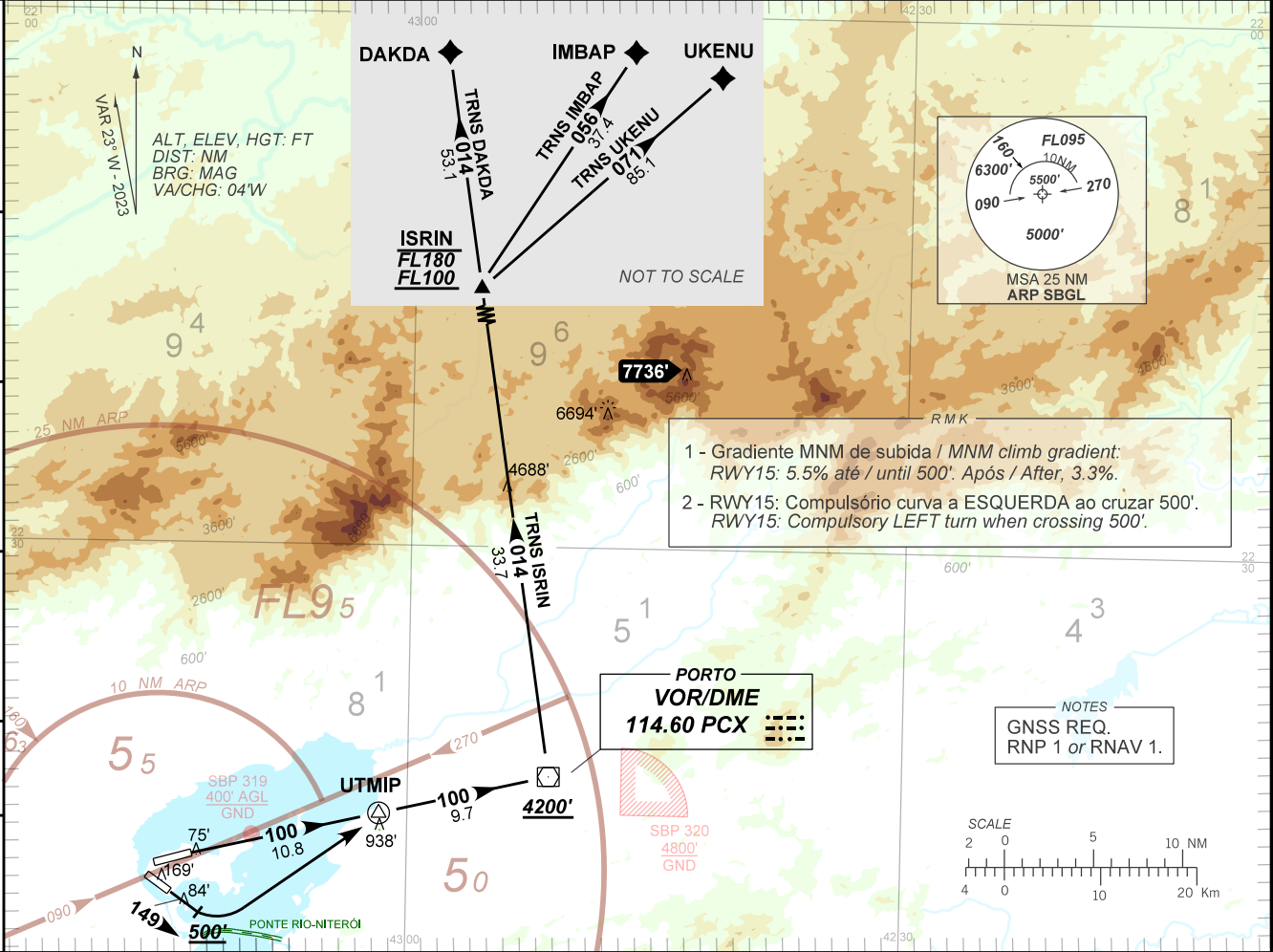
APP MACAÉ  
119.20 129.30

APP RIO  
119.725 121.25  
132.975 134.40

TWR GALEÃO  
118.00 118.20

D-ATIS  
127.60

TA 7000'



1 - Gradiente MNM de subida / MNM climb gradient:  
RWY15: 5.5% até / until 500'. Após / After, 3.3%.

2 - RWY15: Compulsório curva a ESQUERDA ao cruzar 500'.  
RWY15: Compulsory LEFT turn when crossing 500'.

NOTES  
GNSS REQ.  
RNP 1 or RNAV 1.

