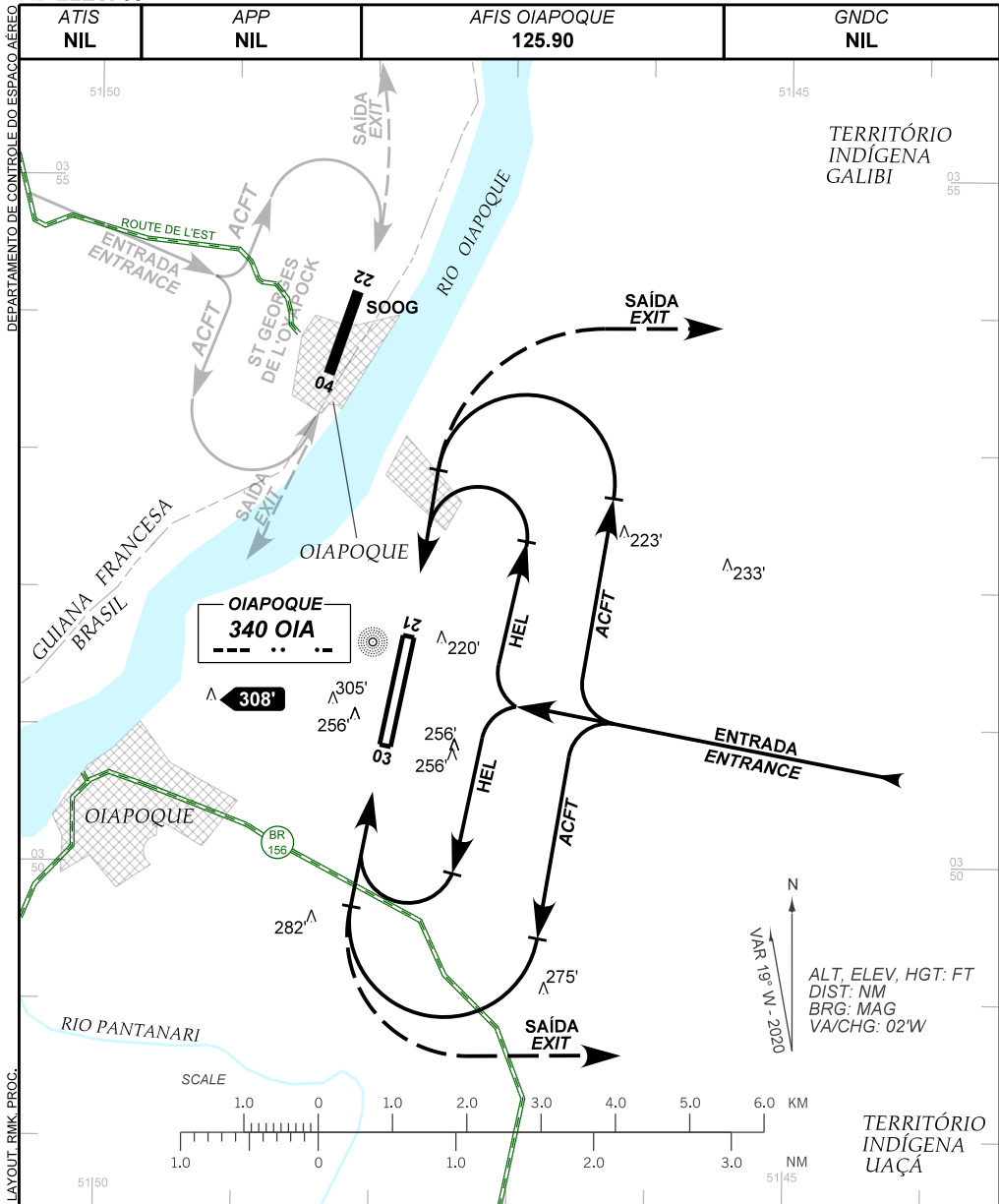


VISUAL APPROACH CHART
(VAC)

OIAPOQUE / Oiapoque (SBOI)

AD ELEV: 53'

RWY 03/21



OIAPOQUE
340 OIA

ALT, ELEV, HGT: FT
DIST: NM
BRG: MAG
VA/CHG: 02'W

RMK:
 1 - ALTITUDES MÍNIMAS NO CIRCUITO DE TRÁFEGO / MINIMUM ALTITUDES IN TRAFFIC CIRCUIT:
 1.1 - AERONAVES / AIRCRAFT / ACFT:
 - CAT A, B, C: 1100'
 1.2 - HELICÓPTEROS / HELICOPTERS / HEL: 600'
 2 - INFORMAÇÕES COMPLEMENTARES NO VERSO / SEE REVERSE SIDE FOR ADDITIONAL INFORMATION.

RMK

- 3 - PROIBIDO INGRESSAR NO CKT PELO SETOR W.
PROHIBITED TO ENTER THE CKT THROUGH SECTOR W.
- 4 - AS AERONAVES E/OU HELICÓPTEROS NOS CIRCUITOS DE TRÁFEGO, OU DECOLANDO DAS PISTAS: 03 SBOI OU 22 SOOG, NÃO DEVERÃO ULTRAPASSAR O RIO OIAPOQUE.
AIRCRAFT AND/OR HELICOPTERS ON TRAFFIC PATTERNS OR TAKING OFF FROM RUNAWAYS: 03 SBOI OR 22 SOOG, SHOULD NOT CROSS OIAPOQUE RIVER.
- 5 - PARA POUSO EM SOOG, VER VAC DESTE AERÓDROMO.
FOR SOOG LANDING, SEE VAC OF THIS AERODROME.