

INSTRUMENT APPROACH CHART (IAC)

SÃO PAULO / Guarulhos - Gov. André Franco Montoro, INTL (SBGR)

ILS O CAT I & II RWY 10L

AD ELEV: 2461'

D-ATIS 127.75	APP SÃO PAULO 129.75 119.15 120.45 120.85 133.85	TWR GUARULHOS 118.40 132.75 135.20	GNDC GUARULHOS 121.70 126.90
-------------------------	--	--	--

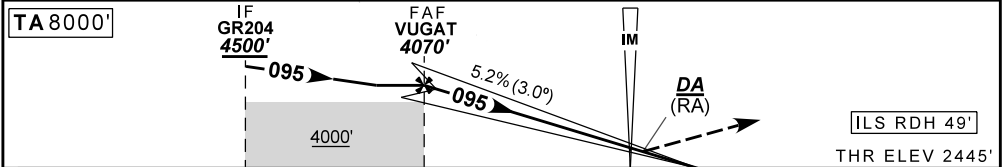
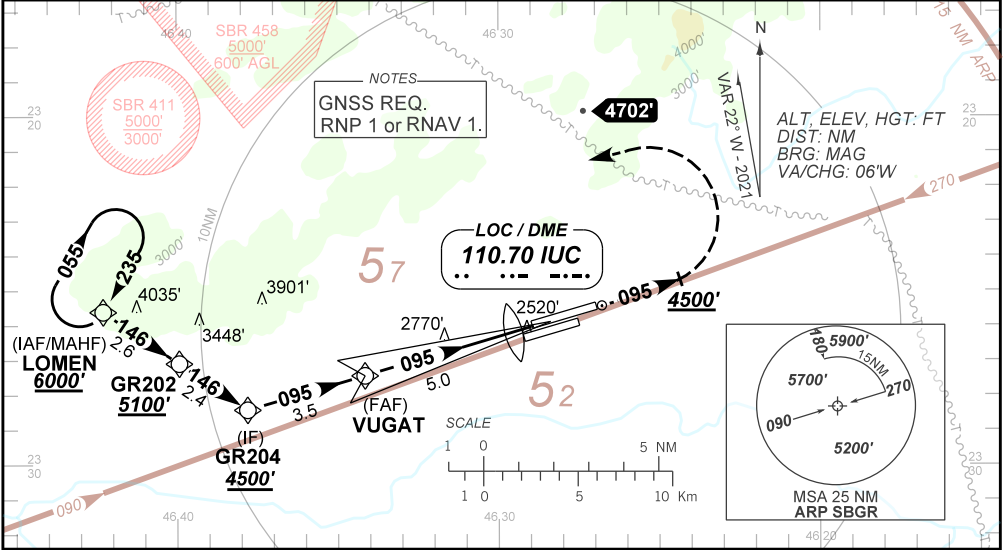
LOC IUC 110.70 MHz	FINAL CRS 095°	FAF: 4070'	CAT I & II DA / (OCH): REFER TO MNM	N/A
------------------------------	--------------------------	----------------------	---	------------

APCH Perdida: Subir para **6000'**. Manter rumo **095** até **4500'**. Após, curvar à ESQUERDA direto LOMEN para espera.

Missed APCH: Climb to **6000'**. Maintain course **095** until **4500'**. After, turn LEFT direct LOMEN for holding.

RMK:
(*) RVR ALS 550m para aproximação utilizando Diretor de Voo, Piloto Automático ou Head-Up Display (HUD);
(*) RVR ALS 550m for approach using a Flight Director, Autopilot or Head-Up Display (HUD);

ARREMETIDA VISUAL RWY 10R: Subir para **6000'**. Manter proa **095** até **3300'**. Após, curvar à DIREITA proa **140** e aguardar instrução ATC.
VISUAL GO-AROUND RWY 10R: Climb to **6000'**. Maintain heading **095** until **3300'**. After, turn RIGHT heading **140** and expect ATC instructions.



TO THR 10L (NM)	8.5	5.0	0.2	0.0
TO IUC (DME)	8.7	5.2	0.4	0.2

VUGTA	4.0	3.0	2.0	0.5	IM	RWY10L	Ground Speed (KT)	90	110	130	150	170	190
4070	3768	3450	3131	2645	2558	ALT	FPM	500	600	700	800	900	NA
1625	1323	1005	686	200	113	(HGT)	FAF-MAPT	NA					

STRAIGHT-IN	CAT	A	B	C	D	E
CAT II	DA / (OCH) / RA	2545' / (100') / 107'				
	ALS/NO ALS/ RVR ALS (m)	NIL / NIL / 300				
CAT I	DA / (OCH)	2645' / (200')				
	ALS/NO ALS/ RVR ALS (m)	800 / 1200 / 700*				
CIRCLING	MDA / (OCH)	NA				
	VIS (m)	NA				

DEPARTAMENTO DE CONTROLE DO ESPAÇO AÉREO

CHANGES: LAYOUT, THR.