

**INSTRUMENT APPROACH  
CHART (IAC)**

**BELÉM / Val de Cans - Júlio Cezar Ribeiro, INTL (SBBE)**

**AD ELEV: 56'**

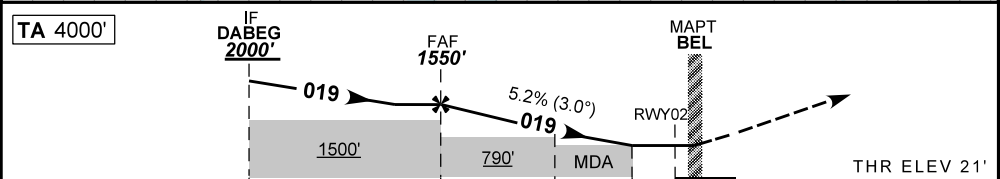
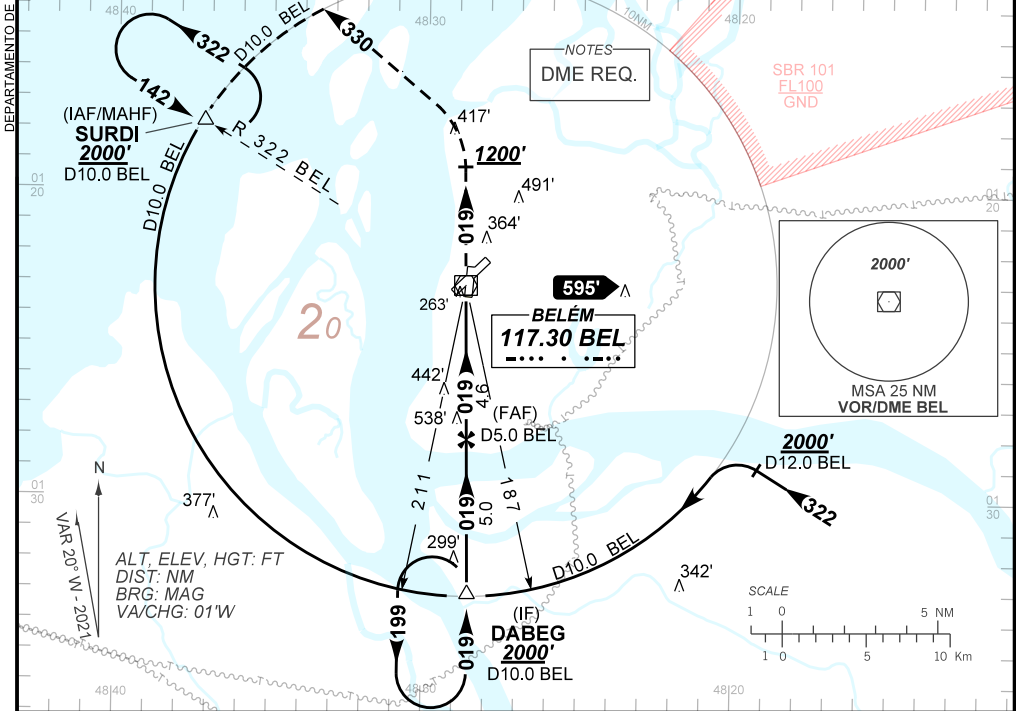
**VOR RWY 02**

D-ATIS <b>127.60</b>	APP BELÉM <b>119.05 119.50</b>	TWR BELÉM <b>118.70</b>	GNDC BELÉM <b>121.90</b>
-------------------------	-----------------------------------	----------------------------	-----------------------------

VOR BEL <b>117.30 MHz</b>	FINAL CRS <b>019°</b>	FAF: <b>1550'</b>	N/A	VOR MDA / (OCH): <b>650' / (630')</b>
------------------------------	--------------------------	----------------------	-----	--

APCH Perdida: Subir para **2000'**. Manter o rumo **019** até **1200'**. Após, curvar à ESQUERDA na proa **330** para interceptar o arco de 10NM do VOR BEL até SURDI para espera.

Missed APCH: Climb to **2000'**. Maintain course **019** until **1200'**. After, turn LEFT heading **330** to intercept 10NM arc BEL VOR until SURDI for holding.



TO THR 02 (NM)	9.6	4.6	3.1	1.8	0.0
TO BEL (DME)	10.0	5.0	3.5	2.2	0.4

	FAF	4.0	3.1	1.8	RWY02	Ground Speed (KT)	090	110	130	150	170	190
	1550	1345	1060	650	ALT	FPM	500	600	700	800	900	NA
	1529	1324	1039	630	(HGT)	FAF-MAPT	NA					

STRAIGHT-IN	CAT	A	B	C	D	E
VOR	MDA / (OCH)	650' / (630')				
	ALS/SNO ALS/ RVR ALS (m)	NIL / 1600 / NIL		NIL / 2900 / NIL		
CIRCLING	MDA / (OCH)	NA				
	VIS (m)	NA				

CHANGES: EAC, IDENT, LAYOUT, PROC, VAR.