

**INSTRUMENT APPROACH  
CHART (IAC)**

**CURITIBA / Afonso Pena, INTL (SBCT)**

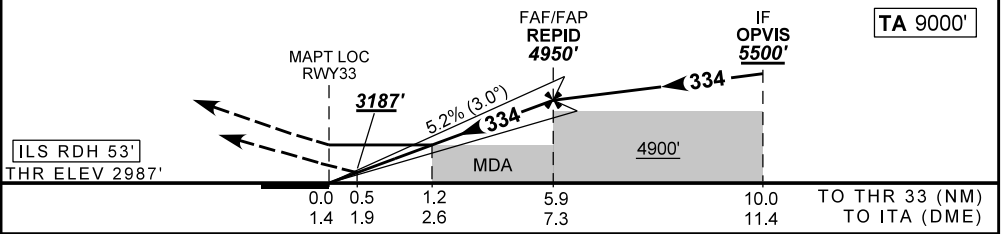
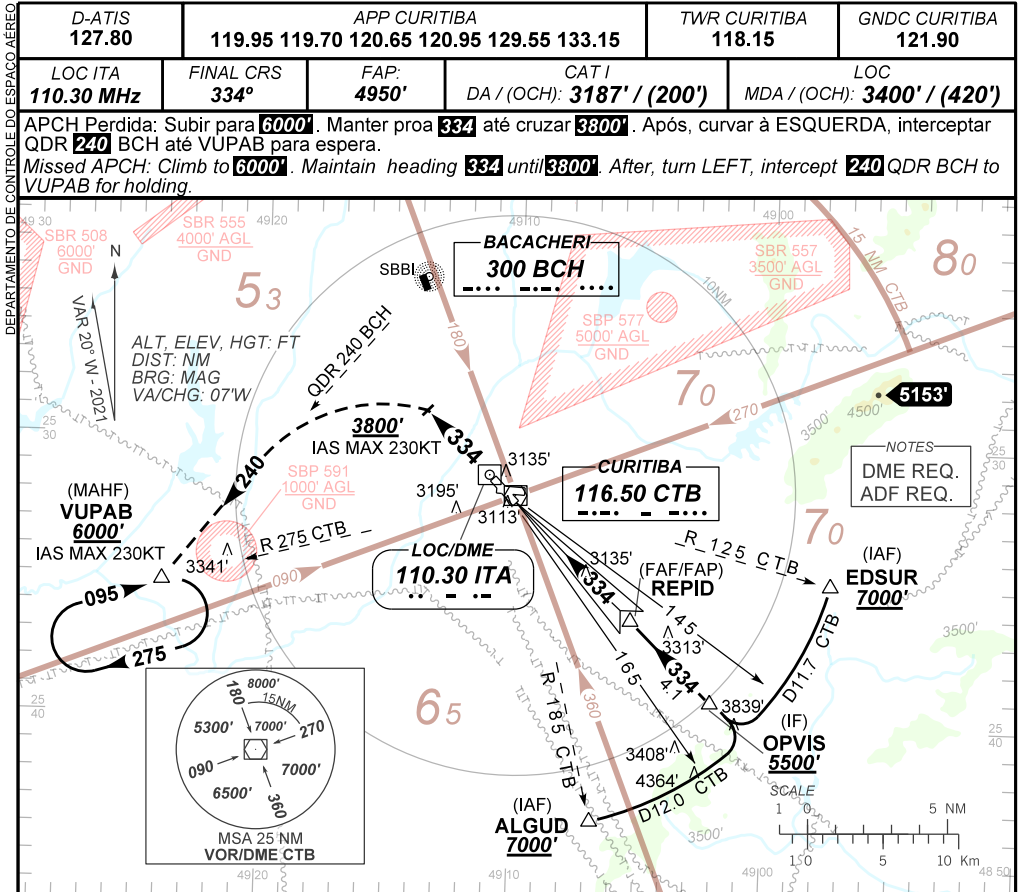
**AD ELEV: 2989'**

**ILS S or LOC S RWY 33**

D-ATIS <b>127.80</b>	APP CURITIBA <b>119.95 119.70 120.65 120.95 129.55 133.15</b>			TWR CURITIBA <b>118.15</b>	GNDC CURITIBA <b>121.90</b>
LOC ITA <b>110.30 MHz</b>	FINAL CRS <b>334°</b>	FAP: <b>4950'</b>	CAT I DA / (OCH): <b>3187' / (200')</b>	LOC MDA / (OCH): <b>3400' / (420')</b>	

APCH Perdida: Subir para **6000'**. Manter proa **334** até cruzar **3800'**. Após, curvar à ESQUERDA, interceptar QDR **240** BCH para espera.

Missed APCH: Climb to **6000'**. Maintain heading **334** until **3800'**. After, turn LEFT, intercept **240** QDR BCH to VUPAB for holding.



RWY33	1.2	2.0	3.0	4.0	5.0	REPID	Ground Speed (KT)	090	110	130	150	170	190
ALT	3400	3677	3995	4314	4632	4950	FPM	500	600	700	800	900	NA
(HGT)	420	690	1008	1327	1645	1963	FAF-MAPT	NA					

STRAIGHT-IN	CAT	A	B	C	D	E
CAT I	DA / (OCH)	3187' / (200')				
	ALS/NO ALS/ RVR ALS (m)	NIL / 1200 / NIL				
LOC	MDA / (OCH)	3400' / (420')				
	ALS/NO ALS/ RVR ALS (m)	NIL / 1600 / NIL		NIL / 1900 / NIL		
CIRCLING	MDA / (OCH)	NA				
	VIS (m)	NA				

CHANGES: LAYOUT, VAR.