

AD ELEV: 2721'

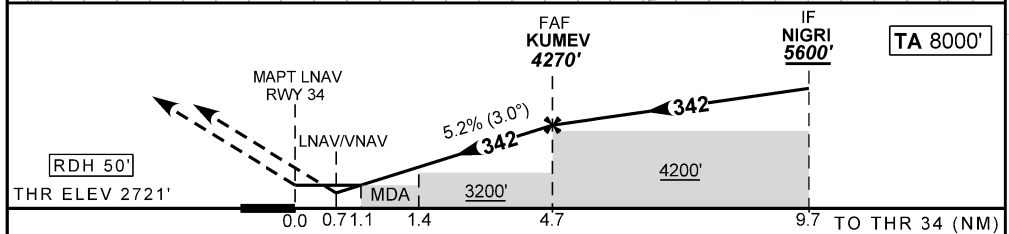
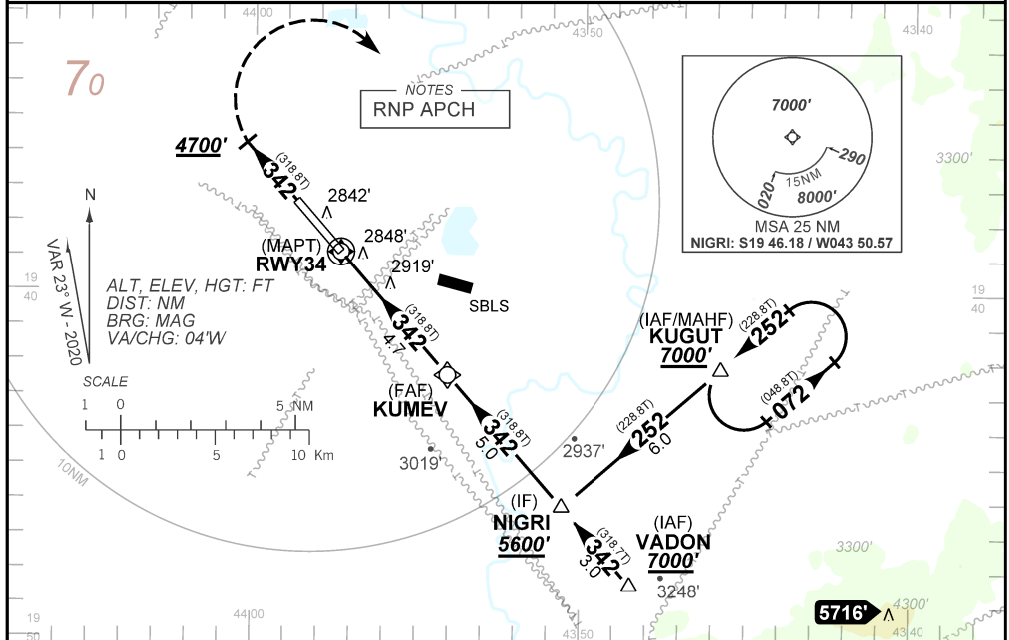
RNP Z RWY 34

D-ATIS 127.85	APP BELO HORIZONTE 119.10 119.30 119.65 120.20 128.55 129.10 129.40 121.50	TWR CONFINS 118.20 121.50	GNDC CONFINS 121.90
------------------	--	------------------------------	------------------------

N/A	FINAL CRS 342°	FAF: 4270'	LNAV / VNAV DA / (OCH): 3009' / (288')	LNAV MDA / (OCH): 3130' / (410')
-----	-------------------	---------------	---	-------------------------------------

APCH Perdida: Subir para **7000'**, manter o rumo **342**. Após **4700'**, curvar à DIREITA para espera em KUGUT.
Missed APCH: Climb to **7000'**, maintain course **342**. After **4700'**, turn right for holding at KUGUT.

RMK: Para sistemas não compensados, LNAV/VNAV não autorizado abaixo de 0°C ou acima de 40°C.
For uncompensated systems, LNAV/VNAV procedure not authorized below 0°C or above 40°C.



RWY34	0.7	1.1	2.0	3.0	4.0	KUMEV	KT	090	110	130	150	170	190
ALT	3009	3130	3408	3726	4045	4270	FPM	500	600	700	800	900	1000
(HGT)	288	410	687	1005	1324	1549	FAF-MAPT	NA					

STRAIGHT-IN	CAT	A	B	C	D	E
LNAV/VNAV	DA / (OCH)	3009' / (288')				NA
	ALS/NO ALS/ RVR ALS (m)	NIL / 1400 / NIL				
LNAV	MDA / (OCH)	3130' / (410')				
	ALS/NO ALS/ RVR ALS (m)	NIL / 1600 / NIL		NIL / 1900 / NIL		
CIRCLING	MDA / (OCH)	NA				
	VIS (m)					

CHANGES: NEW CHART