

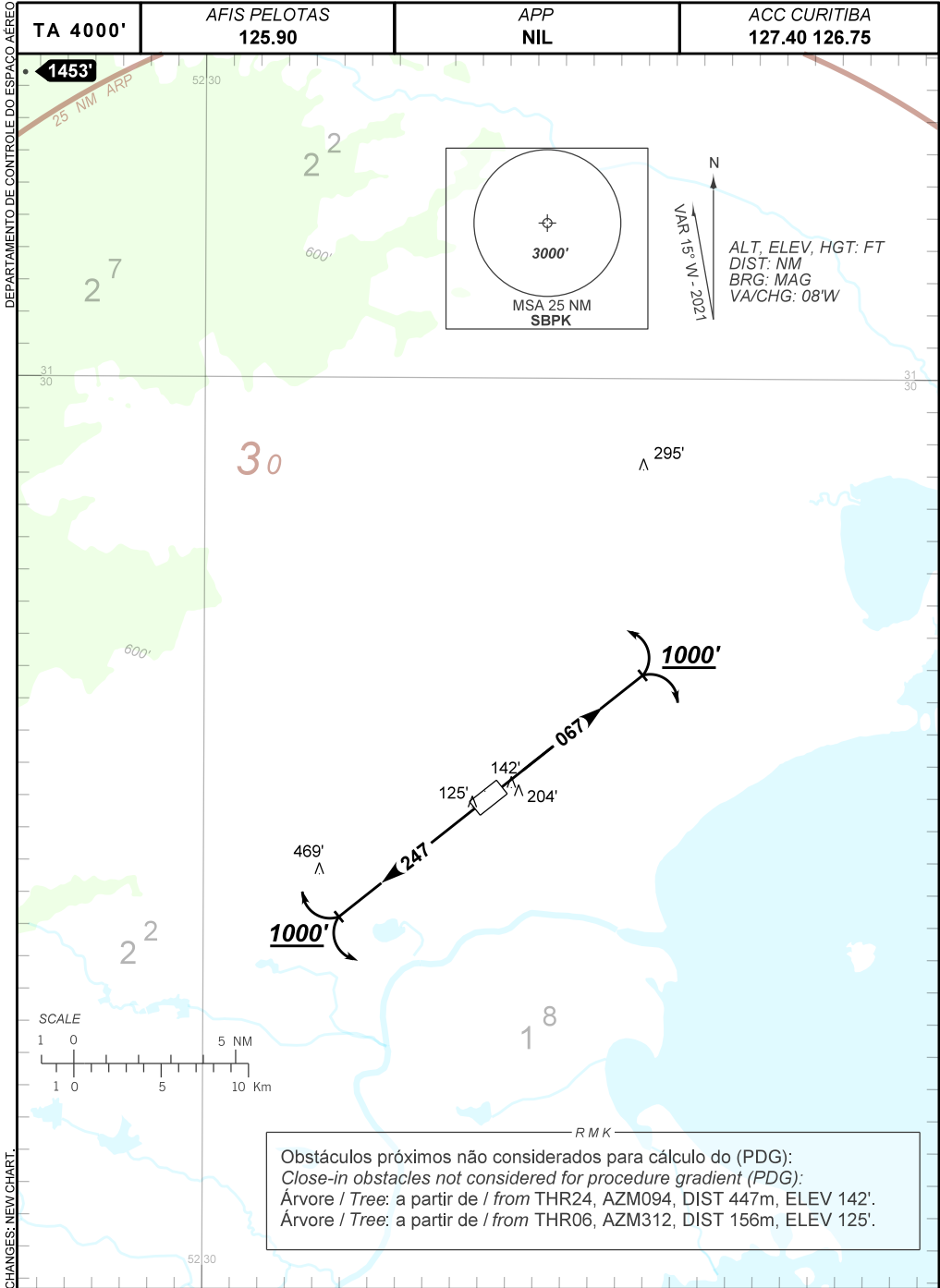
DEPARTURE CHART  
INSTRUMENT (SID)

PELOTAS / João Simões Lopes Neto, INTL (SBPK)

RWY 06/24

OMNI

AD ELEV: 59'



Obstáculos próximos não considerados para cálculo do (PDG):  
 Close-in obstacles not considered for procedure gradient (PDG):  
 Árvore / Tree: a partir de / from THR24, AZM094, DIST 447m, ELEV 142'.  
 Árvore / Tree: a partir de / from THR06, AZM312, DIST 156m, ELEV 125'.

CHANGES: NEW CHART.