

**INSTRUMENT APPROACH
CHART (IAC)**

UNA / Comandatuba (SBTC)

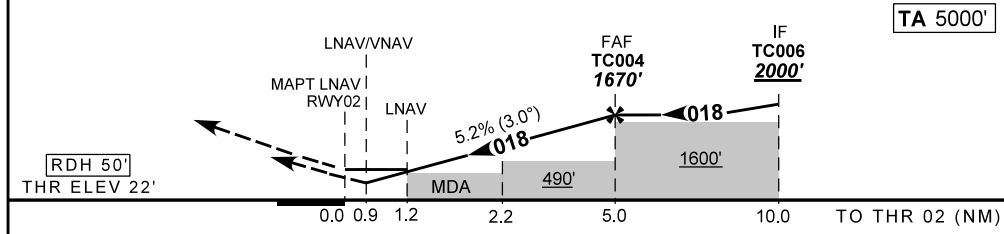
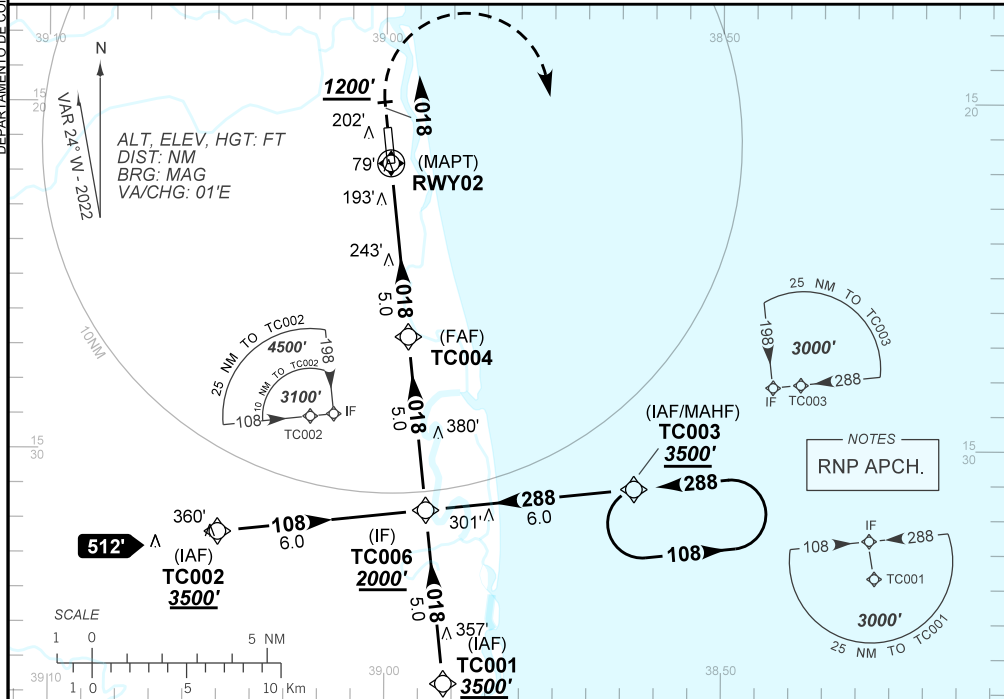
RNP Z RWY 02

AD ELEV: 23'

ATIS NIL	APP ILHÉUS 120.10	RÁDIO COMANDATUBA 130.25	GNDC NIL
TEMP LNAV/VNAV MIN 0°C / MAX 50°C	FINAL CRS 018°	FAF: 1670'	LNAV/VNAV DA / (OCH): 355' / (333')
			LNAV MDA / (OCH): 440' / (420')

APCH Perdida: Subir para **3500'**. Manter proa **018** até **1200'**. Após, curvar à DIREITA direto TC003 para espera.
Missed APCH: Climb to **3500'**. Maintain heading **018** until **1200'**. After, turn RIGHT direct TC003 for holding.

DEPARTAMENTO DE CONTROLE DO ESPAÇO AERÉO



RWY02	1.2	2.2	3.0	4.0	TC004	Ground Speed (KT)	090	110	130	150	170	190
ALT	440	770	1027	1346	1670	FPM	500	600	700	800	900	NA
(HGT)	420	748	1005	1324	1648	FAF-MAPT	NA					

STRAIGHT-IN	CAT	A	B	C	D	E
	DA / (OCH)	355' / (333')				
LNAV/VNAV	ALS/NO ALS/ RVR ALS (m)	NIL / 1500 / NIL				
	MDA / (OCH)	440' / (420')				
LNAV	ALS/NO ALS/ RVR ALS (m)	NIL / 1600 / NIL		NIL / 1900 / NIL		
	MDA / (OCH)	NA				
CIRCLING	VIS (m)	NA				

CHANGES: PROC. TAA.