

**INSTRUMENT APPROACH
CHART (IAC)**

CURITIBA / Afonso Pena, INTL (SBCT)

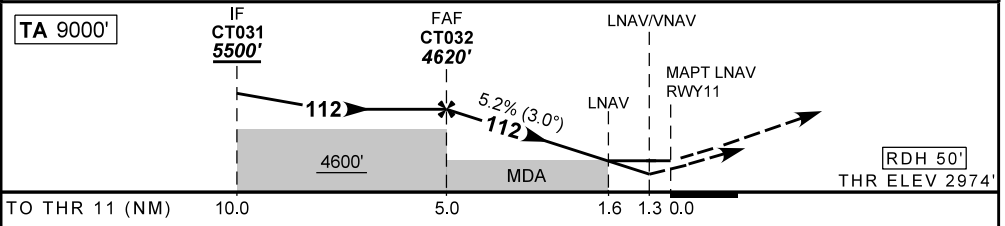
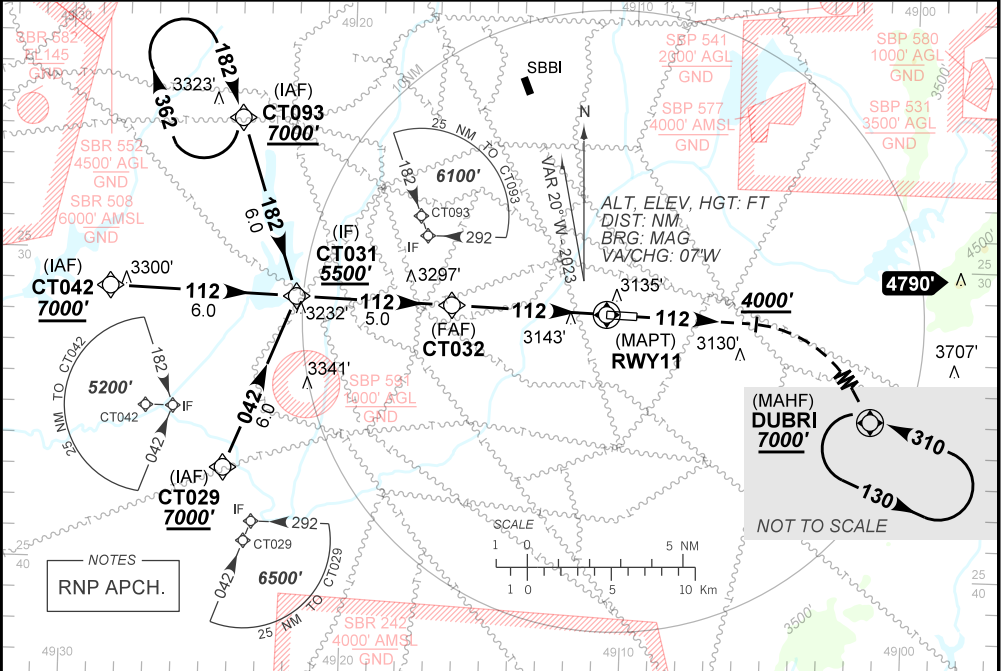
AD ELEV: 2989'

RNP RWY 11

D-ATIS 127.80	APP CURITIBA 119.95 119.70 120.65 120.95 129.55 133.15			TWR CURITIBA 118.15	GND: CURITIBA 121.90
TEMP LNAV/VNAV MIN -10°C / MAX 45°C	FINAL CRS 112°	FAF: 4620'	LNAV/VNAV DA / (OCH): 3444' / (470')	LNAV MDA / (OCH): 3530' / (560')	

APCH Perdida: 1) Subir para **7000'**. Manter rumo **112** até cruzar **4000'**. Então, curvar à DIREITA direto DUBRI para espera. 2) IAS MAX 250KT até DUBRI.
Missed APCH: 1) Climb to **7000'**. Maintain course **112** until passing **4000'**. Then, turn RIGHT direct DUBRI for holding. 2) IAS MAX 250KT until DUBRI.

DEPARTAMENTO DE CONTROLE DO ESPAÇO AÉREO



	CT032	4.0	3.0	2.0	1.6	RWY11	Ground Speed (KT)	090	110	130	150	170	190
	4620	4298	3979	3661	3530	ALT	FPM	500	600	700	800	900	NA
	1646	1324	1005	687	560	(HGT)	FAF-MAPT	NA					

STRAIGHT-IN	CAT	A	B	C	D	E
	DA / (OCH)	3444' / (470')				
LNAV/VNAV	ALS/NO ALS/ RVR ALS (m)	NIL / 2200 / NIL				
	MDA / (OCH)	3530' / (560')				
LNAV	ALS/NO ALS/ RVR ALS (m)	NIL / 2200 / NIL		NIL / 2500 / NIL		
	MDA / (OCH)	NA				
CIRCLING	MDA / (OCH)	NA				
	VIS (m)	NA				

CHANGES: EAC. LAYOUT. OBST. VAR.