

**INSTRUMENT APPROACH  
CHART (IAC)**

**LONDRINA / Governador José Richa (SBLO)**

**RNP X RWY 13 (AR)**

**AD ELEV: 1867'**

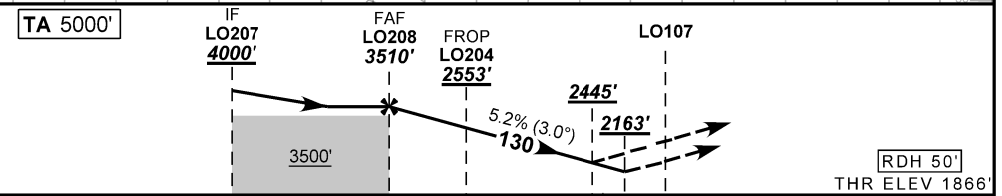
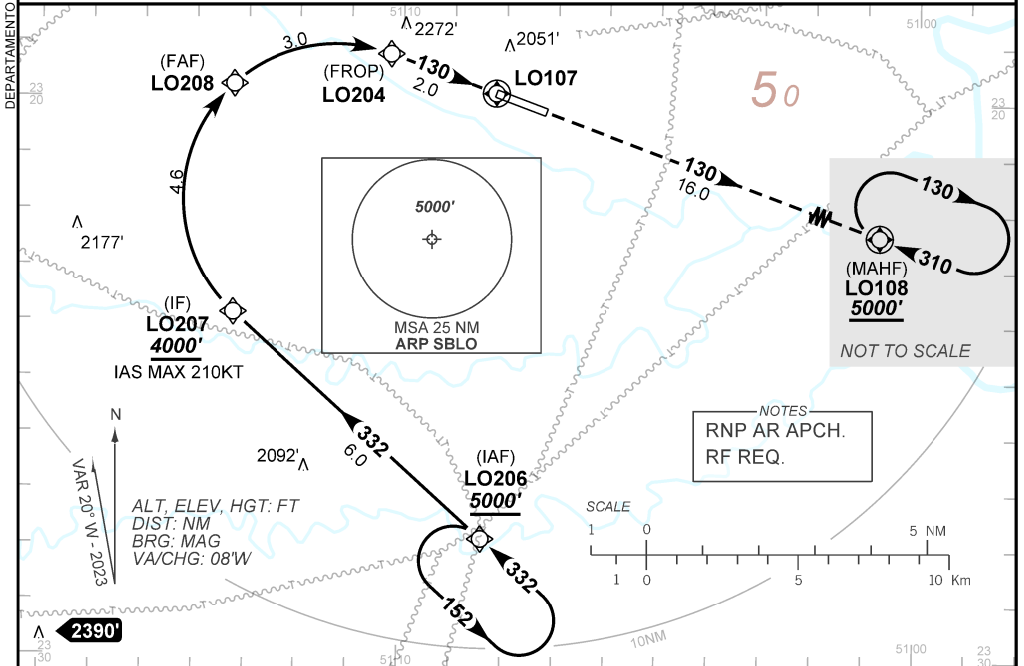
ATIS <b>127.675</b>	APP LONDRINA <b>129.70</b>	TWR LONDRINA <b>118.40</b>	GNDC <b>NIL</b>
TEMP LNAV/VNAV <b>MIN 0°C / MAX 45°C</b>	FINAL CRS <b>130°</b>	FAF: <b>3510'</b>	RNP 0.2 DA / (OCH): <b>2163' / (297')</b>
		RNP 0.3 DA / (OCH): <b>2445' / (579')</b>	

APCH Perdida: Subir para **5000'**, rumo **130**, para espera em LO108.

Missed APCH: Climb to **5000'**, course **130**, to LO108 for holding.

RMK: Não efetuar transição para RNP da aproximação perdida antes de 0.77NM de LO107.

Do not perform transition to missed approach RNP before 0.77NM of LO107.



TO THR 13 (NM)	9.6	5.0	2.0	1.7	0.77	0.0
----------------	-----	-----	-----	-----	------	-----

LO208	4.0	3.0	LO204	1.7	0.77	LO107	Ground Speed (KT)	090	110	130	150	170	190
3510	3190	2871	2553	2445	2163	ALT	FPM	500	600	700	800	900	NA
1644	1324	1005	687	579	297	(HGT)	FAF-MAPT	NIL					

STRAIGHT-IN	CAT	A	B	C	D	E
	DA / (OCH)	2163' / (297')				
RNP 0.2	NIL / 1400 / NIL					
RNP 0.3	DA / (OCH)	2445' / (579')				
	ALS/NO ALS/ RVR ALS (m)	NIL / 2600 / NIL				

**AUTORIZAÇÃO ESPECIAL PARA AERONAVE E TRIPULAÇÃO REQUERIDA**  
SPECIAL AUTHORIZATION FOR AIRCRAFT AND CREW REQUIRED

Aprovação Específica  
(ANAC IS 91.001)  
Specific Approval  
(ANAC IS 91.001)