

**INSTRUMENT APPROACH
CHART (IAC)**

PATOS DE MINAS / Patos de Minas (SNPD)

AD ELEV: 2794'

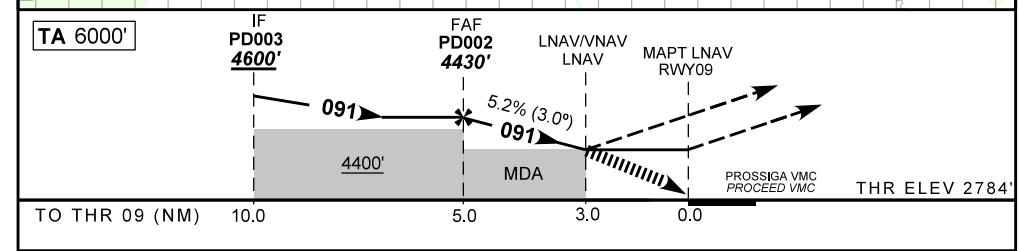
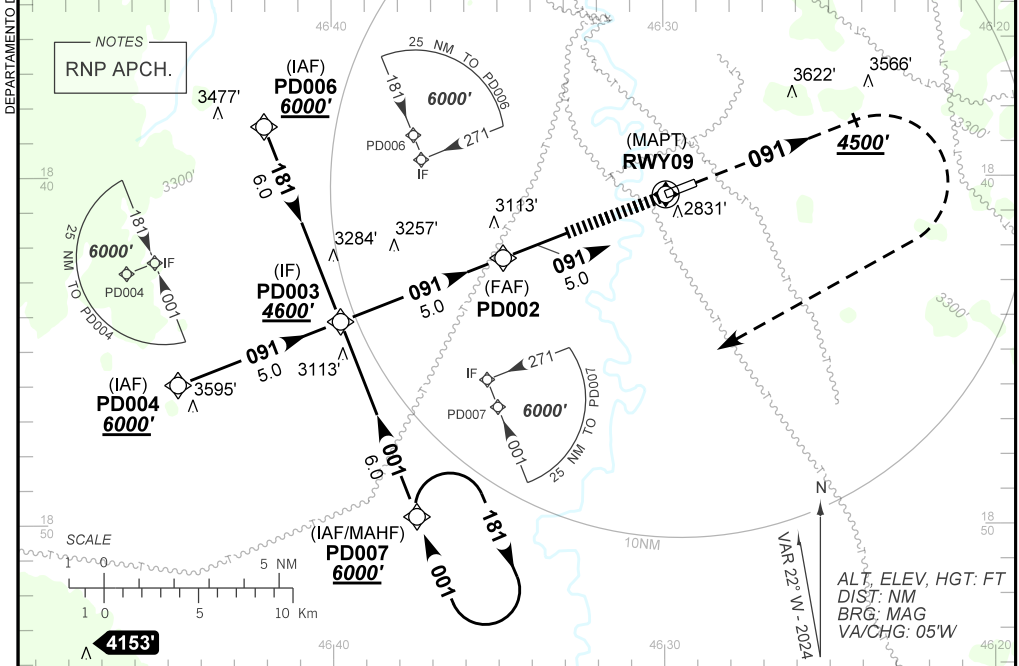
RNP RWY 09

ATIS NIL	ERAA 127.80	APP NIL	TWR NIL	GNDC NIL
-------------	----------------	------------	------------	-------------

TEMP LNAV/VNAV MIN 0°C / MAX 50°C	FINAL CRS 091°	FAF: 4430'	LNAV/VNAV DA / (OCH): 3784' / (1000')	LNAV MDA / (OCH): 3790' / (1000')
---	--------------------------	----------------------	---	---

APCH Perdida: Subir para **6000'**. Manter proa **091** até **4500'**. Após, curvar à DIREITA direto PD007 para espera.
Missed APCH: Climb to **6000'**. Maintain heading **091** until **4500'**. After, turn RIGHT direct PD007 for holding.

RMK: Prosseguir VMC a partir de 3 NM do MAPT ou efetuar Aproximação Perdida.
Proceed VMC at 3NM to MAPT or perform Missed Approach.



TO THR 09 (NM)	10.0	5.0	3.0	0.0
----------------	------	-----	-----	-----

	PD002	4.0	3.0	RWY09	Ground Speed (KT)	090	110	130	150	170	190
	4430	4108	3790	ALT	FPM	500	600	700	800	900	1000
	1646	1324	1000	(HGT)	FAF-MAPT	NIL					
STRAIGHT-IN	CAT	A	B	C	D	E					
LNAV/VNAV	DA / (OCH)	3784' / (1000')				NA					
	ALS/NO ALS/ RVR ALS (m)	NIL / 5000 / NIL									
LNAV	MDA / (OCH)	3790' / (1000')									
	ALS/NO ALS/ RVR ALS (m)	NIL / 5000 / NIL									
CIRCLING	MDA / (OCH)	NA									
	VIS (m)	NA									