

INSTRUMENT APPROACH
CHART (IAC)

RIO BRANCO / Plácido de Castro, INTL (SBRB)

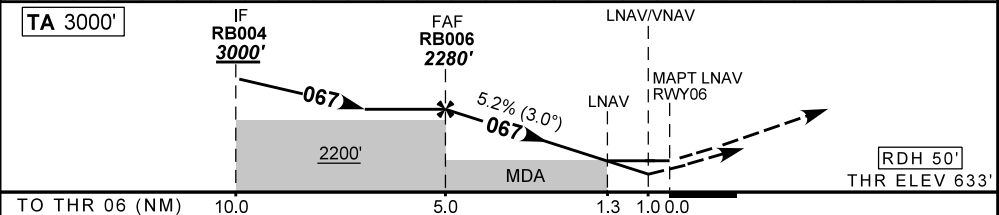
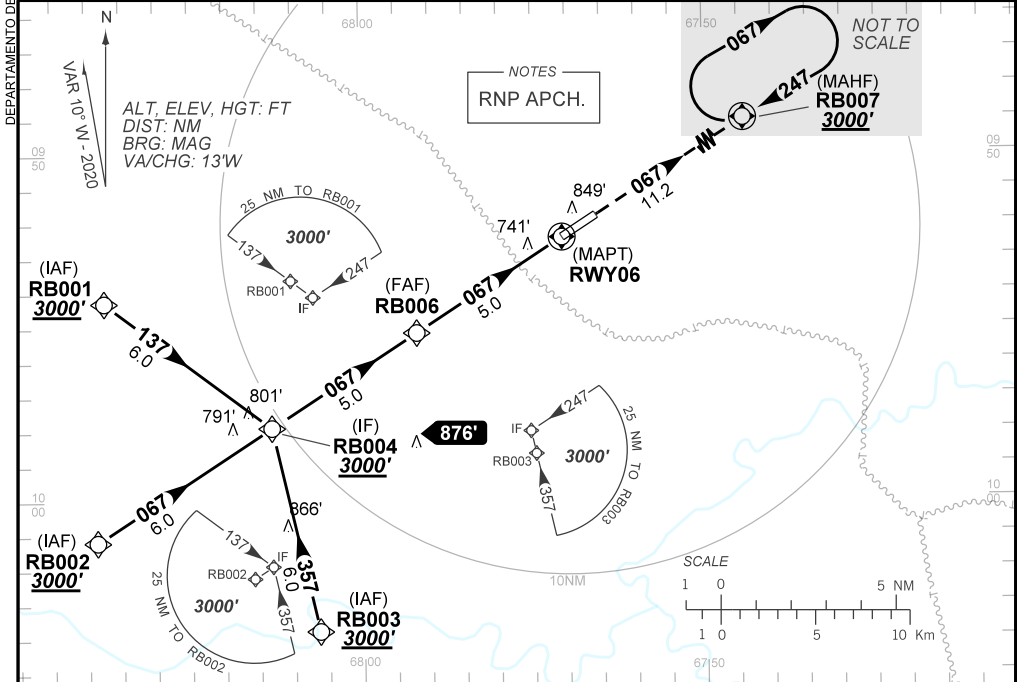
AD ELEV: 633'

RNP RWY 06

D-ATIS NIL	APP RIO BRANCO 119.90	TWR RIO BRANCO 118.70	GNDC NIL
TEMP LNAV/VNAV MIN 0°C / MAX 50°C	FINAL CRS 067°	FAF: 2280'	LNAV/VNAV DA / (OCH): 1010' / (378')
		MDA / (OCH): 1080' / (450')	LNAV

APCH Perdida: Subir para 3000' no rumo 067' para espera em RB007.

Missed APCH: Climb to 3000' on course 067' for holding at RB007.



	RB006	4.0	3.0	2.0	1.3	RWY06	Ground Speed (KT)	090	110	130	150	170	190	
		2280	1957	1638	1320	1080	FPM	500	600	700	800	900	NA	
		1647	1324	1005	687	450	(HGT)	FAF-MAPT						NIL

STRAIGHT-IN	CAT	A	B	C	D	E
	DA / (OCH)	1010' / (378')				NA
LNAV/VNAV	ALS/NO ALS/ RVR ALS (m)	1000 / 1700 / 1000				
	MDA / (OCH)	1080' / (450')				
LNAV	ALS/NO ALS/ RVR ALS (m)	1000 / 1700 / 1000		1400 / 2100 / 1250		
	MDA / (OCH)	NA				
CIRCLING	MDA / (OCH)	NA				
	VIS (m)	NA				