

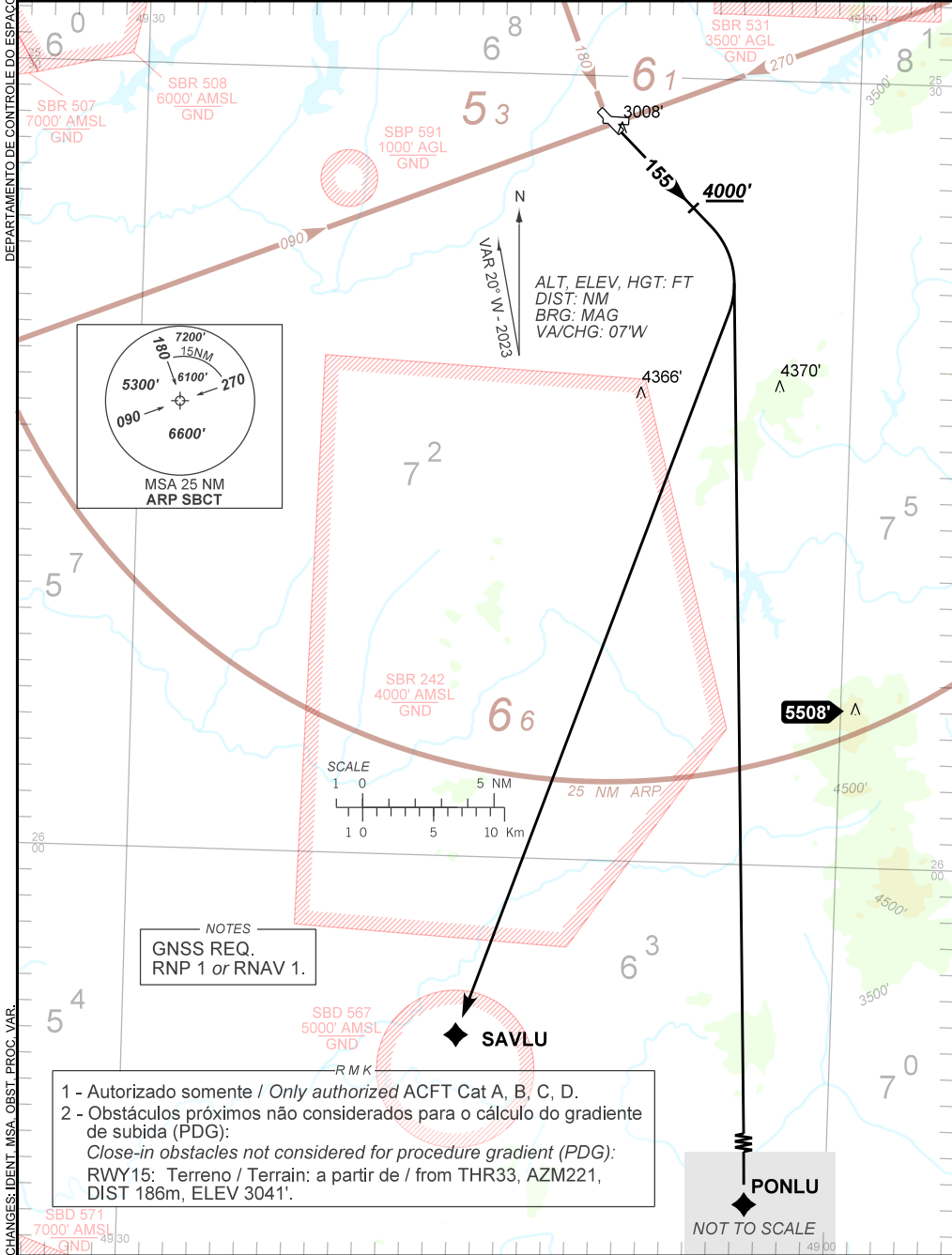
STANDARD DEPARTURE CHART  
INSTRUMENT (SID)

CURITIBA / Afonso Pena, INTL (SBCT)  
RWY 15

AD ELEV: 2989'

RNAV PONLU 1A - SAVLU 1A

TA 9000'	D-ATIS 127.80	TWR CURITIBA 118.15	APP CURITIBA 119.70 119.95 120.65 120.95 129.55 133.15	ACC CURITIBA 124.775 128.45 135.00 135.85
----------	---------------	---------------------	---	---



1 - Autorizado somente / Only authorized ACFT Cat A, B, C, D.  
2 - Obstáculos próximos não considerados para o cálculo do gradiente de subida (PDG):  
Close-in obstacles not considered for procedure gradient (PDG):  
RWY15: Terreno / Terrain: a partir de / from THR33, AZM221, DIST 186m, ELEV 3041'.

PONLU  
NOT TO SCALE