

STANDARD ARRIVAL CHART  
INSTRUMENT (STAR)

BRASÍLIA / Pres. Juscelino Kubitschek, INTL (SBBR)

RWY 29L / 29R

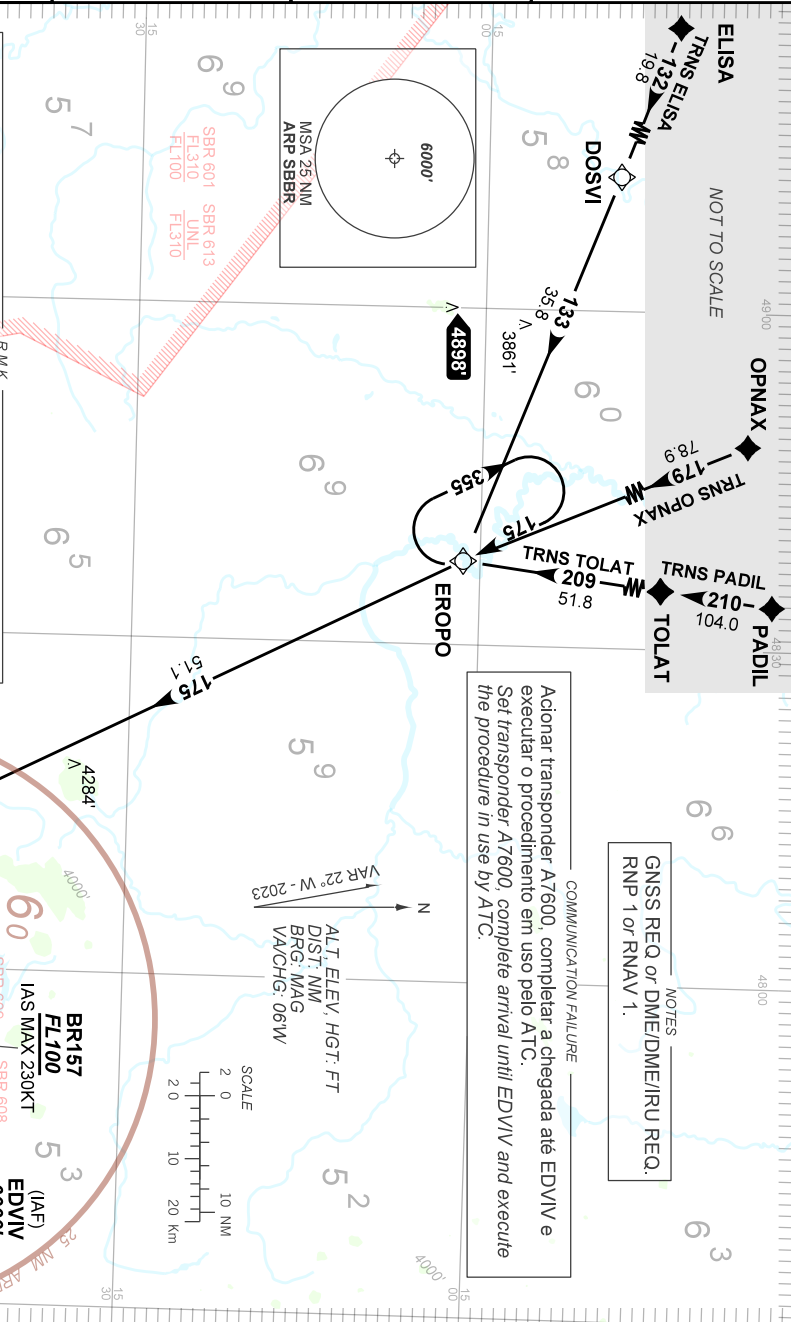
RNAV EROPO 1B

AD ELEV: 3498'

TA 7000'	D-ATIS 127.80	ACC BRASÍLIA 124.70 133.05	APP BRASÍLIA 120.00 120.30 119.50 129.60	TWR BRASÍLIA 118.10 118.45 118.75
----------	------------------	-------------------------------	--	--------------------------------------

DEPARTAMENTO DE CONTROLE DO ESPAÇO AEREO

- 1 - IAF MNM ALT poderá ser 7000' de acordo com o IAP em uso.  
IAF MNM ALT may be 7000' according to the IAP in use.
- 2 - DME críticos: APO, FSA, GMM e LUZ.  
Critical DME: APO, FSA, GMM and LUZ.
- 3 - Para aeronaves não equipadas com GNSS: ATSS surveillance required.  
For aircraft non equipped with GNSS: ATSS surveillance required.



CHANGES: RMK.