

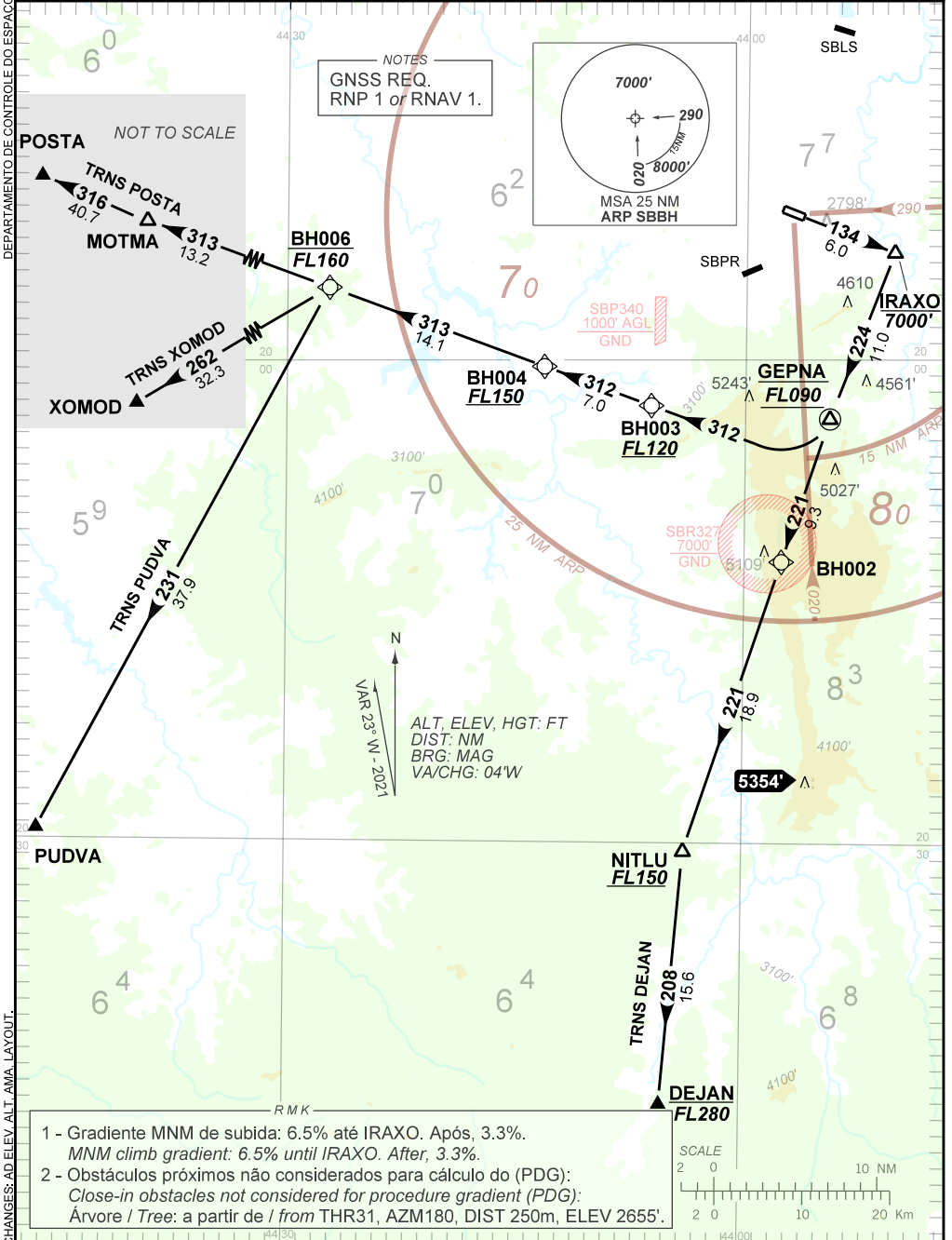
STANDARD DEPARTURE CHART **BELO HORIZONTE / Pampulha - Carlos Drummond de Andrade (SBBH)**
INSTRUMENT (SID)

RWY 13

AD ELEV: 2589'

RNAV GEPNA 1A

TA 8000'	D-ATIS 127.45	TWR BELO HORIZONTE 118.00	APP BELO HORIZONTE 119.10 119.30 119.65 120.20 128.55 129.10 129.40	ACC BRASILIA 123.00 127.00 124.80 135.55	ACC CURITIBA 124.00 125.35 128.25
-----------------	----------------------	----------------------------------	--	---	--



DEPARTAMENTO DE CONTROLE DO ESPAÇO AÉREO

CHANGES: AD ELEV. ALT. AMA. LAYOUT.

- 1 - Gradiente MNM de subida: 6.5% até IRAXO. Após, 3.3%.
 MNM climb gradient: 6.5% until IRAXO. After, 3.3%.
- 2 - Obstáculos próximos não considerados para cálculo do (PDG):
 Close-in obstacles not considered for procedure gradient (PDG):
 Árvore / Tree: a partir de / from THR31, AZM180, DIST 250m, ELEV 2655'.