

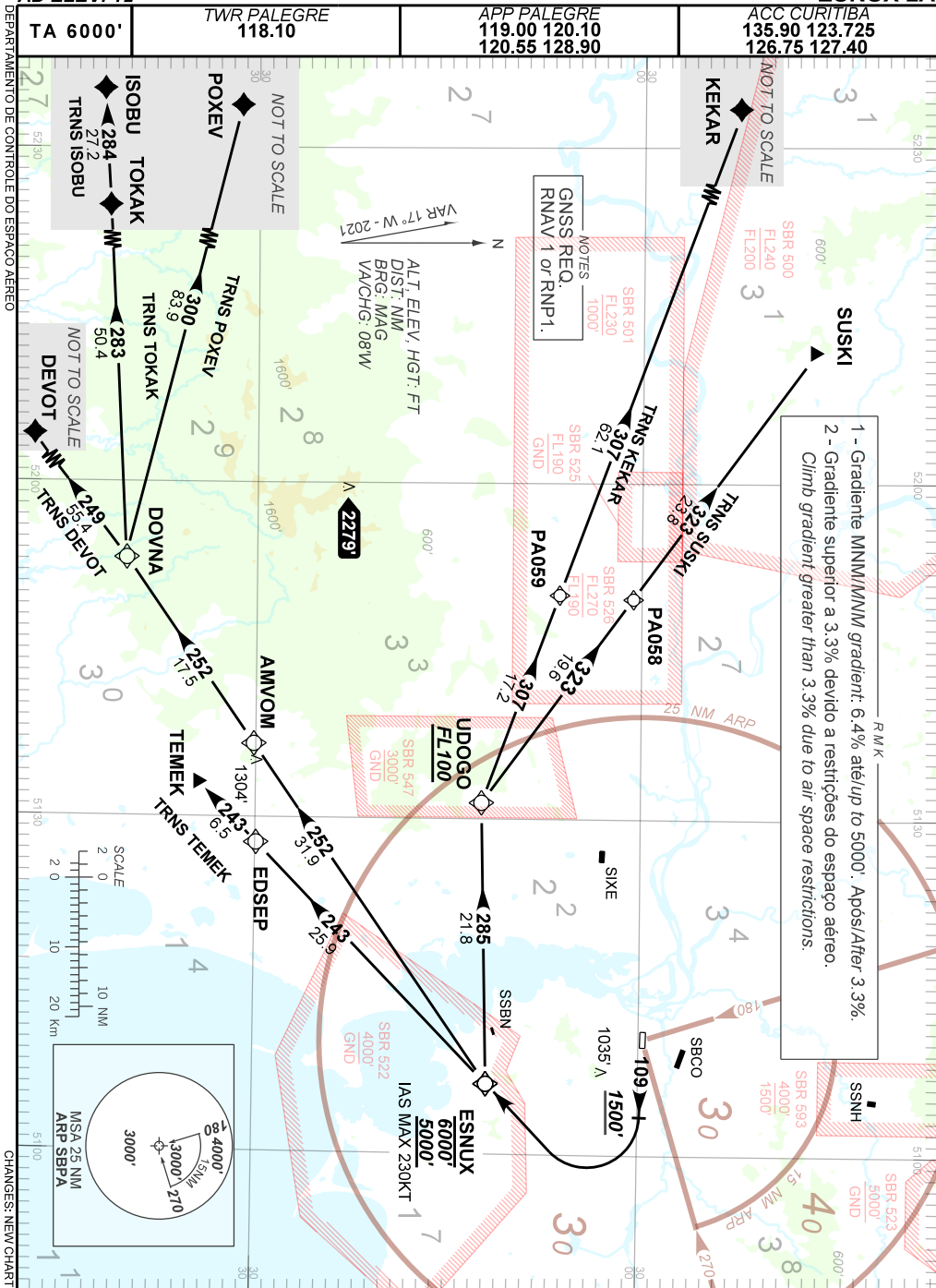
STANDARD DEPARTURE CHART
INSTRUMENT (SID)

PORTO ALEGRE / Salgado Filho, INTL (SBPA)

RWY 11

ESNUX 2A

AD ELEV: 12'



1 - Gradiente MIN/MIN gradient: 6.4% até up to 5000'. Após/After 3.3%.
2 - Gradiente superior a 3.3% devido a restrições do espaço aéreo.
Climb gradient greater than 3.3% due to air space restrictions.

NOTES
GNSR REQ.
RNAV 1 OR RNP-1.
SBR 501
FL230
SBR 525
FL190
SBR 528
FL270
SBR 529
FL270
SBR 530
FL270
SBR 531
FL270
SBR 532
FL270
SBR 533
FL270
SBR 534
FL270
SBR 535
FL270
SBR 536
FL270
SBR 537
FL270
SBR 538
FL270
SBR 539
FL270
SBR 540
FL270
SBR 541
FL270
SBR 542
FL270
SBR 543
FL270
SBR 544
FL270
SBR 545
FL270
SBR 546
FL270
SBR 547
FL270
SBR 548
FL270
SBR 549
FL270
SBR 550
FL270

ALT. ELEV. HGT. FT
DIST. NM
BRG. MAG
VA/CHG. 08W
VAR 17° W - 2021

2279'

