

STANDARD DEPARTURE CHART
INSTRUMENT (SID)

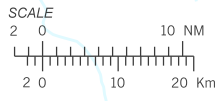
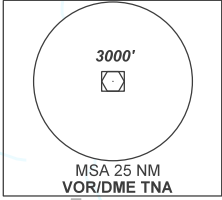
TERESINA / Senador Petrônio Portella (SBTE)

RWY 20
ETIRA 2C

AD ELEV: 220'

TA 4000'	ATIS 127.80	TWR TERESINA 118.80	APP TERESINA 119.60	ACC AMAZÔNICO 126.15 128.30 133.70	ACC RECIFE 125.15 135.25
----------	----------------	------------------------	------------------------	---------------------------------------	-----------------------------

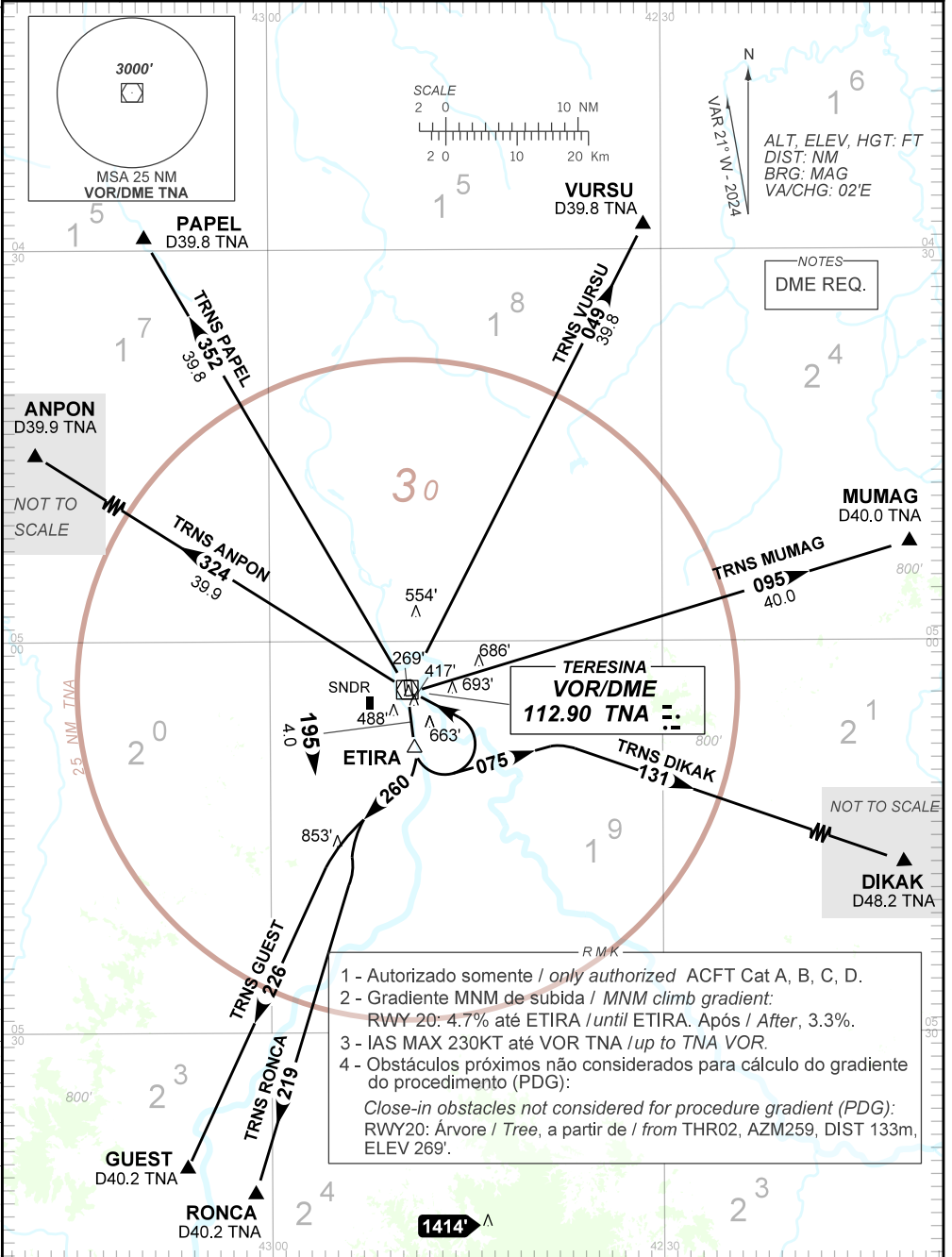
DEPARTAMENTO DE CONTROLE DO ESPAÇO AÉREO



N
VAR 21° W - 2024

ALT, ELEV, HGT: FT
DIST: NM
BRG: MAG
VA/CHG: 02'E

NOTES
DME REQ.



- 1 - Autorizado somente / only authorized ACFT Cat A, B, C, D.
- 2 - Gradiente MNM de subida / MNM climb gradient:
RWY 20: 4.7% até ETIRA / until ETIRA. Após / After, 3.3%.
- 3 - IAS MAX 230KT até VOR TNA / up to TNA VOR.
- 4 - Obstáculos próximos não considerados para cálculo do gradiente do procedimento (PDG):
Close-in obstacles not considered for procedure gradient (PDG):
RWY20: Árvore / Tree, a partir de / from THR02, AZM259, DIST 133m, ELEV 269'.

CHANGES: AMA, IDENT, OBST, PROC, VAR, WPT.