

INSTRUMENT APPROACH CHART (IAC) **SÃO PAULO / GARULHOS - Gov. André Franco Montoro, INTL (SBGR)**

AD ELEV: 2461'

ILS T RWY 28R

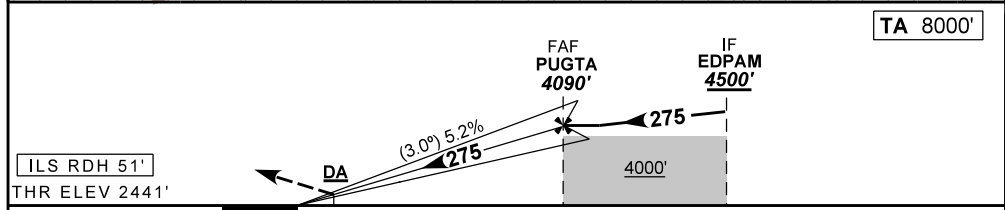
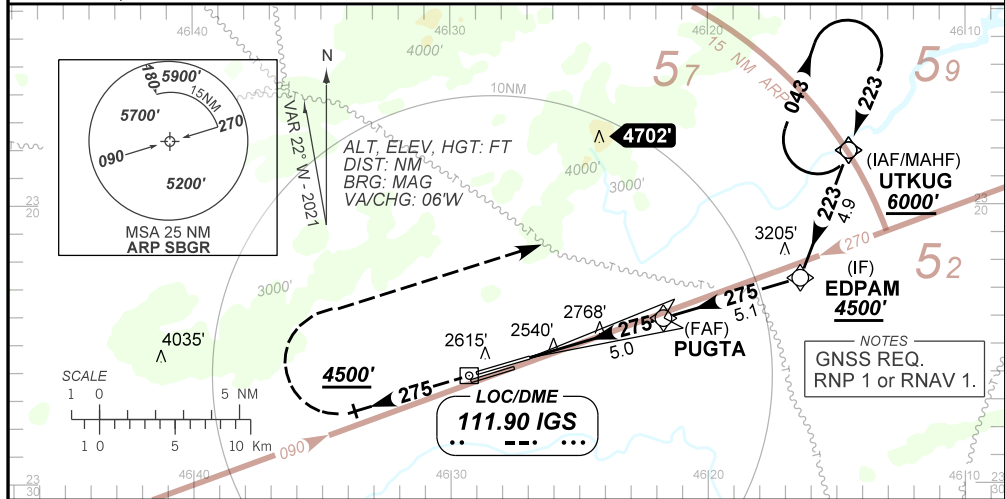
D-ATIS 127.75	APP SÃO PAULO 119.15 120.85 122.75 123.25 129.00 129.75	TWR GUARULHOS 118.40 132.75 135.20	GNDC GUARULHOS 121.70 126.90
-------------------------	---	--	--

LOC IGS 111.90 MHz	FINAL CRS 275°	FAF 4090'	CAT I DA / (OCH): REFER TO MNM	N/A
------------------------------	--------------------------	---------------------	--	------------

APCH Perdida: Subir para **6000'**. Manter rumo **275°** até cruzar **4500'**. Após, curvar à DIREITA direto UTKUG para espera.
 Missed APCH: Climb to **6000'**. Maintain course **275°** until passing **4500'**. Then, turn RIGHT direct to UTKUG for holding.

RMK:
 (*) RVR ALS 550m para aproximação utilizando Diretor de Voo, Piloto Automático ou Head-Up Display (HUD).
 (*) RVR ALS 550m for approach using a Flight Director, Autopilot or Head-Up Display (HUD).

ARREMETIDA VISUAL RWY 28L: Subir para **6000'**. Manter proa **275°** até **3400'**. Após, curvar à ESQUERDA proa **105°** e aguardar instruções ATC.
 VISUAL GO AROUND RWY 28L: Climb to **6000'**. Maintain heading **275°** until **3400'**. Then, turn LEFT heading **105°** and expect ATC instructions.



0.0	0.5	5.0	10.1	TO THR 28R (NM)
0.2	0.7	5.2	10.3	TO IGS (DME)

RWY 28R	0.5	2.0	3.0	4.0	PUGTA		KT	090	110	130	150	170	190
ALT	2641	3128	3447	3766	4090		FPM	500	600	700	800	900	1000
(HGT)	200	687	1006	1325	1649		FAF-MAPT				NIL		

STRAIGHT-IN	CAT	A	B	C	D	E
CAT I	DA / (OCH)	2641' / (200')				2666' / (225')
	ALS/NO ALS/ RVR ALS (m)	800 / 1200 / 700*				
CIRCLING	MDA / (OCH)	NA				
	VIS (m)	NA				

DEPARTAMENTO DE CONTROLE DO ESPAÇO AÉREO