

**INSTRUMENT APPROACH  
CHART (IAC)**

**NATAL / Campo Augusto Severo, MIL (SBNT)**

**AD ELEV: 169'**

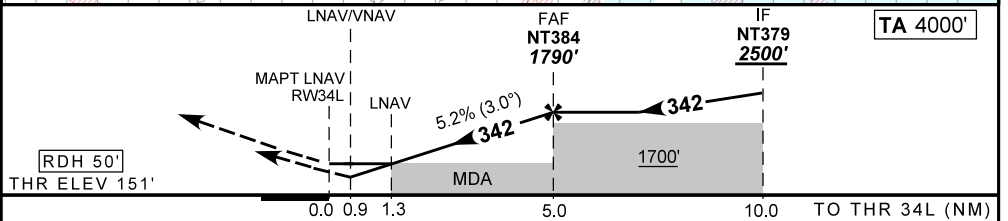
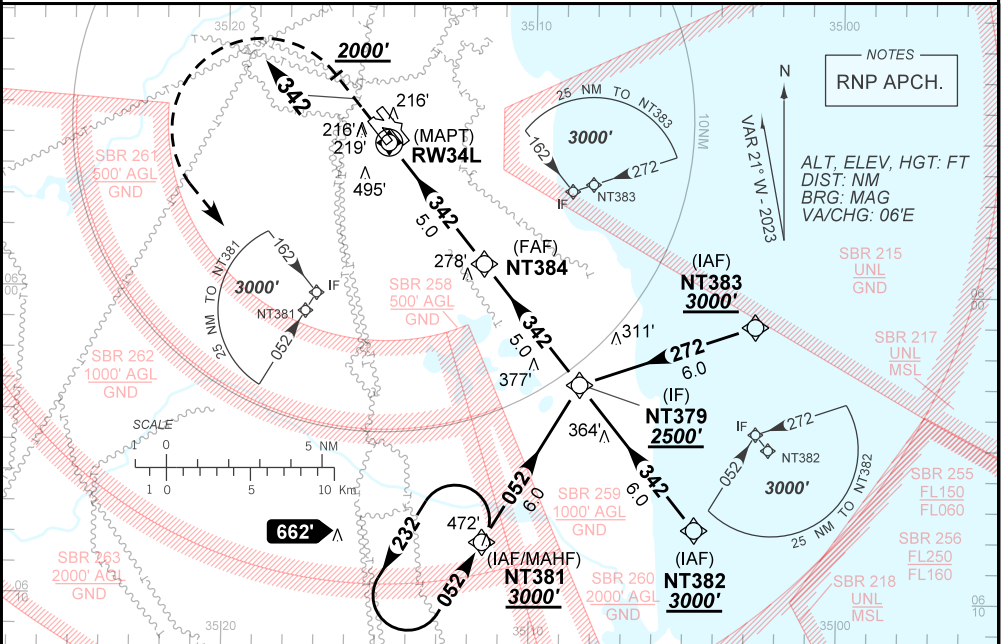
**RNP RWY 34L**

D-ATIS <b>132.65</b>	APP NATAL <b>119.30 119.65 120.65 129.80</b>	TWR NATAL <b>118.70 122.80</b>	GND NATAL <b>121.90</b>
TEMP LNAV/VNAV <b>MIN 0°C / MAX 50°C</b>	FINAL CRS <b>342°</b>	FAF: <b>1790'</b>	LNAV/VNAV DA / (OCH): <b>490' / (339')</b>
		LNAV MDA / (OCH): <b>610' / (460')</b>	

APCH Perdida: Subir para **3000'**. Manter proa **342** até cruzar **2000'**. Após, curvar à ESQUERDA direto NT381 para espera.

Missed APCH: Climb to **3000'**. Maintain heading **342** until passing **2000'**. After, turn LEFT direct to NT381 for holding.

DEPARTAMENTO DE CONTROLE DO ESPAÇO AÉREO



RWY34L	1.3	2.0	3.0	4.0	NT384	Ground Speed (KT)	090	110	130	150	170	190
ALT	610	838	1156	1475	1790	FPM	500	600	700	800	900	1000
(HGT)	460	687	1005	1324	1639	FAF-MAPT	NIL					

STRAIGHT-IN	CAT	A	B	C	D	E
	DA / (OCH)	490' / (339')				NA
LNAV/VNAV	ALS/NO ALS/ RVR ALS (m)	NIL / 1500 / NIL				NA
	MDA / (OCH)	610' / (460')				
LNAV	ALS/NO ALS/ RVR ALS (m)	NIL / 1600 / NIL		NIL / 2100 / NIL		
	MDA / (OCH)	NA				
CIRCLING						

CHANGES: AD ELEV. LAYOUT. PROC. TAA. VAR.