

INSTRUMENT APPROACH  
CHART (IAC)

RIO DE JANEIRO / Santa Cruz, MIL (SBSC)

AD ELEV: 10'

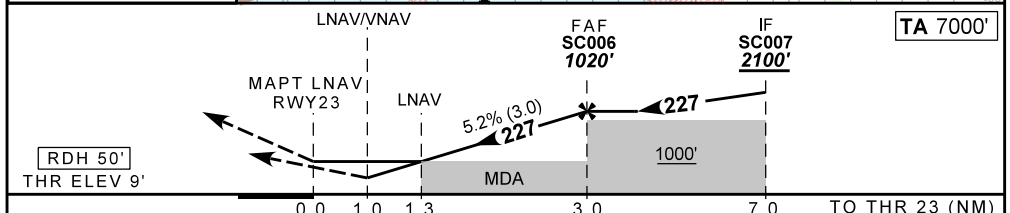
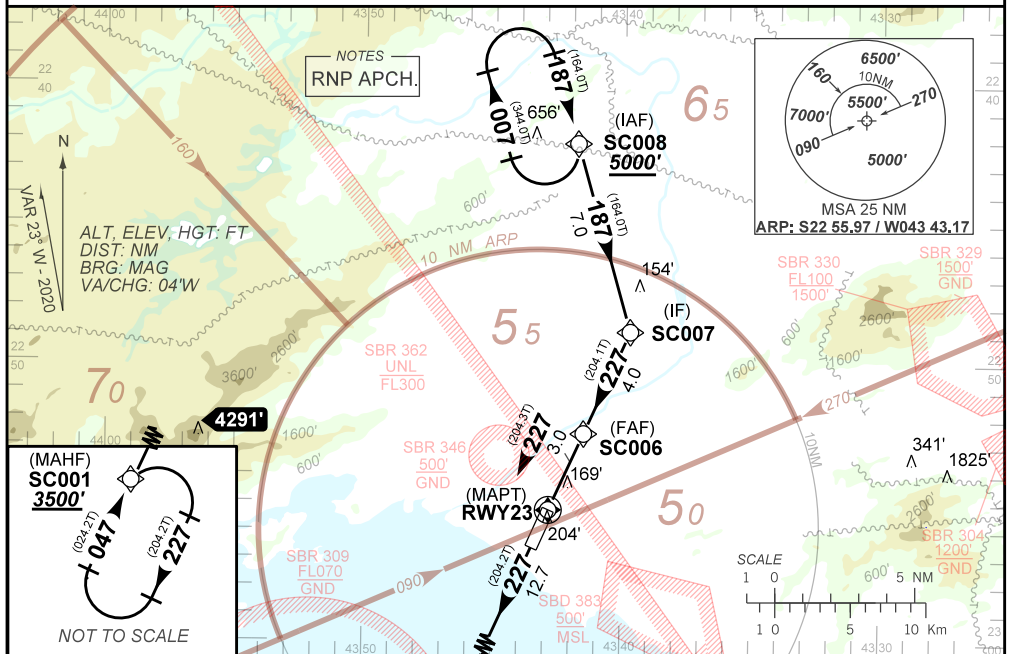
RNAV(GNSS) Z RWY 23

ATIS NIL	APP RIO 133.70 132.50 134.40 121.25 119.00 120.55 124.95 134.95 129.80 125.95 121.50	TWR SANTA CRUZ 118.80 122.90 121.50	GNDC SANTA CRUZ 121.80
-------------	--	--	---------------------------

N/A	FINAL CRS 227°	FAF: 1020'	LNAV/VNAV DA / (OCH): 384' / (375')	LNAV MDA / (OCH): 460' / (450')
-----	-------------------	---------------	--	------------------------------------

APCH Perdida: Subir para **3500'**, gradiente MNM de subida 4.0%. Manter rumo **227** até SC001 para espera.  
Missed APCH: Climb to **3500'**, MNM climb gradient 4.0%. Mantain course **227** up to SC001 for holding.

RMK: Para sistemas BARO-VNAV não compensados, procedimento LNAV/VNAV não autorizado abaixo de -20°C ou acima de 50°C.  
For uncompensated systems BARO-VNAV, LNAV/VNAV procedure not authorized below -20°C or above 50°C.



RWY23	1.3	2.0	SC006							
ALT	460	697	1020							
(HGT)	450	688	1011							
										NA

STRAIGHT-IN	CAT	A	B	C	D	E
	DA / (OCH)	384' / (375')				NA
LNAV/VNAV	ALS/NO ALS/ RVR ALS (m)	NIL / 1700 / NIL				NA
	MDA / (OCH)	460' / (450')				
LNAV	ALS/NO ALS/ RVR ALS (m)	NIL / 1600 / NIL		NIL / 2100 / NIL		
	MDA / (OCH)	NA				
CIRCLING	MDA / (OCH)	NA				
	VIS (m)	NA				

CHANGES: DEC. LAYOUT. FREC.