

INSTRUMENT APPROACH
CHART (IAC)

CURITIBA / Afonso Pena, INTL (SBCT)

VOR Z RWY 15

AD ELEV: 2989'

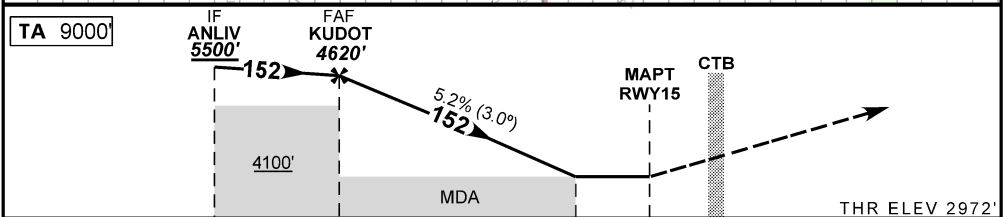
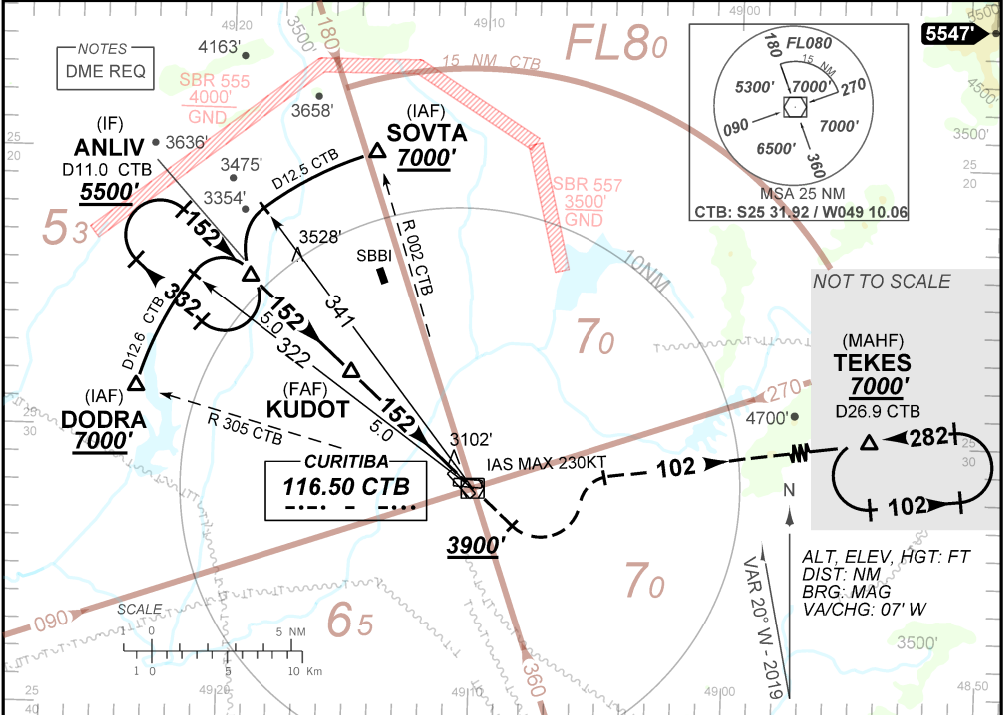
D-ATIS 127.80	APP CURITIBA 119.70 119.95 120.65 120.95 129.55 133.15 121.50	TWR CURITIBA 118.15 121.50	GNDC CURITIBA 121.90
------------------	---	-------------------------------	-------------------------

VOR CTB 116.50 MHZ	FINAL CRS 152°	FAF: 4620'	N/A	VOR MDA / (OCH): 3570' / (600')
-----------------------	-------------------	---------------	-----	------------------------------------

APCH perdida: 1) Subir para **7000'** RDL **152** CTB. Após passar **3900'**, curvar à ESQUERDA RDL **102** CTB para espera em TEKES. 2) IAS MAX na curva da aproximação perdida **230** KT.

Missed APCH: 1) Climb to **7000'**, **152** CTB RDL. After passing **3900'**, turn LEFT **102** CTB RDL for holding at TEKES. 2) Missed approach turn limited to **230** KT IAS maximum.

RMK: NIL



TO THR 15 (NM)	10.0	5.0	1.7	0.0	THR ELEV 2972'
TO CTB (DME)	11.0	6.0	2.7	1.0	

KUDOT	4.0	3.0	2.0	1.7	RWY15		KT	090	110	130	150	170	190
	4620	4296	3977	3659	3570	ALT	FPM	500	600	700	800	900	NA
	1648	1324	1005	687	598	(HGT)	FAF-MAPT 5NM	NA					

STRAIGHT-IN	CAT	A	B	C	D	E
VOR	MDA / (OCH)	3570' / (600')				NA
	ALS / NO ALS / RVR ALS (m)	800 / 1600 / NIL				
CIRCLING	MDA / (OCH)	2000 / 2700 / NIL				
	VIS (m)	NA				