

**INSTRUMENT APPROACH
CHART (IAC)**

PORTO ALEGRE / Salgado Filho, INTL (SBPA)

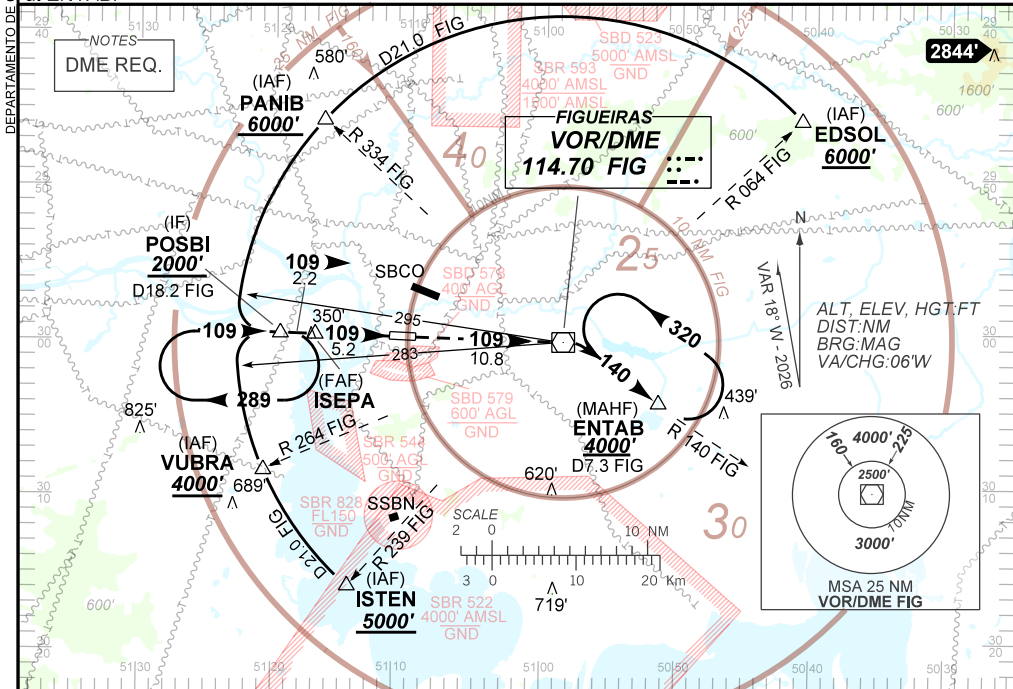
AD ELEV: 30'

VOR Z RWY 11

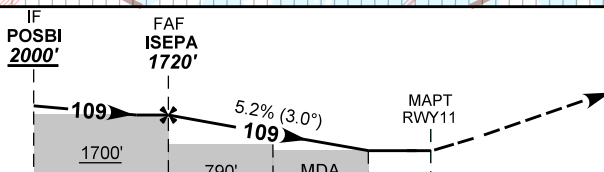
D-ATIS 132.35	APP PALEGRE 119.00 120.10 120.55 128.90	TWR PORTO ALEGRE 118.10	GND PORTO ALEGRE 121.90
VOR/DME FIG 114.70 MHz	FINAL CRS 109°	FAF: 1720'	VOR MDA / (OCH): 620' / (610')

APCH Perdida: Subir para **4000'**. Manter rumo **109** até VOR FIG. Após curvar à DIREITA, RDL **140** VOR FIG para espera em ENTAB.

Missed APCH: Climb to **4000'**. Maintain course **109** until FIG VOR. Turn RIGHT, **140** RDL FIG VOR for holding at ENTAB.



TA 10000'



THR ELEV 11'

TO THR 11 (NM)	7.4	5.2	2.3	1.8	0.0
TO FIG (DME)	18.2	16.0	13.1	12.6	10.8

	ISEPA	4.0	3.0	2.3	1.8	RWY 11	Ground Speed (KT)	090	110	130	150	170	190
	1720	1335	1016	794	620	ALT	FPM	500	600	700	800	900	NA
	1709	1324	1005	783	610	(HGT)	FAF-MAPT	NA					

STRAIGHT-IN	CAT	A	B	C	D	E
VOR	MDA / (OCH)	620' / (610')				
	ALS/NO ALS/ RVR ALS (m)	NIL / 1600 / NIL		NIL / 2800 / NIL		
CIRCLING	MDA / (OCH)	NA				
	VIS (m)	NA				

CHANGES: SDF, TA, VAR.