

**INSTRUMENT APPROACH
CHART (IAC)**

SÃO GONÇALO DO AMARANTE / Gov. Aluizio Alves, INTL (SBSG)

AD ELEV: 273'

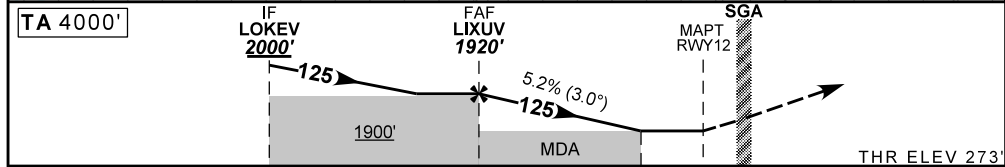
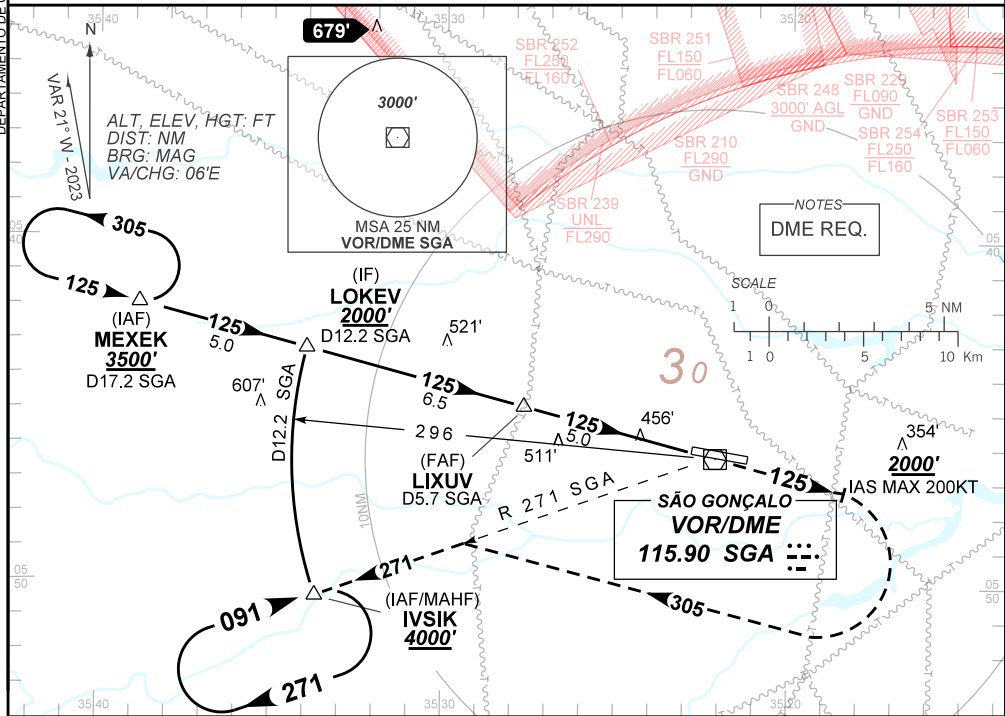
VOR RWY 12

ATIS 127.60	APP NATAL 119.30 119.65 120.65 129.80	TWR SÃO GONÇALO 118.20 118.85	GNDCL SÃO GONÇALO 121.70
-----------------------	---	---	------------------------------------

VOR SGA 115.90 MHz	FINAL CRS 125°	FAF: 1920'	N/A	VOR MDA / (OCH): 760' / (490')
------------------------------	--------------------------	----------------------	-----	--

APCH Perdida: 1) Subir para **4000'**. Manter RDL **125** do VOR SGA até **2000'**. Após, curvar à DIREITA proa **305** para interceptar RDL 271 do VOR SGA até IVSIK para espera. 2) Proibido rebloqueio do VOR SGA.
Missed APCH: 1) Climb to **4000'**. Maintain **125** RDL SGA VOR until **2000'**. After, turn RIGHT heading **305** to intercept 271 RDL SGA VOR until IVSIK for holding. 2) Overflight of SGA VOR is forbidden.

DEPARTAMENTO DE CONTROLE DO ESPAÇO AÉREO



TO THR 12 (NM)	11.5	5.0	1.4	0.0
TO SGA (DME)	12.2	5.7	2.1	0.7

	LIXUV	4.0	3.0	2.0	1.4	RWY12	Ground Speed (KT)	90	110	130	150	170	190
	1920	1598	1279	961	760	ALT	FPM	500	600	700	800	900	1000
	1647	1325	1006	688	490	(HGT)	FAF-MAPT	NA					

STRAIGHT-IN	CAT	A	B	C	D	E
	MDA / (OCH)	760' / (490')				
VOR	ALS/NO ALS/ RVR ALS (m)	900 / 1600 / 850			1500 / 2300 / 1400	
	MDA / (OCH)	NA				
CIRCLING	MDA / (OCH)	NA				
	VIS (m)	NA				

CHANGES: LAYOUT.