

**INSTRUMENT APPROACH
CHART (IAC)**

CANOAS / Campo Nossa Senhora de Fátima, MIL (SBCO)

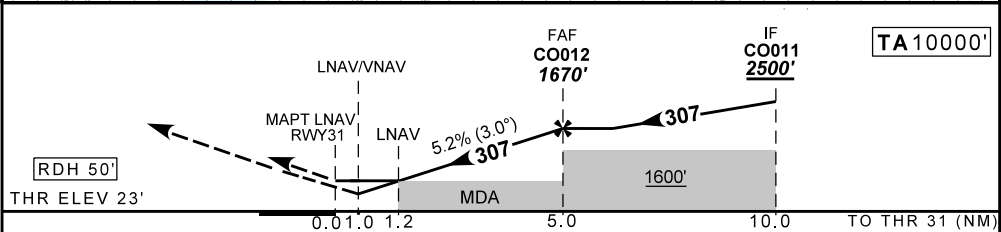
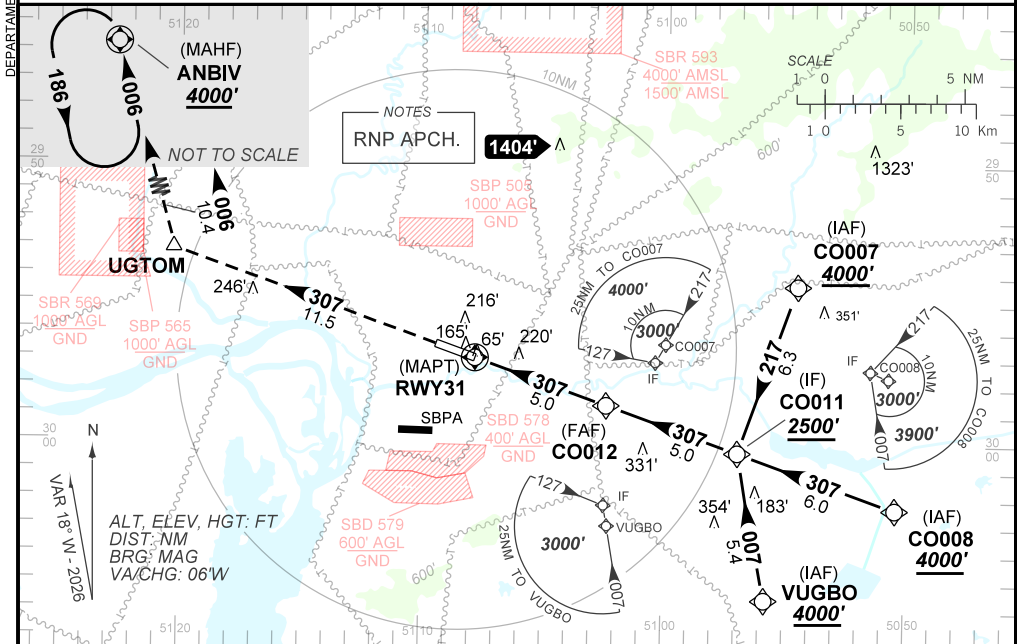
AD ELEV: 26'

RNP Z RWY 31

ATIS NIL	APP PALEGRE 119.00 120.10 120.55 128.90			TWR CANOAS 118.50 122.80 (MIL)	GNDC CANOAS 121.70
TEMP LNAV/VNAV MIN -10°C / MAX 50°C	FINAL CRS 307°	FAF: 1670'	LNAV/VNAV DA / (OCH): 383' / (360')	LNAV MDA / (OCH): 460' / (440')	

APCH Perdida: Subir para **4000'**, gradiente MNM 3.9%. Manter rumo **307** até UGTOM. Após, curvar à DIREITA rumo **006** até ANBIV para espera.

Missed APCH: Climb to **4000'**, MNM gradient 3.9%. Maintain course **307** until UGTOM. After, turn RIGHT, course **006** until ANBIV for holding.



RWY31	1.2	2.0	3.0	4.0	CO012	Ground Speed (KT)	090	110	130	150	170	190
ALT	460	710	1028	1347	1670	FPM	500	600	700	800	900	1000
(HGT)	440	687	1005	1324	1647	FAF-MAPT	NA					

STRAIGHT-IN	CAT	A	B	C	D	E
LNAV/VNAV	DA / (OCH)	383' / (360')				NA
Missed APCH	ALS/NO ALS/ RVR ALS (m)	NIL / 1600 / NIL				
LNAV	MDA / (OCH)	460' / (440')				
Missed APCH	ALS/NO ALS/ RVR ALS (m)	NIL / 1600 / NIL		NIL / 2000 / NIL		
CIRCLING	MDA / (OCH)	NA				
	VIS (m)					

AIRAC AMDT 2604A1 16 APR 26

SBCO_IAC_01C 1/1
IAC RNP Z RWY 31

DEPARTAMENTO DE CONTROLE DO ESPAÇO AÉREO

CHANGES: DA, LAYOUT, OBST, TA, VAR