

**INSTRUMENT APPROACH  
CHART (IAC)**

**NAVEGANTES / Ministro Victor Konder, INTL (SBNF)**

**RNP Y RWY 26 (AR)**

(CAT A,B,C)

**AD ELEV: 18'**

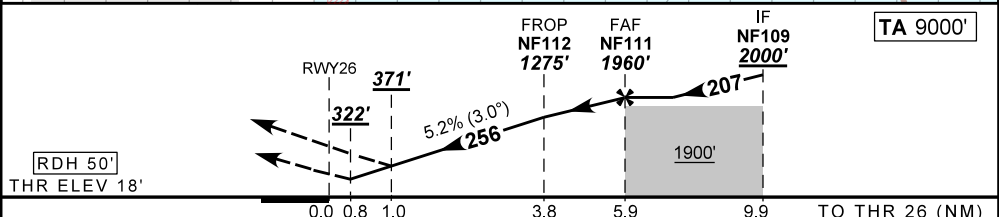
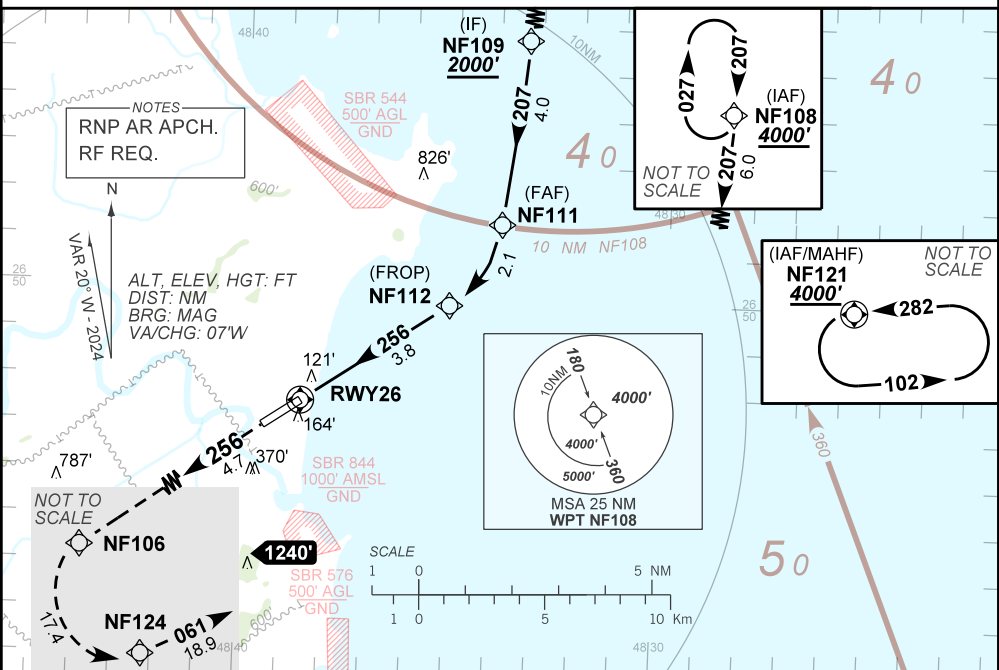
ATIS <b>127.625</b>	APP FLORIANÓPOLIS <b>119.50 119.65 128.95 129.45 120.325</b>	TWR NAVEGANTES <b>118.20</b>	GNDC <b>NIL</b>
------------------------	---	---------------------------------	--------------------

TEMP LNAV/VNAV <b>MIN 0°C / MAX 48°C</b>	FINAL CRS <b>256°</b>	FAF: <b>1960'</b>	RNP 0.3 DA / (OCH): <b>REFER TO MNM</b>	N/A
---	--------------------------	----------------------	--	-----

APCH Perdida: Subir para **4000'** gradiente (\*VER MNM). Manter o rumo **256** até NF106. Após, curvar à ESQUERDA até NF124. Após, rumo **061** para espera em NF121.

Missed APCH: Climb to **4000'** gradient (\*REFER TO MNM). Maintain course **256** until NF106. After, turn LEFT until NF124. After, course **061** for holding at NF121.

DEPARTAMENTO DE CONTROLE DO ESPAÇO AÉREO



RWY26	0.8	1.0	2.0	3.0	NF112	NF111	Ground Speed (KT)	090	110	130	150	170	190
ALT	322	371	705	1023	1275	1960	FPM	500	600	700	800	NA	NA
(HGT)	304	353	687	1005	1257	1944	FAF-MAPT	NA					

STRAIGHT-IN	CAT	A	B	C	D	E
RNP 0.3	DA / (OCH)	322' / (304')			NA	
Missed APCH Climb Gradient 3.5%	ALS/NO ALS/ RVR ALS (m)	NIL / 1400 / NIL			NA	
RNP 0.3	DA / (OCH)	371' / (353')			NA	
	ALS/NO ALS/ RVR ALS (m)	NIL / 1600 / NIL			NA	

**AUTORIZAÇÃO ESPECIAL PARA AERONAVE E TRIPULAÇÃO REQUERIDA  
SPECIAL AUTHORIZATION FOR AIRCRAFT AND CREW REQUIRED**

CHANGES: ALT, DA, HGT.