

**INSTRUMENT APPROACH  
CHART (IAC)**

**CACOAL / Cacoal (SSKW)**

**AD ELEV: 797'**

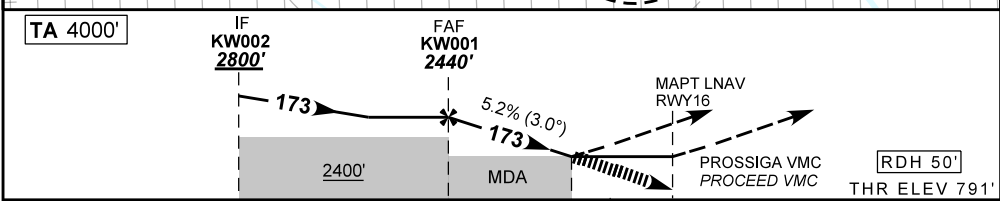
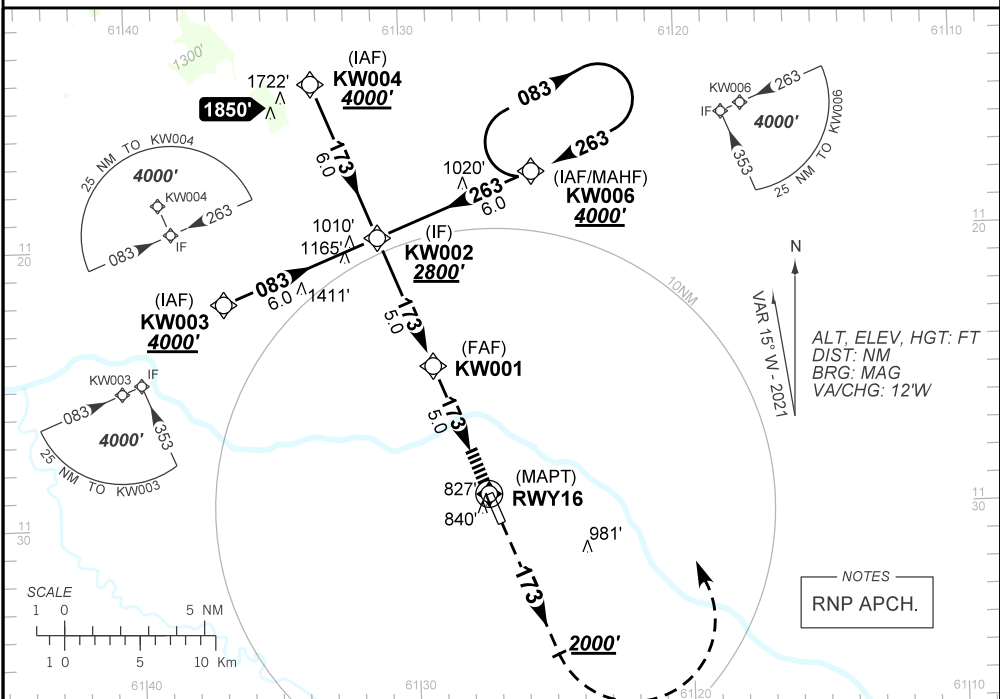
**RNP RWY 16**

ATIS <b>NIL</b>	APP <b>NIL</b>	AFIS CACOAL <b>131.10</b>	GNDC <b>NIL</b>
TEMP LNAV/VNAV <b>MIN -20°C / MAX 50°C</b>	FINAL CRS <b>173°</b>	FAF: <b>2440'</b>	LNAV/VNAV DA / (OCH): <b>1797' / (1000')</b>
LNAV MDA / (OCH): <b>1800' / (1000')</b>			

APCH Perdida: Subir para **4000'**. Manter rumo **173** até **2000'**. Após, curvar à ESQUERDA direto KW006 para espera.

Missed APCH: Climb to **4000'**. Mantain course **173** until **2000'**. After, turn LEFT direct to KW006 for holding.

DEPARTAMENTO DE CONTROLE DO ESPAÇO AÉREO



TO THR 16 (NM) 10.0 5.0 3.0 0.0

				KW001	4.0	3.0	RWY16	Ground Speed (KT)	090	110	130	150	170	190
				2440	2115	1800	ALT	FPM	500	600	700	800	900	NA
				1649	1324	1000	(HGT)	FAF-MAPT	NIL					

STRAIGHT-IN	CAT	A	B	C	D	E
	LNAV/VNAV	DA / (OCH)	1800' / (1000')			NA
LNAV	ALS/NO ALS/ RVR ALS (m)	NIL / 5000 / NIL				
	MDA / (OCH)	1797' / (1000')				
CIRCLING	ALS/NO ALS/ RVR ALS (m)	NIL / 5000 / NIL				
	MDA / (OCH)	NA				
VIS (m)						

CHANGES: NEW CHART.