

**INSTRUMENT APPROACH  
CHART (IAC)**

**NATAL / Campo Augusto Severo, MIL (SBNT)**

**AD ELEV: 169'**

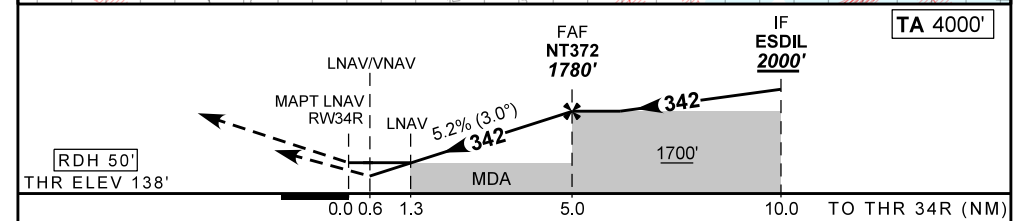
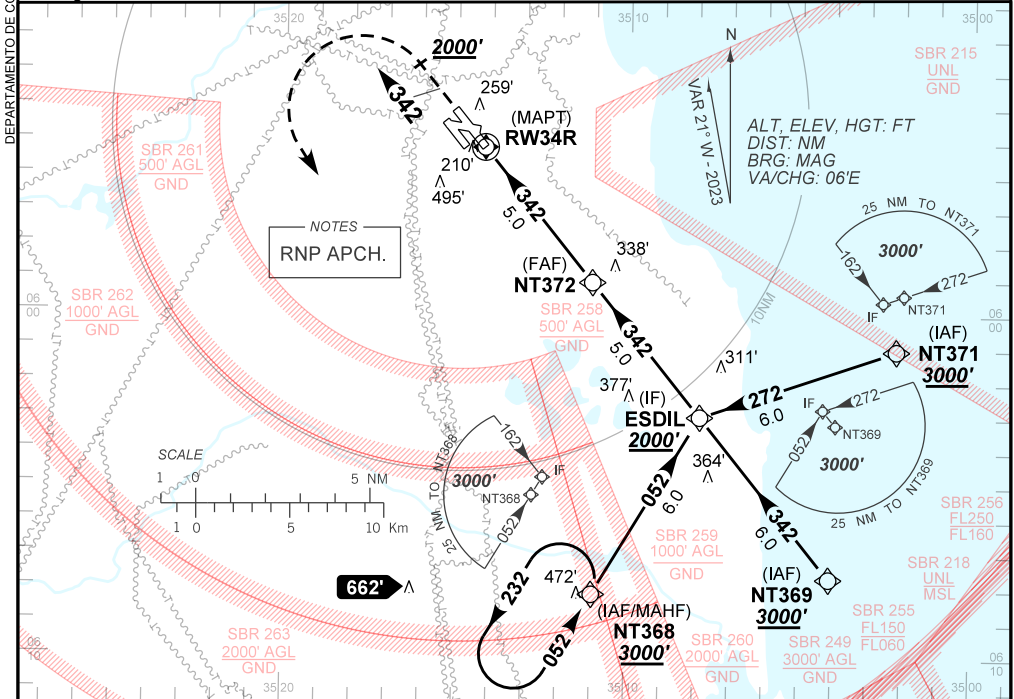
**RNP RWY 34R**

D-ATIS <b>132.65</b>	APP NATAL <b>119.30 119.65 120.65 129.80</b>	TWR NATAL <b>118.70 122.80</b>	GNDC NATAL <b>121.90</b>
-------------------------	---	-----------------------------------	-----------------------------

TEMP LNAV/VNAV <b>MIN 0°C / MAX 50°C</b>	FINAL CRS <b>342°</b>	FAF: <b>1780'</b>	LNAV/VNAV DA / (OCH): <b>388' / (250')</b>	LNAV MDA / (OCH): <b>590' / (460')</b>
---	--------------------------	----------------------	---	---

APCH Perdida: Subir para **3000'**. Manter proa **342** até cruzar **2000'**. Após curva a ESQUERDA direto NT368 para espera.

missed APCH: Climb to **3000'**. Maintain heading **342** until passing **2000'**. After, turn LEFT direct NT368 for holding.



RW34R	1.3	2.0	3.0	4.0	NT372		Ground Speed (KT)	090	110	130	150	170	190
ALT	590	825	1143	1462	1780		FPM	500	600	700	800	900	1000
(HGT)	460	687	1005	1324	1642		FAF-MAPT	NIL					

STRAIGHT-IN	CAT	A	B	C	D	E
LNAV/VNAV	DA / (OCH)	388' / (250')				NA
	ALS/NO ALS/ RVR (m)	NIL / 1300 / NIL				
LNAV	MDA / (OCH)	590' / (460')				
	ALS/NO ALS/ RVR (m)	NIL / 1200 / NIL		NIL / 1700 / NIL		
CIRCLING	MDA / (OCH)	NA				
	VIS (m)					

CHANGES: AD ELEV. LAYOUT. PROC. VAR.

DEPARTAMENTO DE CONTROLE DO ESPACAO AEREO