

**INSTRUMENT APPROACH  
CHART (IAC)**

**RIO DE JANEIRO / Galeão - Antônio Carlos Jobim, INTL (SBGL)**

**ILS R or LOC R RWY 15**

**AD ELEV: 28'**

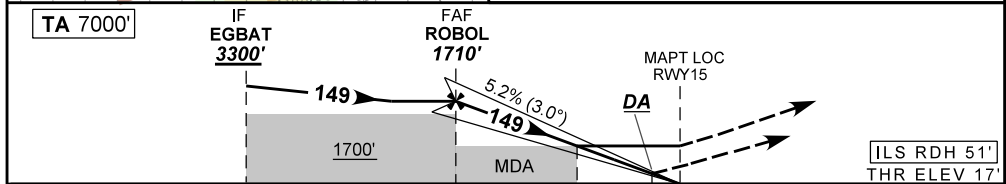
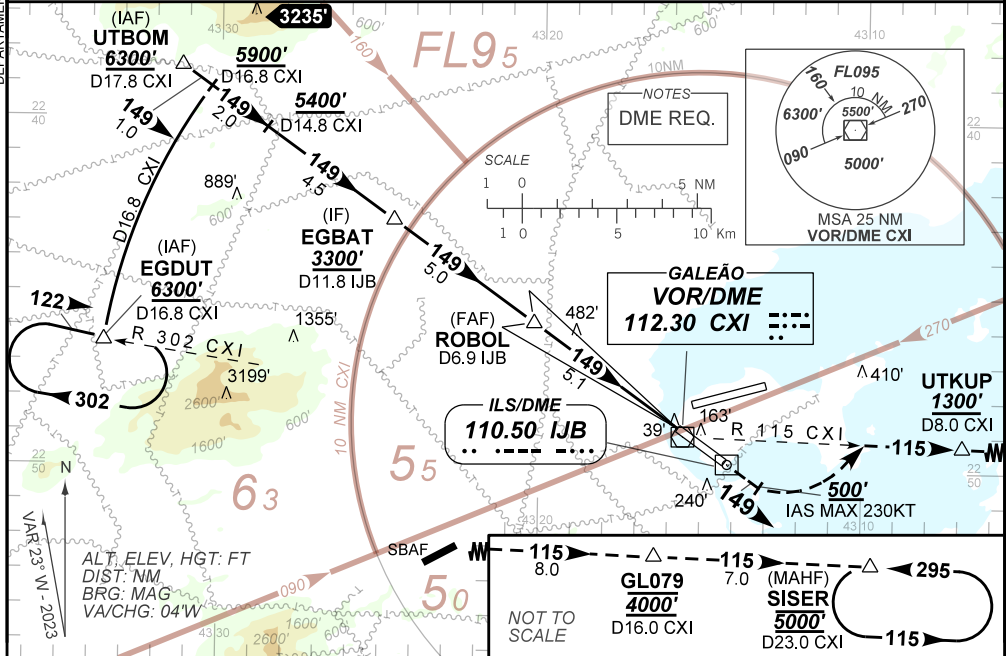
D-ATIS <b>127.60</b>	APP RIO <b>119.35 121.25 124.95 125.95 126.20 128.90 129.80 133.30 134.40 134.95</b>	TWR GALEÃO <b>118.00 118.20</b>	GNDC GALEÃO <b>121.65 128.35</b>
-------------------------	---	------------------------------------	-------------------------------------

ILS/DME IJB <b>110.50 MHz</b>	FINAL CRS <b>149°</b>	FAF: <b>1710'</b>	CAT I DA / (OCH): <b>REFER TO MNM</b>	LOC MDA / (OCH): <b>730' / (720')</b>
----------------------------------	--------------------------	----------------------	--	--

APCH Perdida: Subir para **5000'**. Manter rumo **149** até **500'**. Curvar à ESQUERDA, RDL **115** CXI VOR até UTKUP. Após, manter RDL **115** VOR CXI até SISER para espera.

Missed APCH: Climb to **5000'**. Maintain course **149** until **500'**. Turn LEFT **115** RDL CXI VOR up to UTKUP. After, maintain **115** RDL CXI VOR up to SISER for holding.

RMK: (\*) VIS RVR ALS 550m para aproximação utilizando Diretor de Voo, Piloto Automático ou Head-Up Display (HUD). (\*) VIS RVR ALS 550m for approach using a Flight Director, Autopilot or Head-Up Display (HUD).



TO THR 15 (NM)	10.1	5.1	2.1	0.4	0.0
TO IJB (DME)	11.9	6.9	3.9	2.2	1.8

	ROBOL	4.0	3.0	2.1	1.0	RWY15	Ground Speed (KT)	090	110	130	150	170	190
		1710	1342	1023	730	386	FPM	500	600	700	800	900	1000
		1693	1325	1006	720	369	FAF-MAPT	NA					

STRAIGHT-IN	CAT	A	B	C	D	E
	DA / (OCH)	217' / (200')				259' / (242')
CAT I	ALS/NO ALS/ RVR ALS (m)	800 / 1200 / 700 (*)				800 / 1300 / 700
	MDA / (OCH)	730' / (720')				
LOC	ALS/NO ALS/ RVR ALS (m)	800 / 1600 / 700			2600 / 3300 / NIL	
	MDA / (OCH)	NA				
CIRCLING	MDA / (OCH)	NA				
	VIS (m)	NA				

DEPARTAMENTO DE CONTROLE DO ESPAÇO AÉREO

CHANGES: MNM OPR. LAYOUT.