

**INSTRUMENT APPROACH
CHART (IAC)**

SANTARÉM / Maestro Wilson Fonseca, INTL (SBSN)

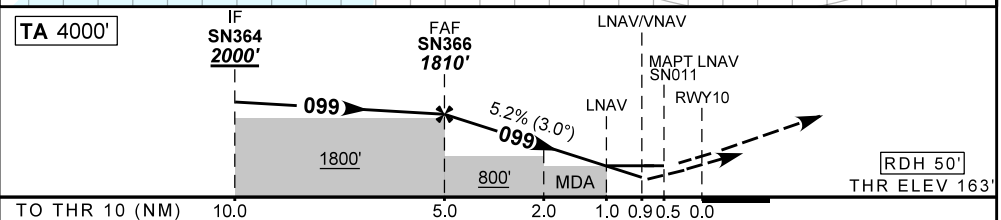
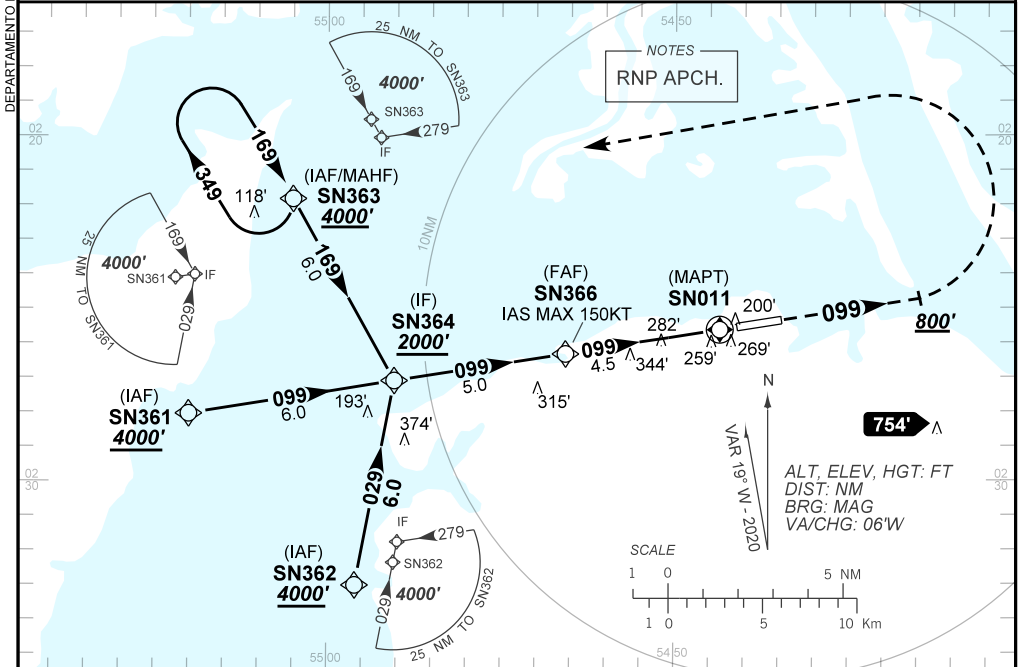
AD ELEV: 197'

RNP RWY 10

ATIS NIL	APP SANTARÉM 119.30	TWR SANTARÉM 118.10	AFIS SANTARÉM 119.30	GNDC NIL
TEMP LNAV/VNAV MIN 10°C / MAX 50°C	FINAL CRS 099°	FAF: 1810'	LNAV/VNAV DA / (OCH): 513' / (350')	LNAV MDA / (OCH): 520' / (360')

APCH Perdida: 1) Subir para **4000'**. Manter proa **099** até **800'**. Após, curvar à ESQUERDA direto SN363 para espera. 2) IAS MAX 150KT até **800'**.

Missed APCH: 1) Climb to **4000'**. Maintain heading **099** until **800'**. After, turn LEFT direct SN363 for holding. 2) IAS MAX 150KT until **800'**.



	SN366	4.0	3.0	2.0	1.0	RWY10	Ground Speed (KT)	090	110	130	150	170	190
	1810	1487	1168	850	520	ALT	FPM	500	600	700	800	900	NA
	1647	1324	1005	687	360	(HGT)	FAF-MAPT	NA					

STRAIGHT-IN	CAT	A	B	C	D	E	
	DA / (OCH)	513' / (350')					NA
LNAV/VNAV	ALS/NO ALS/ RVR ALS (m)	NIL / 1600 / NIL					
	MDA / (OCH)	520' / (360')					
LNAV	ALS/NO ALS/ RVR ALS (m)	NIL / 1600 / NIL					
	MDA / (OCH)	NA					
CIRCLING	MDA / (OCH)	NA					
	VIS (m)	NA					

CHANGES: LAYOUT.