

**INSTRUMENT APPROACH
CHART (IAC)**

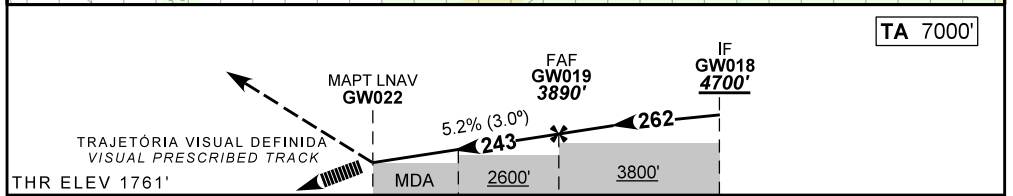
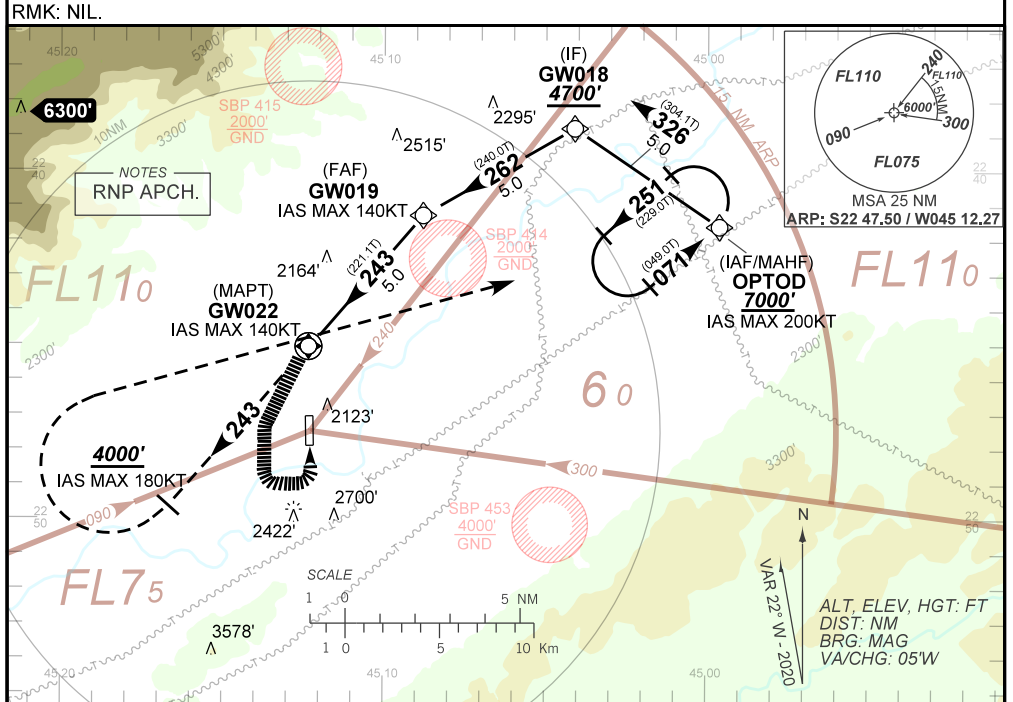
GUARATINGUETÁ / Guaratinguetá (SBGW)

AD ELEV: 1761'

RNAV(GNSS) B RWY 02

ATIS NIL	APP GUARÁ 120.15		TWR GUARÁ 118.15	GNDC NIL
N/A	FINAL CRS 243°	FAF: 3890'	N/A	N/A

APCH Perdida: 1) Subir para **7000'**. Manter rumo **243** até cruzar **4000'**. Então, curvar à DIREITA direto OPTOD para espera. 2) Gradiente MNM 5.0% até 6000'. Após, 2.5%.
Missed APCH: 1) Climb to **7000'**. Maintain course **243** until passing **4000'**. Then, turn RIGHT direct to OPTOD for holding. 2) MNM gradient 5.0% until 6000'. After, 2.5%.



THR ELEV 1761'	0.0	2.0	5.0	10.0	TO MAPT (NM)
----------------	-----	-----	-----	------	--------------

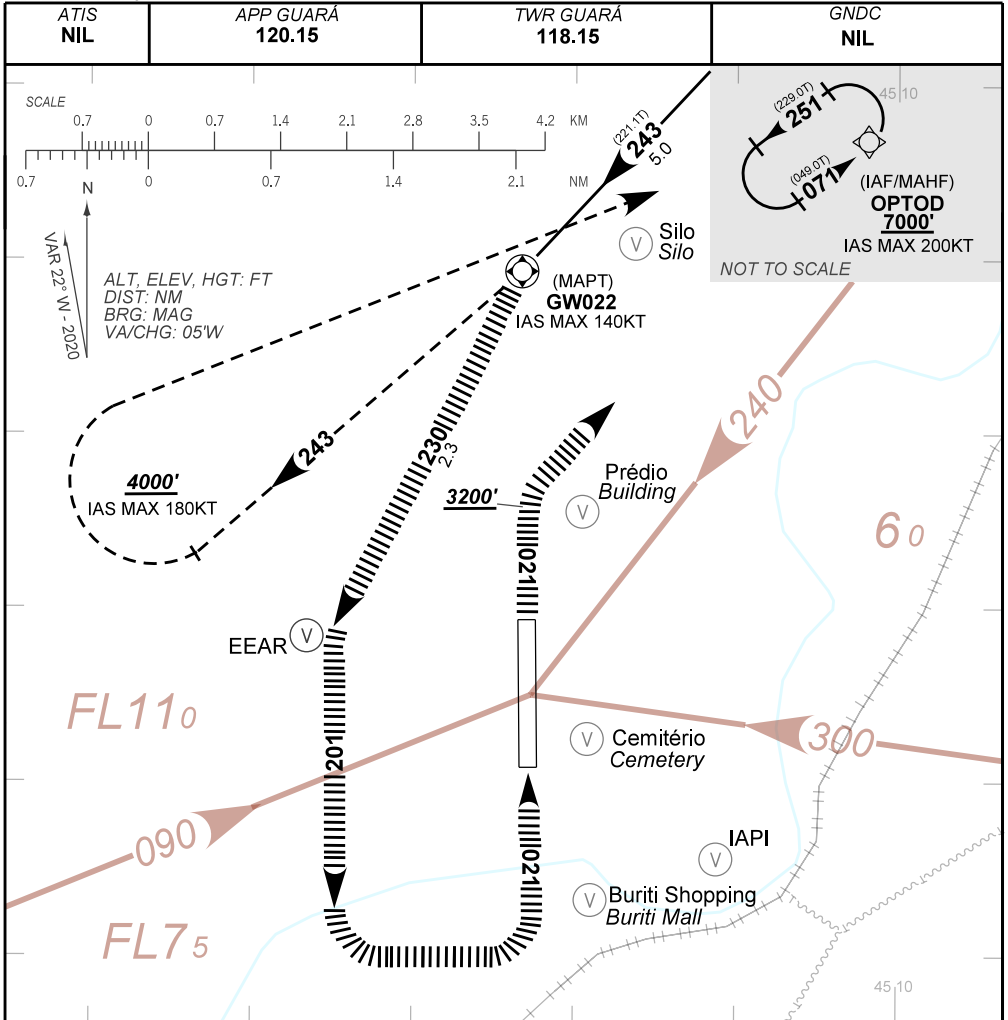
MAPT	GW022	1.0	2.0	3.0	4.0	GW019	KT	090	110	130	150	170	190
ALT	2400	2718	3036	3355	3673	3890	FPM	500	600	700	800	NA	NA
(HGT)	640	957	1275	1594	1912	2129	FAF-MAPT	NA					

STRAIGHT-IN	CAT	A	B	C	D	E
	MDA / (OCH)	NA				
LNAV	ALS/NO ALS/ RVR ALS (m)	NA				
CIRCLING	MDA / (OCH)	2400' / (640')			NA	
	VIS (m)	1900	2800	3700	NA	

CHANGES: MSA PROC.

AD ELEV: 1761'

RNAV(GNSS) B RWY 02



**TRAJETÓRIA VISUAL DEFINIDA RWY 02
VISUAL PRESCRIBED TRACK RWY 02**

- 1) O procedimento deverá ser autorizado pelo APP GUARÁ durante a aproximação final e aproximação perdida.
Procedure must be authorized by GUARÁ APP on final and missed approaches.
- 2) O piloto deverá estar em contato visual e prover sua própria separação com as referências visuais:
Silo (S22 44.90 W045 11.62), Prédio (S22 46.44 W045 11.95) e a EEAR (S22:47.16 W045:13.66).
The pilot should have visual contact and provide his own separation with the visual references: Silo (S22 44.90 W045 11.62), Building (S22 46.44 W045 11.95) and EEAR (S22:47.16 W045:13.66).
- 3) Em caso de aproximação perdida durante a manobra para circular: Subir imediatamente para 7000' no rumo 021. Após passar 3200', voar direto OPTOD para espera.
In case of go around during the circling maneuvering: Climb immediately to 7000' on course 021. After passing 3200', fly direct to OPTOD for holding.
- 4) Perna base RWY02 limitada ao setor norte da rodovia Dutra. Caso não seja possível, informar ao APP/TWR Guará.
RWY02 base leg limited to the north sector of the Dutra highway. If it is not possible, inform Guará APP / TWR .
- 5) Observar AIC sobre circulação visual na Terminal São Paulo. (REA Mike).
See AIC about visual flight in São Paulo Terminal Area. (Mike REA).

CHANGES: MSA. PROC.