

**INSTRUMENT APPROACH  
CHART (IAC)**

**AD ELEV: 281'**

**USO EXCLUSIVO ACFT MILITARES  
MILITARY ACFT ONLY**

**CACEQUI / Saicã, MIL (SSCQ)**

**RNP 210**

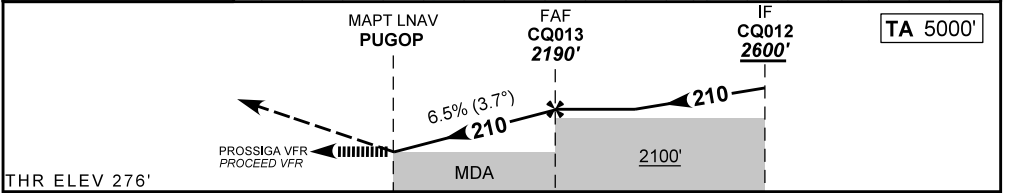
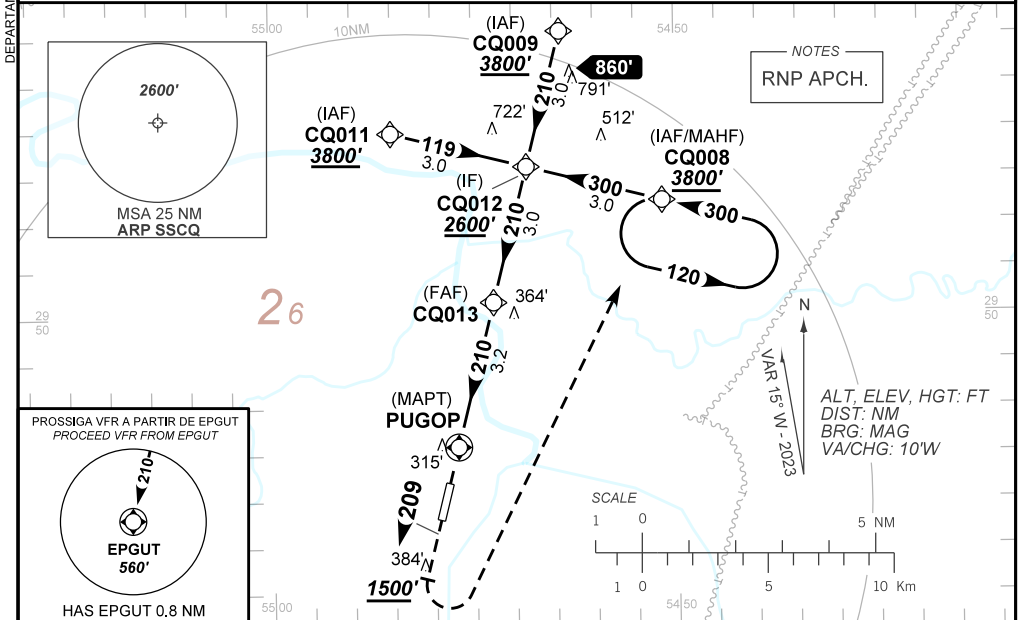
**PINS - (CAT H)**

ATIS SANTA MARIA <b>127.75</b>	APP SANTA MARIA <b>119.35 121.35</b>		TWR <b>NIL</b>	GNDC <b>NIL</b>
<b>N/A</b>	FINAL CRS <b>210°</b>	FAF: <b>2190'</b>	<b>N/A</b>	
			LNAV RASS (SBSM) MDA / (OCH): <b>920' / (640')</b>	

APCH Perdida: Subir para **3800'**. Manter proa **209** até **1500'**. Após, curvar à ESQUERDA direto CQ008 para espera.

Missed APCH: Climb to **3800'**. Maintain heading **209** until **1500'**. After, turn LEFT direct CQ008 for holding.

RMK: Informações complementares no verso.  
See reverse side for additional information.



MAPT LNAV PUGOP	FAF CQ013 2190'	IF CQ012 2600'	<b>TA 5000'</b>
THR ELEV 276'			
0.0	0.0	3.2	6.2
	0.8	4.0	7.0
			TO MAPT (NM)
			TO THR 20 (NM)

MAPT	PUGOP	1.0	2.0	CQ013		Ground Speed (KT)	060	070	080	090	100	110
ALT	920	1315	1710	2190		FPM	390	450	520	580	NA	NA
(HGT)						FAF-MAPT				NIL		

STRAIGHT-IN	CAT	H
LNAV RASS (SBSM)	MDA / (OCH)	<b>920' / (640')</b>
	VIS (m)	1500
CIRCLING	MDA / (OCH)	NA
	VIS (m)	

CHANGES: AD ELEV, THR INFO

DEPARTAMENTO DE CONTROLE DO ESPAÇO AÉREO

— R M K —

- 1- Requerido FPL "Y" com mudança de regras de voo para VFR em PUGOP.  
*FPL "Y" required with flight rules change to VFR at PUGOP.*
- 2- Procedimento exclusivo para helicópteros.  
*Exclusive procedure for helicopters.*
- 3 - É de responsabilidade do piloto em comando a separação com obstáculos e terreno entre o PUGOP e a THR20.  
*It is the responsibility of the pilot in command for separation with obstacles and terrain between PUGOP and THR20.*
- 4- Utilizar o ajuste-altímetro de SBSM.  
*Use altimeter setting from SBSM.*

CHANGES: AD, ELEV, THR, INFO.