

**INSTRUMENT APPROACH CHART (IAC)**

**RIO DE JANEIRO / GALEÃO - Antônio Carlos Jobim, INTL (SBGL)**

**RNP Y RWY 10**

**AD ELEV: 28'**

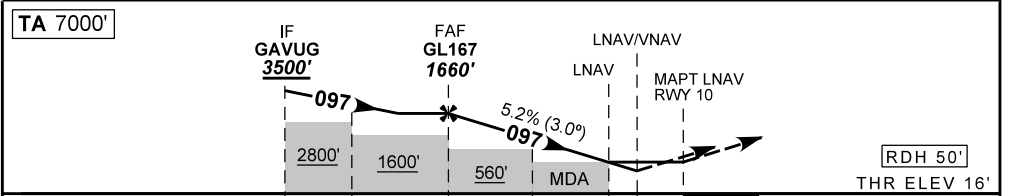
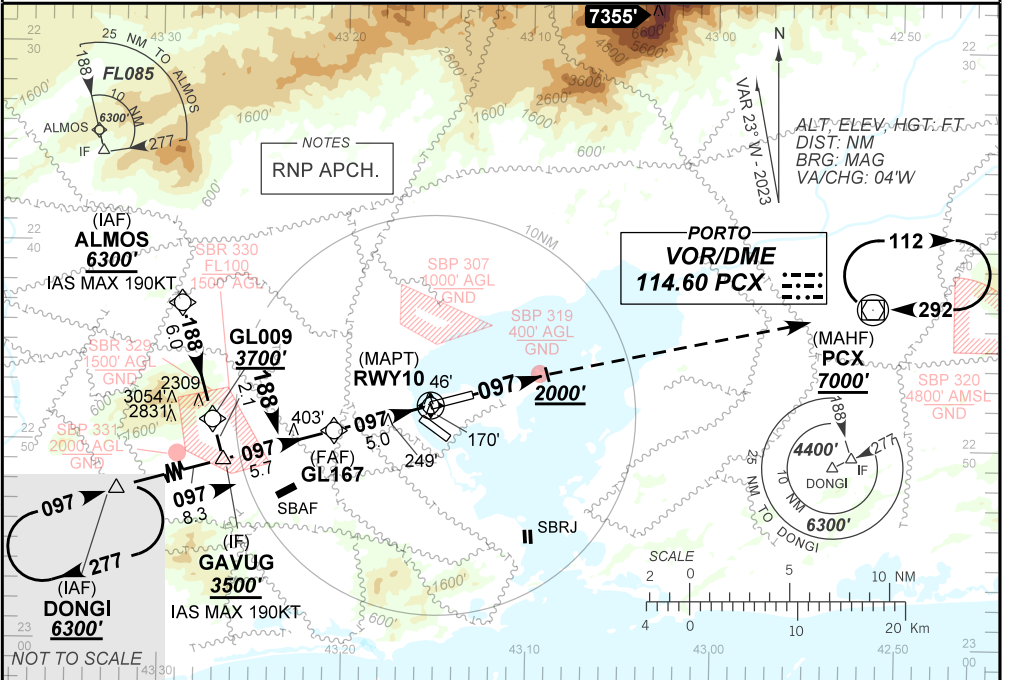
D-ATIS <b>127.60</b>	APP RIO <b>126.20 124.95 125.95 134.95 133.30</b> <b>134.40 121.25 129.80 128.90 119.35</b>	TWR GALEÃO <b>118.00 118.20</b>	GNDC GALEÃO <b>128.35 121.65</b>
-------------------------	---	------------------------------------	-------------------------------------

TEMP LNAV/VNAV <b>MIN 0°C / MAX 48°C</b>	FINAL CRS <b>097°</b>	FAF: <b>1660'</b>	LNAV/VNAV DA / (OCH): <b>371' / (355')</b>	LNAV MDA / (OCH): <b>460' / (450')</b>
---	--------------------------	----------------------	---	---

APCH Perdida: Subir para **7000'**. Manter proa **097** até **2000'**. Após, curvar à DIREITA direto VOR PCX para espera.

Missed APCH: Climb to **7000'**. Maintain heading **097**, until **2000'**. After, turn RIGHT direct PCX VOR for holding.

DEPARTAMENTO DE CONTROLE DO ESPAÇO AÉREO



TO THR 10 (NM)	10.7	8.7	5.0	2.0	1.3	1.0	0.0
	GL167	4.0	3.0	2.0	1.3	RWY10	
	1660	1340	1021	703	460	ALT	
	1644	1324	1005	687	450	(HGT)	
							Ground Speed (KT)
							090 110 130 150 170 190
							FPM
							500 600 700 800 900 NA
							FAF-MAPT
							NIL

STRAIGHT-IN	CAT	A	B	C	D	E
	DA / (OCH)	371' / (355')				NA
LNAV/VNAV	ALS/NO ALS/ RVR ALS (m)	900 / 1600 / 850				
	MDA / (OCH)	460' / (450')				
LNAV	ALS/NO ALS/ RVR ALS (m)	800 / 1600 / 700		1400 / 2100 / 1250		
	MDA / (OCH)	NA				
CIRCLING	VIS (m)	NA				

CHANGES: HDG. MIN OPR. PROC.