

**INSTRUMENT APPROACH  
CHART (IAC)**

**ATALAIA DO NORTE / Estirão do Equador, MIL (SWEE)**

**RNP RWY 24**

**AD ELEV: 281'**

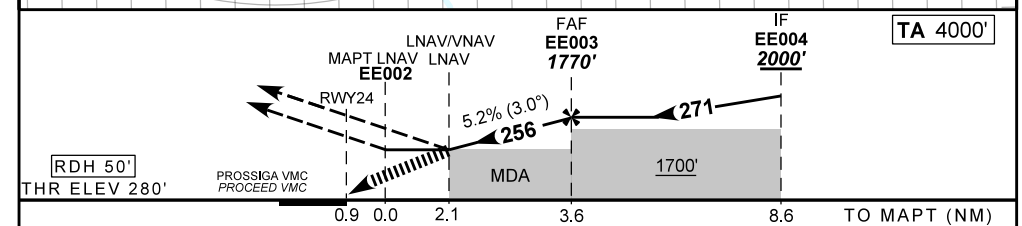
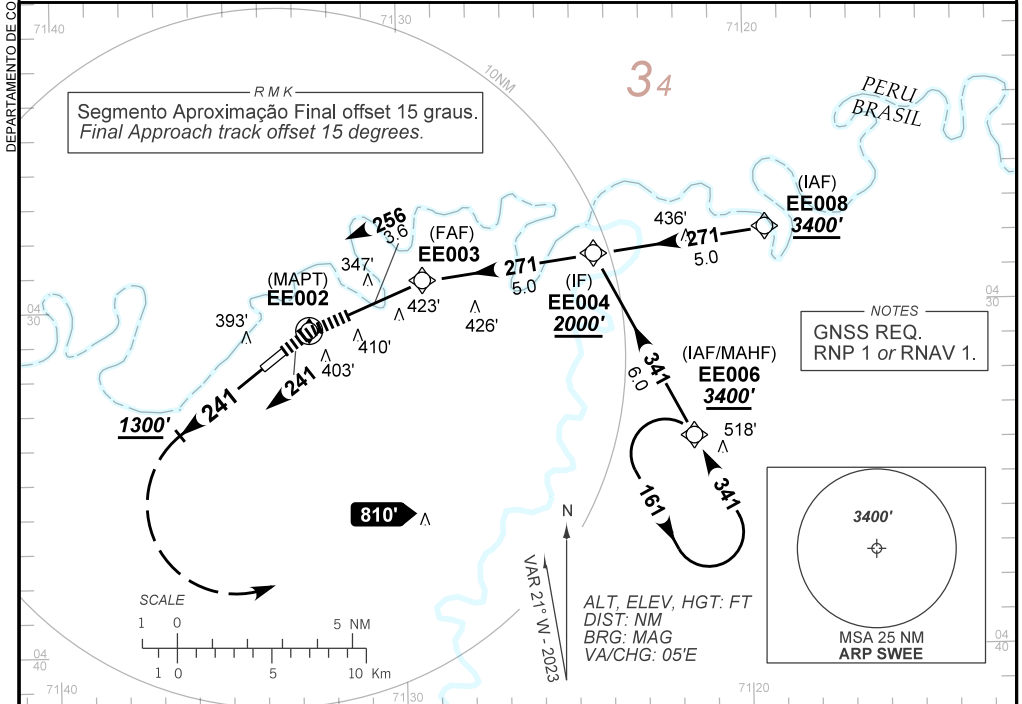
CAT (A, B, C)

ATIS NIL	ERAA NIL	APP NIL	TWR NIL	GNDC NIL
-------------	-------------	------------	------------	-------------

TEMP LNAV/VNAV <b>MIN -10°C / MAX 50°C</b>	FINAL CRS <b>256°</b>	FAF: <b>1770'</b>	LNAV/VNAV DA / (OCH): <b>1280' / (1000')</b>	LNAV MDA / (OCH): <b>1280' / (1000')</b>
---	--------------------------	----------------------	---	---

APCH Perdida: Subir para **3400'**. Manter proa **241** até **1300'**. Após, curvar à ESQUERDA direto EE006 para espera.

Missed APCH: Climb to **3400'**. Maintain heading **241** until **1300'**. After, turn LEFT direct EE006 for holding.



MAPT	2.1	3.0	EE003						
ALT	1280	1572	1770						
(HGT)	1000	1292	1490						
Ground Speed (KT)	090	110	130	150	170	190			
FPM	500	600	700	800	NA				
FAF-MAPT	NIL								

STRAIGHT-IN	CAT	A	B	C	D	E
	DA / (OCH)	1280' / (1000')				
LNAV/VNAV	ALS/NO ALS/ RVR ALS (m)	NIL / 5000 / NIL			NA	
	MDA / (OCH)	1280' / (1000')				
LNAV	ALS/NO ALS/ RVR ALS (m)	NIL / 5000 / NIL				
	MDA / (OCH)				NA	
CIRCLING	MDA / (OCH)				NA	
	VIS (m)				NA	