

STANDARD DEPARTURE CHART  
INSTRUMENT (SID)

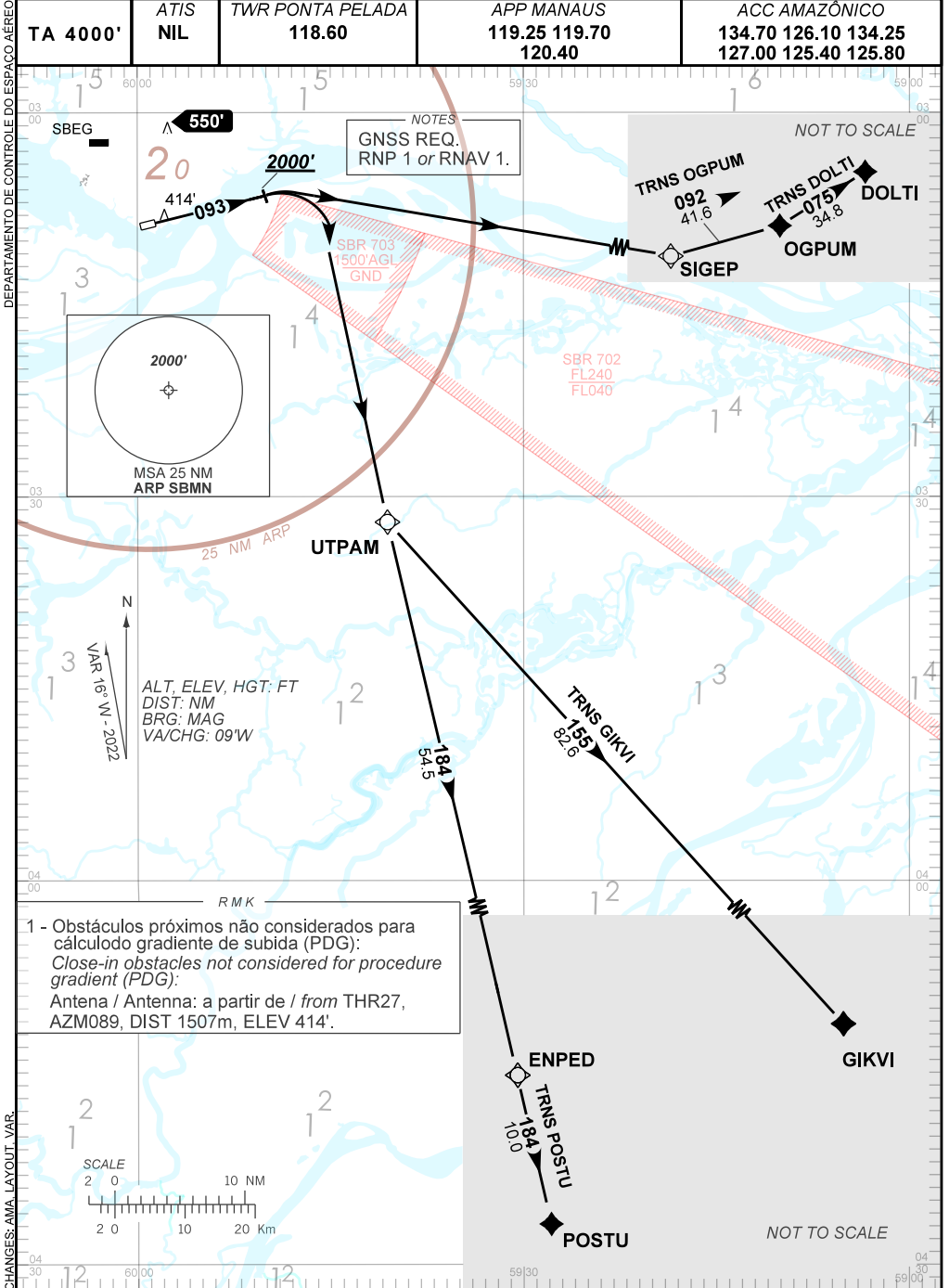
MANAUS / Ponta Pelada, MIL (SBMN)

RWY 09

RNAV SIGEP 1A - UTPAM 1A

AD ELEV: 257'

TA 4000'	ATIS NIL	TWR PONTA PELADA 118.60	APP MANAUS 119.25 119.70 120.40	ACC AMAZÔNICO 134.70 126.10 134.25 127.00 125.40 125.80
----------	----------	----------------------------	---------------------------------------	---



CHANGES: AMA LAYOUT, VAR