

**INSTRUMENT APPROACH  
CHART (IAC)**

**COARI / Urucu (SBUY)**

**RNP RWY 27**

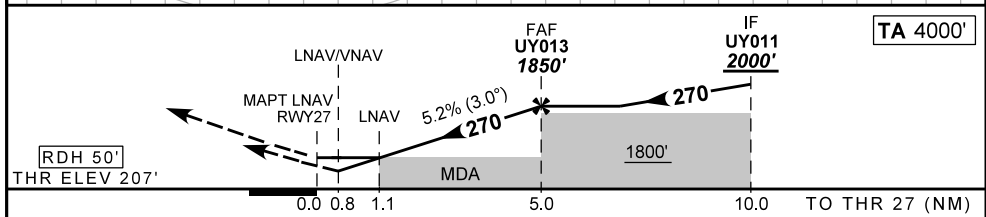
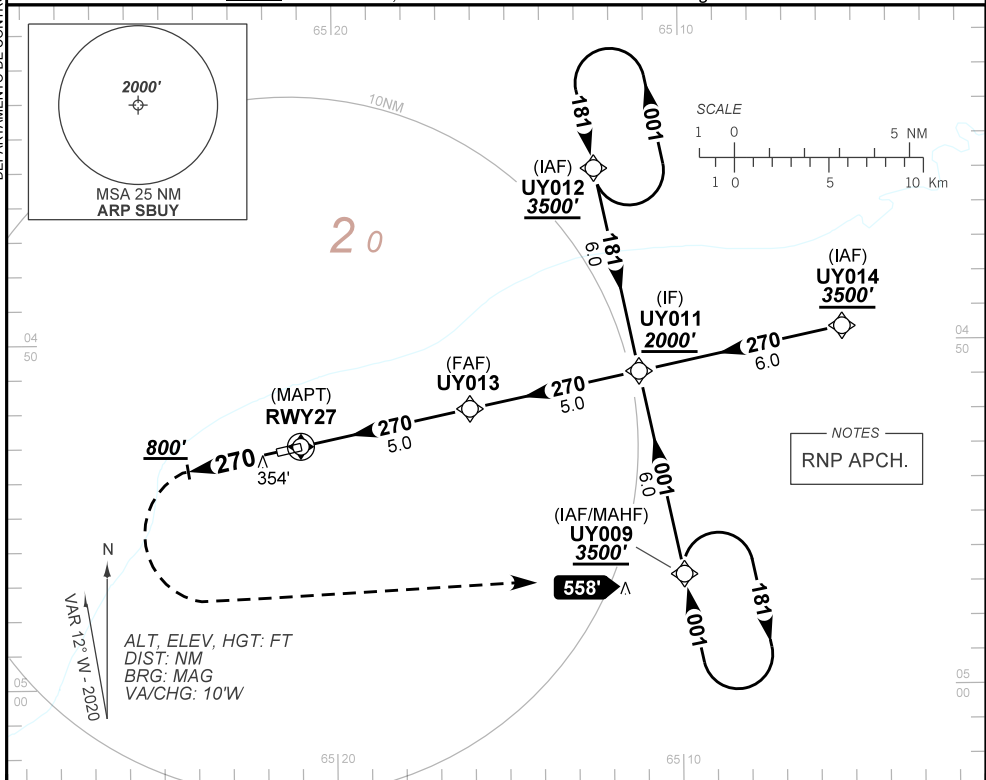
(CAT A, B, C)

**AD ELEV: 210'**

ATIS NIL	APP NIL	AFIS URUCU 131.85	GNDC NIL
TEMP LNAV/VNAV MIN 0°C / MAX 50°C	FINAL CRS 270°	FAF: 1850'	LNAV/VNAV DA / (OCH): 502' / (295')
			LNAV MDA / (OCH): 600' / (390')

APCH Perdida: Subir para **3500'**. Após **800'**, curvar à ESQUERDA direto UY009 para espera.  
Missed APCH: Climb to **3500'**. After **800'**, turn LEFT direct UY009 for holding.

DEPARTAMENTO DE CONTROLE DO ESPAÇO AÉREO



RWY27	1.1	2.0	3.0	4.0	UY013		Ground Speed (KT)	090	110	130	150	170	190
ALT	600	894	1212	1531	1850		FPM	500	600	700	800	NA	
(HGT)	390	687	1005	1324	1643		FAF-MAPT				NA		

STRAIGHT-IN	CAT	A	B	C	D	E
LNAV/VNAV	DA / OCH	502' / (295')			NA	
	ALS/NO ALS/ RVR ALS (m)	NIL / 1400 / NIL				
LNAV	MDA / OCH	600' / (390')			NA	
	ALS/NO ALS/RVR ALS (m)	NIL / 1600 / NIL				
CIRCLING	MDA / OCH	NA				
	VIS (m)	NA				

CHANGES: IDENT, LAYOUT.

AIRAC AMDT 2213A1 29 DEC 22

SBUY\_IAC\_00E 1/1  
IAC RNP RWY 27