

**INSTRUMENT APPROACH  
CHART (IAC)**

**DOURADOS / Dourados (SBDO)**

**NDB RWY 24**

CAT (A,B,C)

**AD ELEV: 1500'**

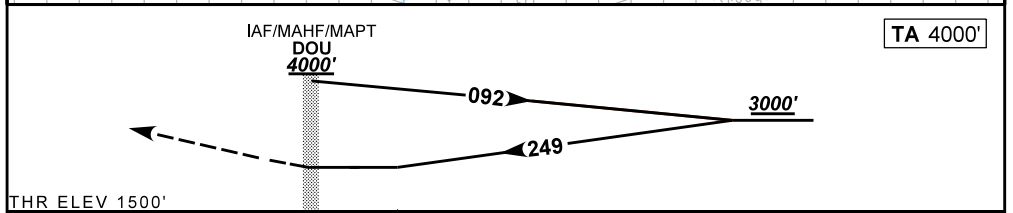
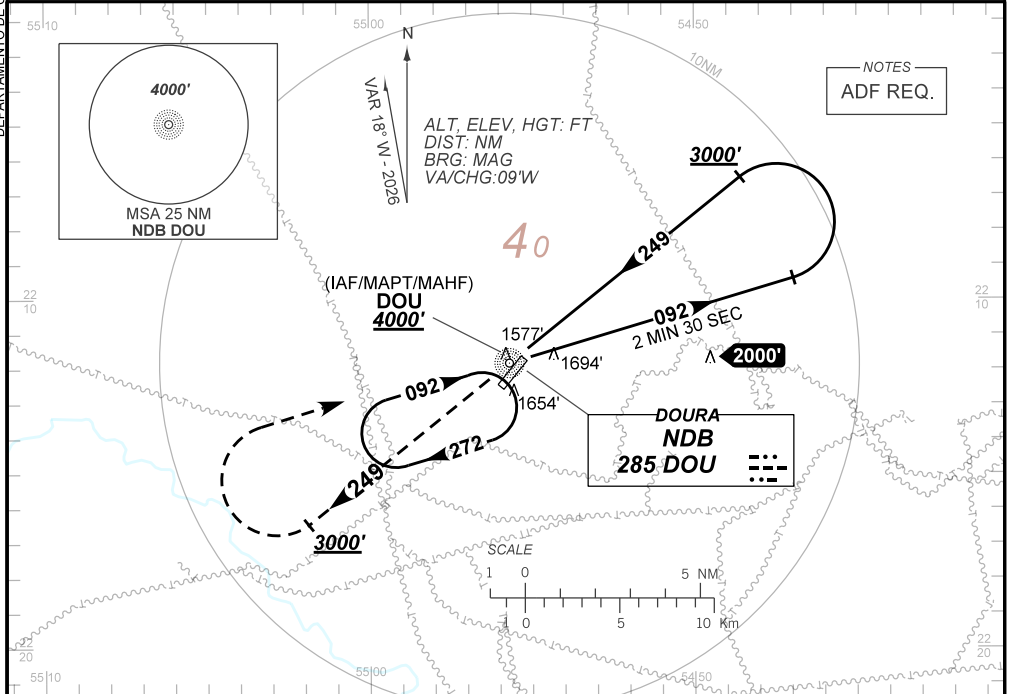
ATIS <b>NIL</b>	APP <b>NIL</b>	AFIS DOURADOS <b>130.10</b>		GNDC <b>NIL</b>
--------------------	-------------------	--------------------------------	--	--------------------

NDB DOU <b>285 KHz</b>	FINAL CRS <b>249°</b>	<b>N/A</b>	<b>N/A</b>	NDB MDA / (OCH): <b>1990' / (490')</b>
---------------------------	--------------------------	------------	------------	---

APCH Perdida: Subir para **4000'**. Manter QDR **249** do NDB DOU até **3000'**. Após, curvar à DIREITA direto NDB DOU para espera.

Missed APCH: Climb to **4000'**. Maintain **249** QDR DOU NDB until **3000'**. After, turn RIGHT direct DOU NDB for holding.

DEPARTAMENTO DE CONTROLE DO ESPAÇO AÉREO



RWY24	<b>NIL</b>	Ground Speed (KT)	090	110	130	150	170	190
ALT	<b>NIL</b>	FPM	650			NA		
(HGT)	<b>NIL</b>	FAF-MAPT	NA					

STRAIGHT-IN		CAT	A	B	C	D	E
NDB	MDA / (OCH)	<b>1990' / (490')</b>					NA
	ALS/NO ALS/ RVR ALS (m)	NIL / 1600 / NIL		NIL / 2300 / NIL			
CIRCLING		MDA / (OCH)	NA				
		VIS (m)					

CHANGES: LAYOUT, OBST. PROC. VAR.