

**INSTRUMENT APPROACH
CHART (IAC)**

NATAL / Campo Augusto Severo, MIL (SBNT)

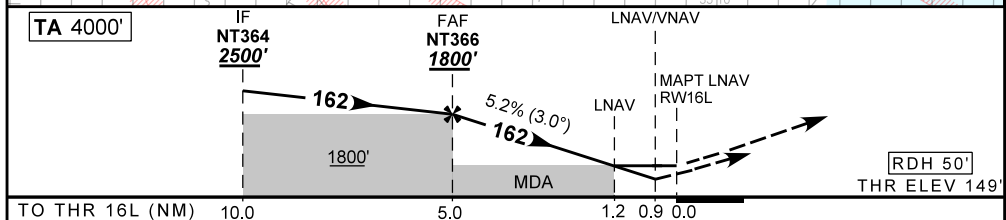
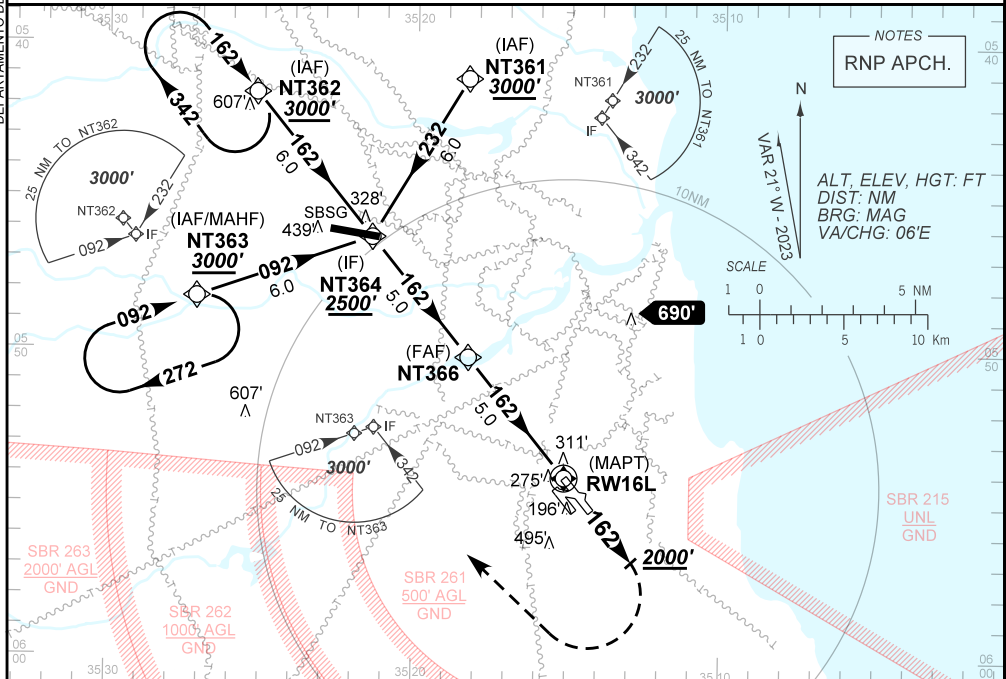
AD ELEV: 169'

RNP RWY 16L

D-ATIS 132.65	APP NATAL 119.30 119.65 120.65 129.80	TWR NATAL 118.70 122.80	GNDC NATAL 121.90
TEMP LNAV/VNAV MIN 0°C / MAX 50°C	FINAL CRS 162°	FAF: 1800'	LNAV/VNAV DA / (OCH): 490' / (341')
		LNAV MDA / (OCH): 560' / (420')	

APCH Perdida: Subir para **3000'**. Manter proa **162** até **2000'** Após, curvar a DIREITA direto NT363 para espera.

Missed APCH: Climb to **3000'**. Maintain heading **162** until **2000'**. After, turn RIGHT direct NT363 for holding.



NT366	4.0	3.0	2.0	1.2	RW16L	Ground Speed (KT)	090	110	130	150	170	190
1800	1473	1154	836	560	ALT	FPM	500	600	700	800	900	1000
1651	1324	1005	687	420	(HGT)	FAF-MAPT	NIL					

STRAIGHT-IN	CAT	A	B	C	D	E
	DA / (OCH)	490' / (341')				NA
LNAV/VNAV	ALS/NO ALS/ RVR ALS (m)	NIL / 1600 / NIL				NA
	MDA / (OCH)	560' / (420')				
LNAV	ALS/NO ALS/ RVR ALS (m)	NIL / 1600 / NIL		NIL / 1900 / NIL		
	MDA / (OCH)	NA				
CIRCLING	MDA / (OCH)	NA				
	VIS (m)	NA				

AIRAC AMDT 2310A2 05 OCT 23

SBNT_IAC_00Q 1/1
IAC RNP RWY 16L

DEPARTAMENTO DE CONTROLE DO ESPAÇO AÉREO

CHANGES: EAC, LAYOUT, MIN, PROC, VAR.