

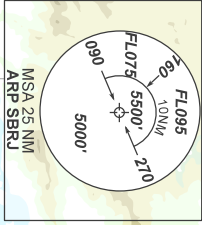
AD ELEV: 10'

TA 7000'	TWR RIO 118.70	APP RIO 134.40 121.25 119.725 132.975 125.60 123.90 121.35 124.70	ACC CURITIBA 124.00 125.35 127.05 128.40 133.40 133.60
----------	-------------------	---	--

DEPARTAMENTO DE CONTROLE DO ESPAÇO AEREO

CHANGES: NEW CHART.

- NOTES:  
GNSS REQ.  
RNP 1 or RNAV 1.
- RMK:
- 1 - Autorizado somente ACFT Cat A, B, C.
  - 2 - Only authorized ACFT Cat A, B, C.
  - 3 - Gradiente MNM de subida:
  - 4 - 3.3% after 5000'. Após, after 3.3%.
  - 5 - Curva à direita compulsória a 600'.
  - 6 - Mandatory turn right at 600'.



VAR 23° W - 2021

ALT. ELEV., HGT., FT  
DIST. NM/  
BRG. MAG  
VA/CHG. 04W

