

**INSTRUMENT APPROACH  
CHART (IAC)**

**PORTO VELHO / Gov. Jorge Teixeira de Oliveira, INTL (SBPV)**

**AD ELEV: 295'**

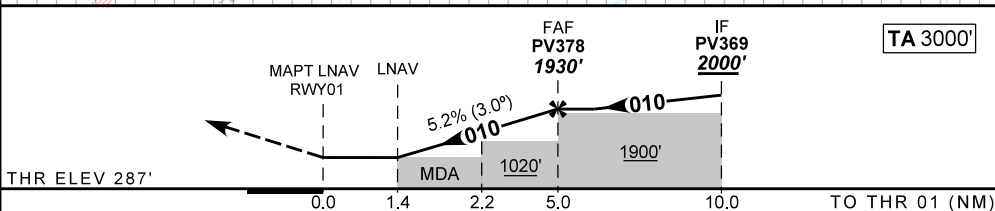
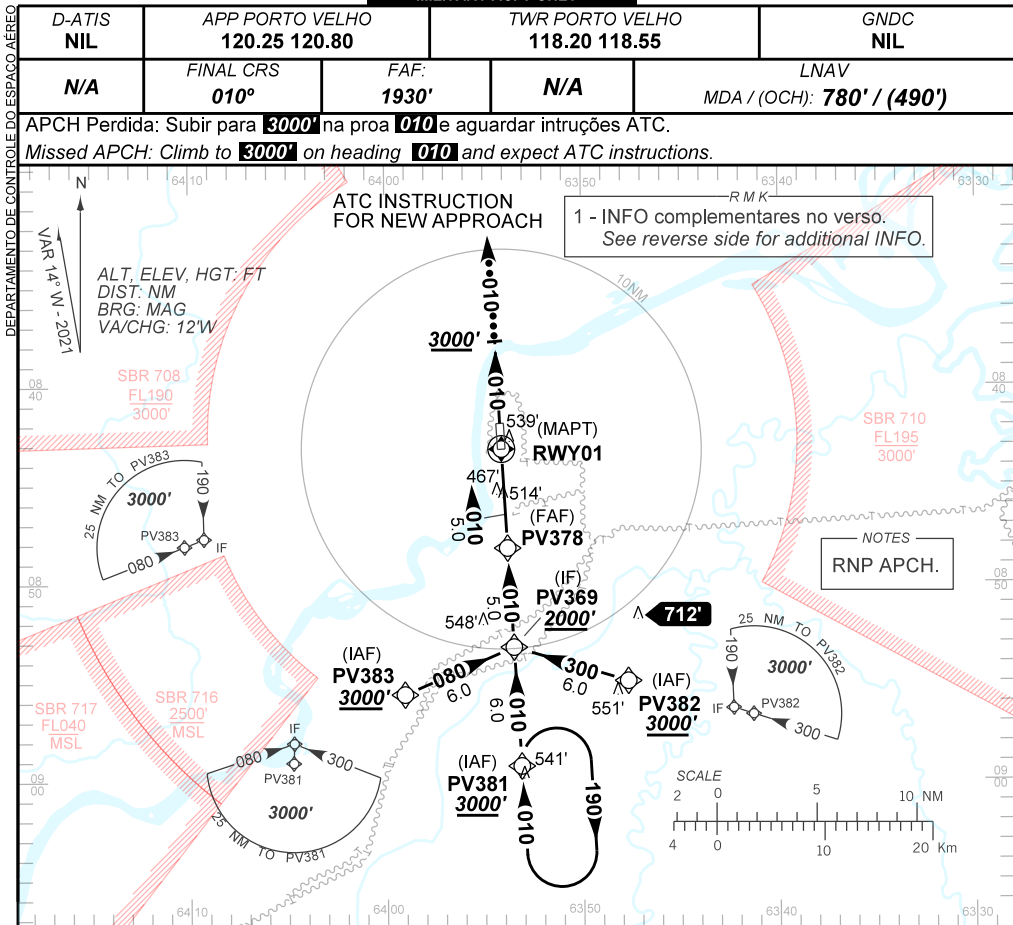
**USE EXCLUSIVO ACFT MILITARES  
MILITARY ACFT ONLY**

**RNP Y RWY 01**

|                      |   |   |   |
|----------------------|---|---|---|
| D-ATIS<br><b>NIL</b> | APP PORTO VELHO<br><b>120.25 120.80</b> | TWR PORTO VELHO<br><b>118.20 118.55</b> | GNDC<br><b>NIL</b>                        |
| N/A                  | FINAL CRS<br><b>010°</b>                | FAF:<br><b>1930'</b>                    | LNAV<br>MDA / (OCH): <b>780' / (490')</b> |

APCH Perdida: Subir para **3000'** na proa **010** e aguardar instruções ATC.

Missed APCH: Climb to **3000'** on heading **010** and expect ATC instructions.



|       |     |      |      |      |       |                   |     |     |     |     |     |      |
|-------|-----|------|------|------|-------|-------------------|-----|-----|-----|-----|-----|------|
| RWY01 | 1.4 | 2.2  | 3.0  | 4.0  | PV378 | Ground Speed (KT) | 090 | 110 | 130 | 150 | 170 | 190  |
| ALT   | 780 | 1037 | 1292 | 1611 | 1930  | FPM               | 500 | 600 | 700 | 800 | 900 | 1000 |
| (HGT) | 490 | 750  | 1005 | 1324 | 1643  | FAF-MAPT          | NA  |     |     |     |     |      |

|             |                         |                  |   |   |   |    |
|-------------|-------------------------|------------------|---|---|---|----|
| STRAIGHT-IN | CAT                     | A                | B | C | D | E  |
| LNAV        | MDA / (OCH)             | 780' / (490')    |   |   |   | NA |
|             | ALS/NO ALS/ RVR ALS (m) | NIL / 1600 / NIL |   |   |   |    |
| CIRCLING    | MDA / (OCH)             | NA               |   |   |   |    |
|             | VIS (m)                 |                  |   |   |   |    |

CHANGES: NEW CHART.

AIRAC AMDT 2109A1 09 SEP 21

**USE EXCLUSIVO ACFT MILITARES / MILITARY ACFT ONLY**

**SBPV\_IAC\_01E 1/2  
IAC RNP Y RWY 01**

DEPARTAMENTO DE CONTROLE DO ESPAÇO AÉREO

RMK

2 - Dados complementares:  
*Complementary data:*

| IDENT | LATITUDE / LONGITUDE    |
|-------|-------------------------|
| PV381 | S 08:59.26 / W 63:53.09 |
| PV382 | S 08:54.96 / W 63:47.70 |
| PV383 | S 08:55.63 / W 63:59.07 |
| PV369 | S 08:53.24 / W 63:53.51 |
| PV378 | S 08:48.22 / W 63:53.81 |
| RWY01 | S 08:43.21 / W 63:54.10 |
| PVH12 | S 08:45.41 / W 63:53.97 |

CHANGES: NEW CHART.